

219AW-15 Mobius Cowl



Suggested yarn:

- Pierrot Yarns Abbey New [100% wool; 66 yds/60m per 1.4 oz./40g skein]; color #03 royal, 3 skeins [120g]
- Pierrot Yarns Yume Cone [100% polyester; 66 yds/60m per 3.5 oz./100g cone]; color #05 fairy purple, 2 cones [120g]

Tools/Notions:

- 6.3mm (approx. US 10½) and 8.0mm (US 11) knitting needles or sizes necessary to achieve gauge

Finished measurements:

- Please see schematics.

Gauge (10cm/4" square):

- English rib stitch: 12 sts and 30 rows
- stockinette stitch: 8 sts and 11 rows

Gauge may vary according to individual knitting style. Change needle size if necessary to achieve gauge. Alternatively, rework pattern with your own gauge measurements.

Summary

Body of cowl: For part A, cast on with long-tail cast-on method. Work in English rib stitch. Bind off in pattern. For part B, cast on with long-tail cast-on method. Work in st st. Bind off.

Finishing: With wrong sides facing each other, seam top and bottom edges together, respectively, with mattress stitch. Turn the cowl one half twist (see finishing schematic), then seam short ends together with mattress stitch.

Abbreviations:

BO = bind off

CO = cast on

k = knit

p = purl

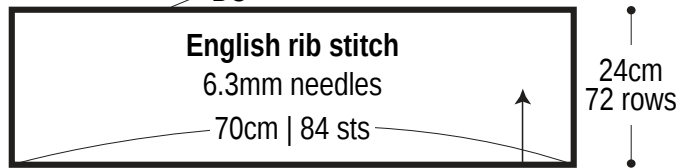
RS = right side

st st = stockinette stitch

Body

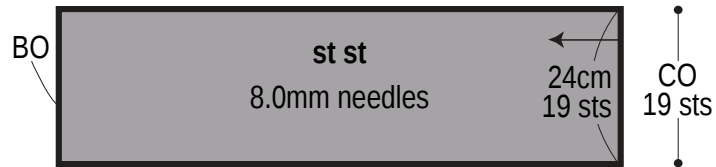
□ = Abbey ■ = Yume Cone

part A



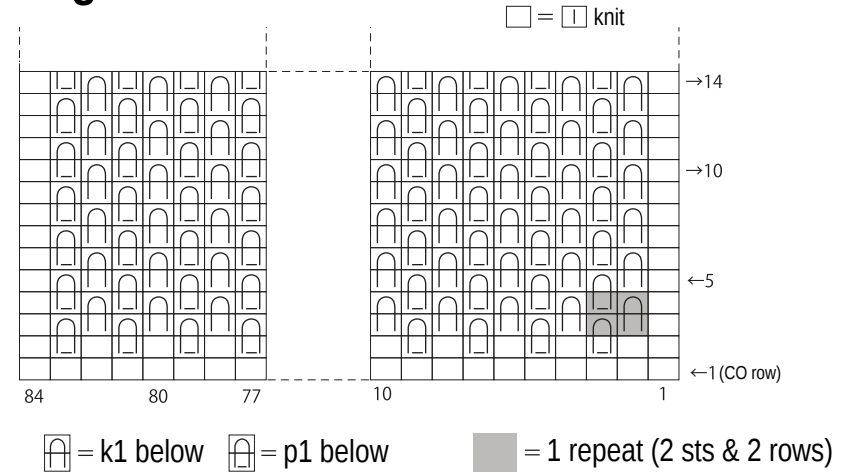
CO 84 sts

part B



70cm | 78 rows

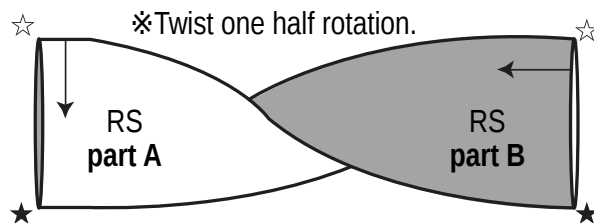
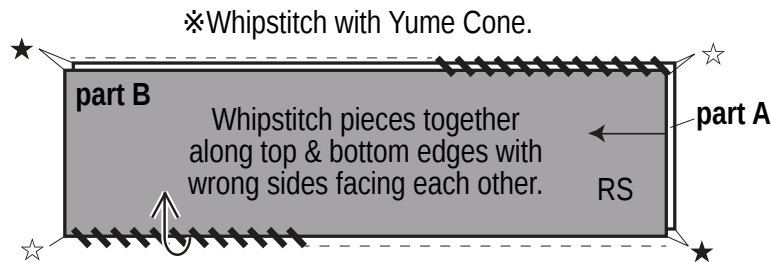
English rib stitch



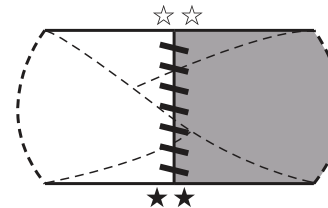
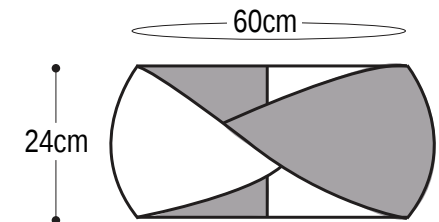
Use QR code on
smartphone to view
a video tutorial on
English rib stitch.



Finishing



Finished item



※Match up the edges marked by ☆ and ★, respectively;
seam short ends together with whipstitch.