

219s-13 Slippers



Suggested yarn:

- Pierrot Yarns Cotton Neat [100% cotton; 58 yds/53m per 1.41 oz./40g skein];
 - version A:
 - color #603 baby blue, 1 skein [35g]
 - color #630 turquoise, 3 skeins [115g]
 - color #701 off-white, 3 skeins [100g]
 - version B:
 - color #613 yellow, 3 skeins [110g]
 - color #632 mint green, 1 skein [20g]
 - color #706 ivy green, 3 skeins [120g]

Tools/Notions:

- 5.5mm (US I) crochet hook or size necessary to achieve gauge

Finished measurements:

- sole length 25cm/9.8"
- width 11cm/4.3"

Gauge (10cm/4" square):

- sc (US), striped sc (US), pattern stitches A & B: 11 sts and 12.5 rows

Gauge may vary according to individual crochet style. Change hook size if necessary to achieve gauge. Alternatively, rework pattern with your own gauge measurements.

Summary

✿**Note 1:** Like all Japanese patterns, stitch counts given here for foundation chains do not include any chain sts needed for turning posts.

✿**Note 2:** Entire item worked with 2 strands of yarn held together.

Bottom: Work foundation chain to begin. Work bottom WS piece in sc and bottom RS piece in pattern stitch A, respectively, increasing and decreasing as indicated. Work 1 round of sc around outer edge of sole. Make second sole in the same manner (with bottom WS piece and bottom RS piece).

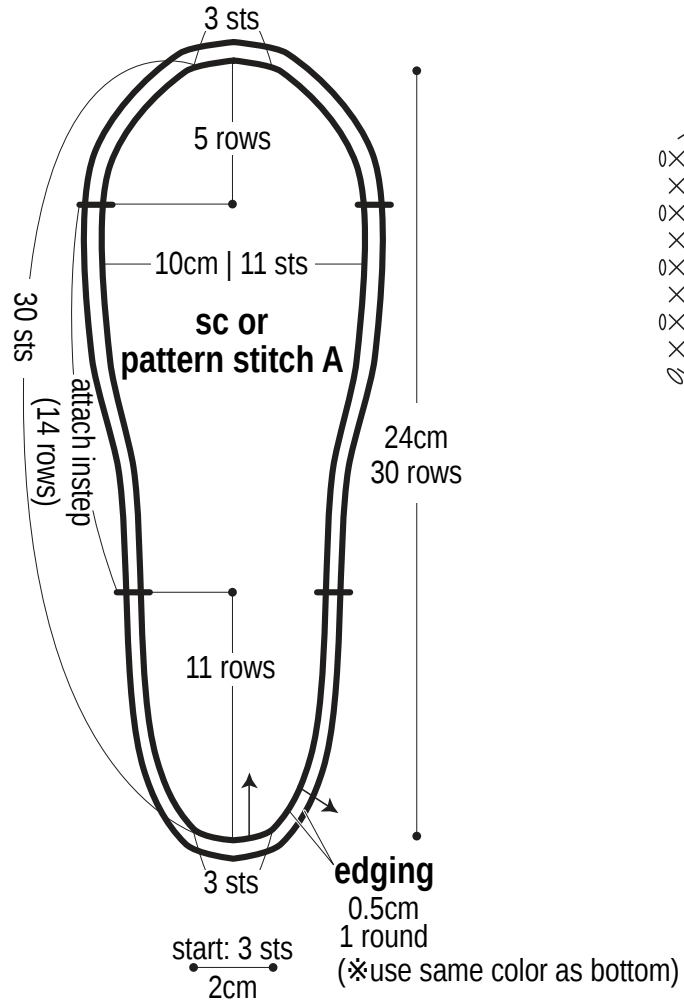
Instep: Work foundation chain to begin. Work instep version A in pattern stitch B or version B in striped sc. Work 1 round of slip stitch around outer edges. Make second piece identical to the first.

Finishing: With wrong sides facing each other, seam bottom WS piece to RS piece. Seam instep piece to sole where indicated in finishing schematic using whipstitch.

Abbreviations:

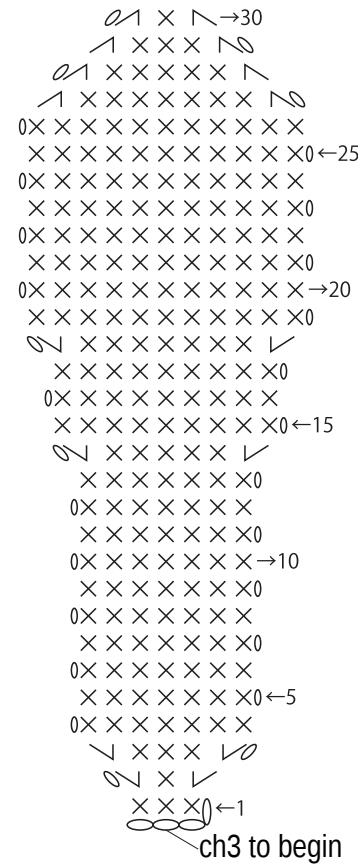
bp = back post ch = chain dc = double crochet (US) RS = right side sc = single crochet (US) WS = wrong side

Bottom (sole) 5.5mm hook
make 2 (each with 1 WS & 1 RS)



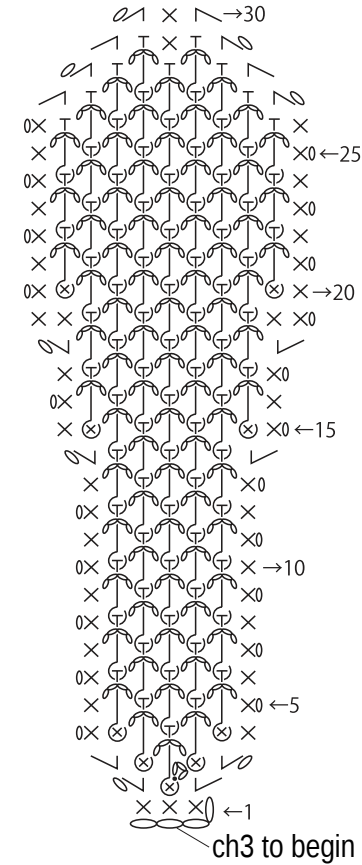
Bottom WS: sc


version A: color #630
version B: color #706



Bottom RS: pattern stitch A

version A: color #701
version B: color #613



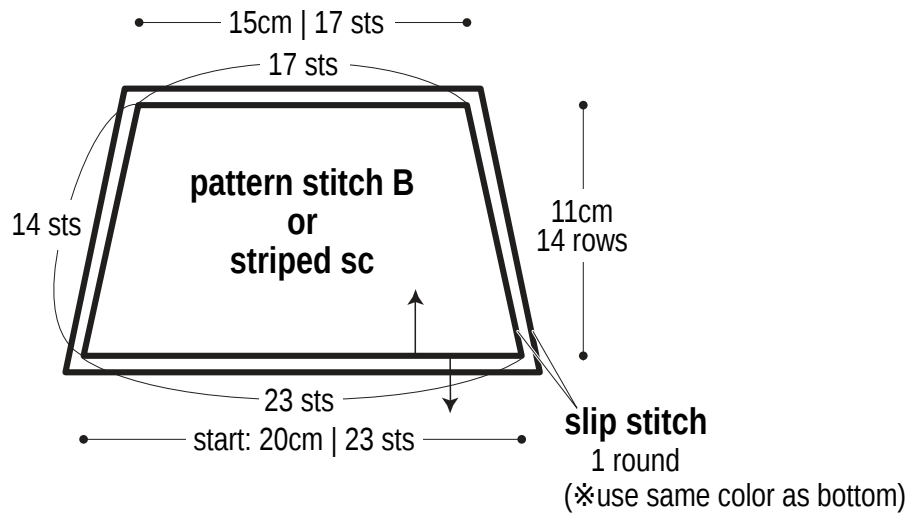
 = bp dc

Use QR code on smartphone to view a video tutorial about how to work bp dc.



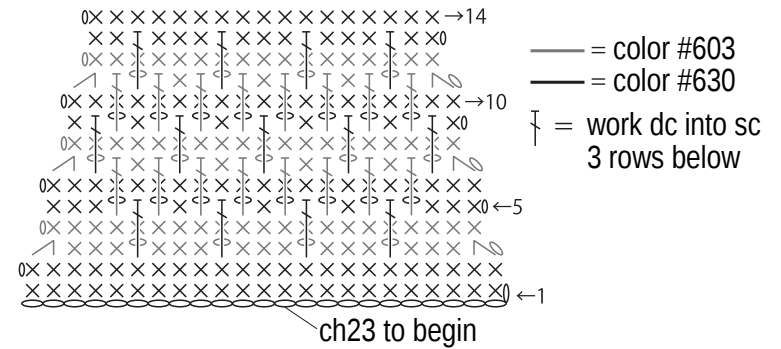
Instep schematic (make 2)

5.5mm hook



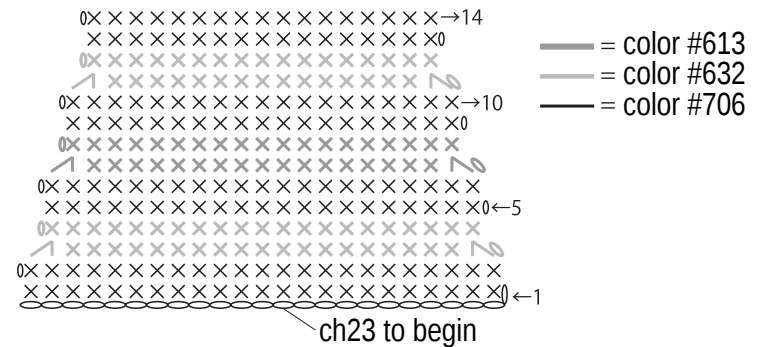
Instep: version A

pattern stitch B

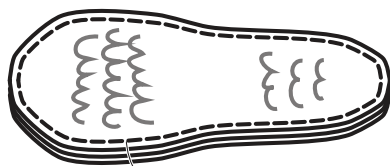


Instep: version B

striped sc



Finishing



With wrong sides facing each other, seam 1 bottom WS piece and 1 bottom RS piece together with yarn in the same color as the bottom.



Whipstitch instep to bottom with same color as the bottom.