

# 218w-06 Poodle Chain Purse



## Suggested yarn:

- Pierrot Yarns Fantastic Magie [45% wool, 30% nylon, 25% silk; 77 yds/70m per 1.06 oz./30g skein]; color #01 ivory, 5 skeins [150g]

## Tools/Notions:

- 4.0mm (US G) crochet hook or size necessary to achieve gauge
- 1 zipper (25cm/9.84" long)
- 1 chain for purse strap (120cm/47.24" long)

## Finished measurements:

- width 28cm/11.02"
- depth 16cm/6.30"
- width of bottom 5cm/1.97"

## Gauge (10cm/4" square):

- pattern stitch: 15 sts and 16.5 rounds

*Gauge may vary according to individual crochet style. Change hook size if necessary to achieve gauge. Alternatively, rework pattern with your own gauge measurements.*

## Summary

✳️**Note 1:** Like all Japanese patterns, stitch counts given here for foundation chains do not include any chain sts needed for turning posts.

✳️**Note 2:** Entire bag worked with 2 strands of yarn held together.

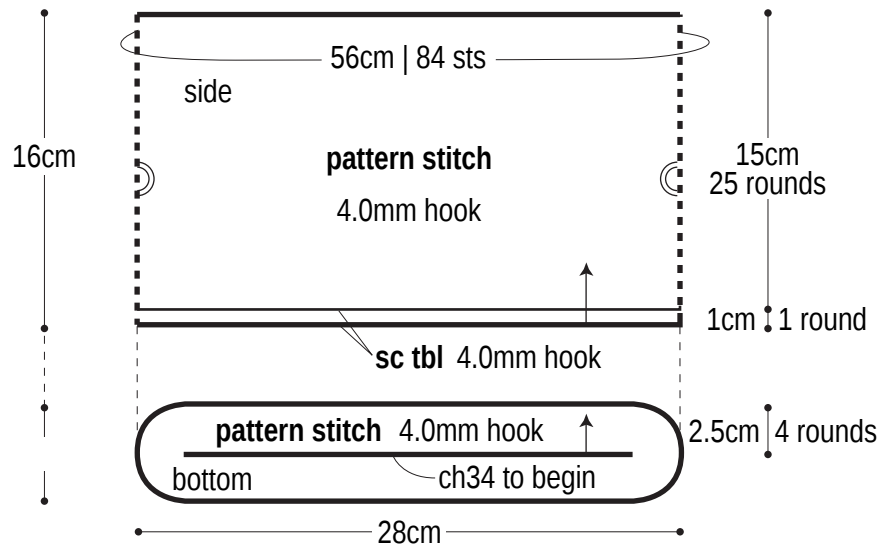
**Body of bag:** Work foundation chain to begin, then work bottom in pattern stitch in the round, increasing as indicated in chart. Continue to sides from bottom, working first round of sides in sc tbl in the round and then working the rest of the sides in pattern stitch in the round.

**Finishing:** Turn right-side out (note that the loop side of the fabric is the right side). Work 1 round of slip stitch around mouth of bag. Sew zipper in place, then attach chain for the purse strap.

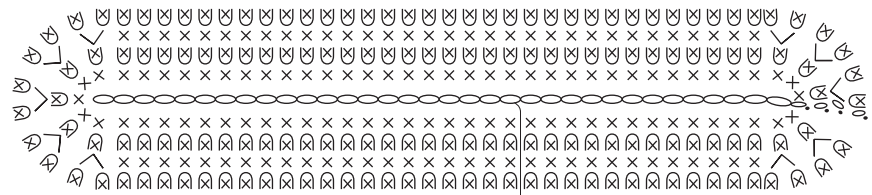
## Abbreviations:

ch = chain      sc = single crochet (US)      tbl = through back loop only

# Bag schematic



# Bottom of bag



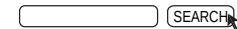
round no.	stitch count
4	84 (work even)
3	84 (+10 sts)
2	74 (work even)
1	74 ch34 to begin

ch34 to begin    ⊗ = loop sc

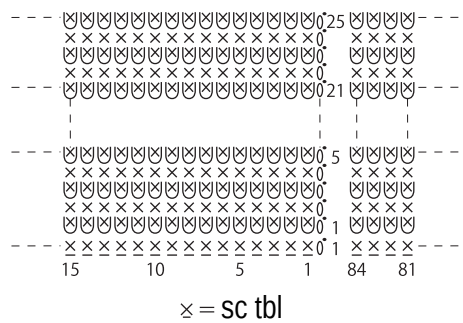
Use QR code on smartphone to view a video tutorial about how to work loop sc.



\*To view on computer, search on the Pierrot Yarns website or YouTube channel instead.



# Side: pattern stitch



# Finishing

