

# 315dbag Drawstring Bag



## Suggested yarn:

- Pierrot Yarns Orgabits One [10% organic cotton, 90% conventional cotton; 142 yds/130m per 1.41 oz./40g skein];
  - color #04 powder blue, 2 skeins [80g]
  - color #05 lavender, 1 skein [40g]

## Tools/Notions:

- 2.5mm (approx. US B or C) crochet hook or size necessary to achieve gauge
- 2 pieces of lace ribbon, each 7mm/0.28" wide by 75cm/29.53" long
- 2 swivel hooks (38mm/1.50" long)

## Finished measurements:

- Please see schematics.

## Gauge (10cm/4" square):

- pattern stitch: 22.5 sts and 17 rounds
- single crochet (US): 22 sts and 26 rounds

*Gauge may vary according to individual crochet style. Change hook size if necessary to achieve gauge. Alternatively, rework pattern with your own gauge measurements.*

## Summary

**Bottom:** Work magic ring to begin, then work sc in the round according to chart & schematic.

**Sides:** Continuing from bottom, work sides in pattern stitch and sc in the round according to chart & schematic.

**Finishing:** Crochet handle, then seam each end to bag on wrong side using woven seam per finishing schematic. Thread lace ribbon through sides of bag as shown. Fasten each end of the shoulder strap to a swivel hook, then clip hooks to bag as shown in finishing schematics.

## Abbreviations:

ch = chain

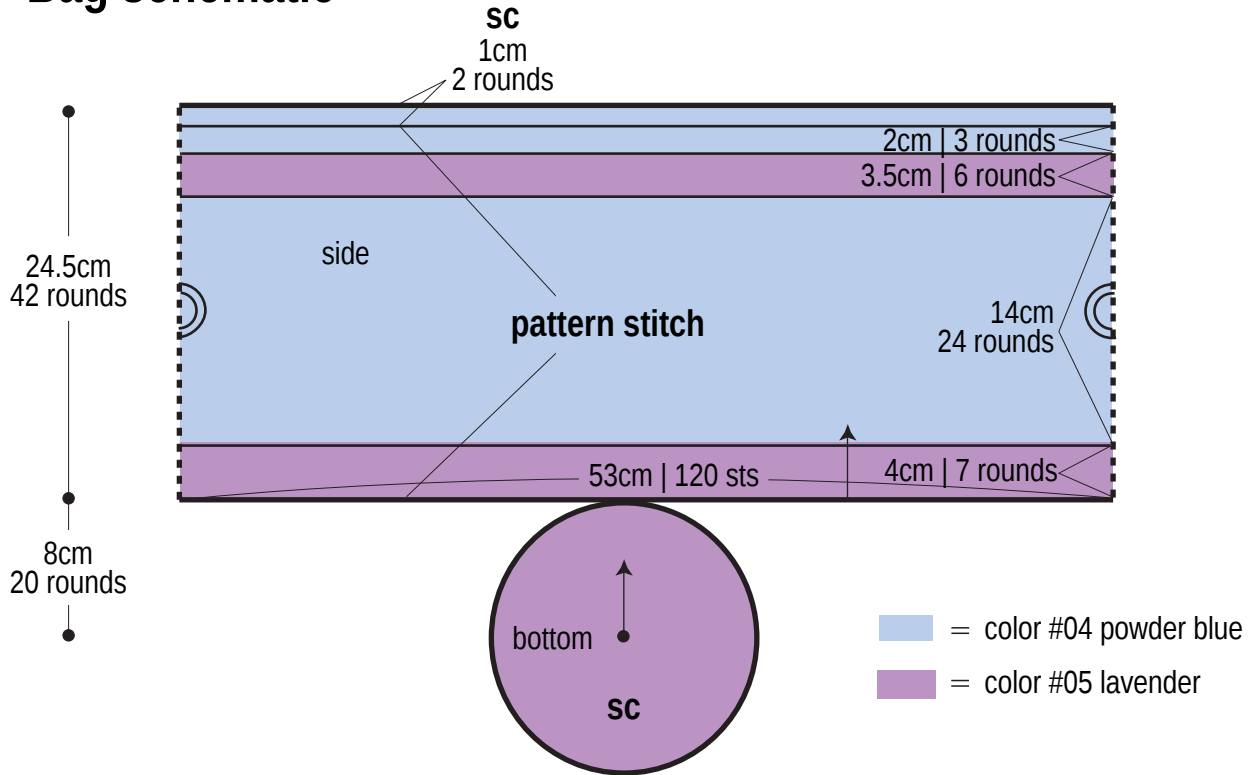
dc = double crochet (US)

fp = front post

m = magic ring/circle

sc = single crochet (US)

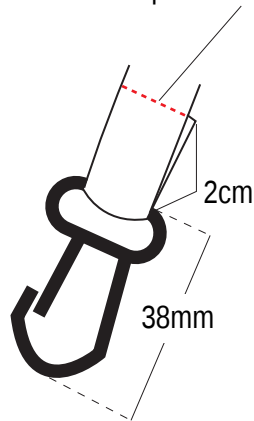
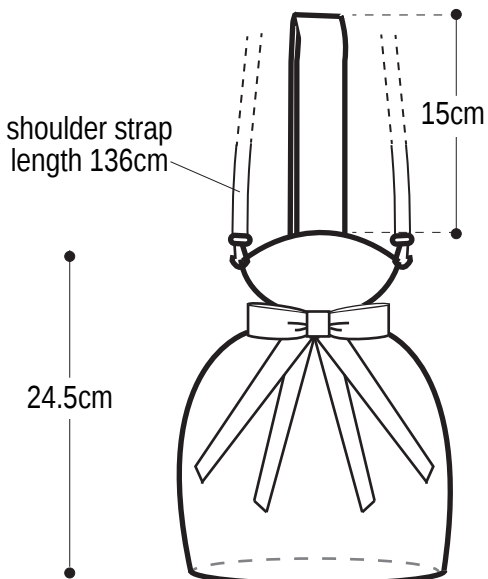
# Bag schematic



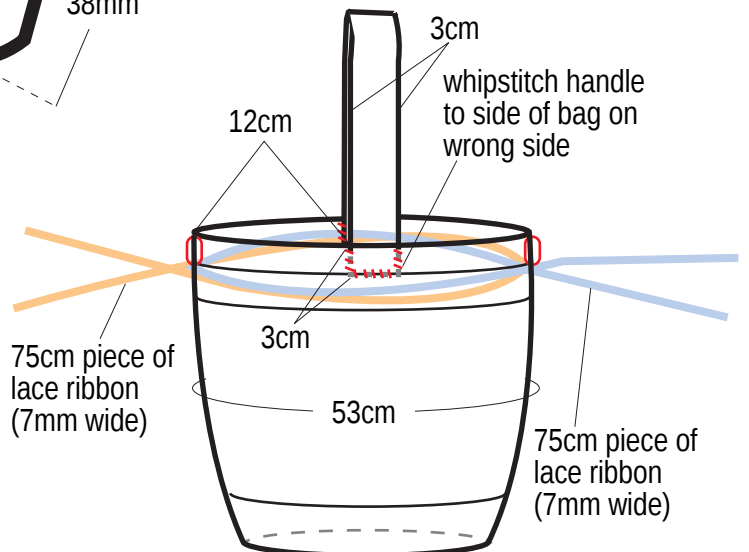
Thread shoulder strap onto swivel hook and secure in place with whipstitch.

## Finishing

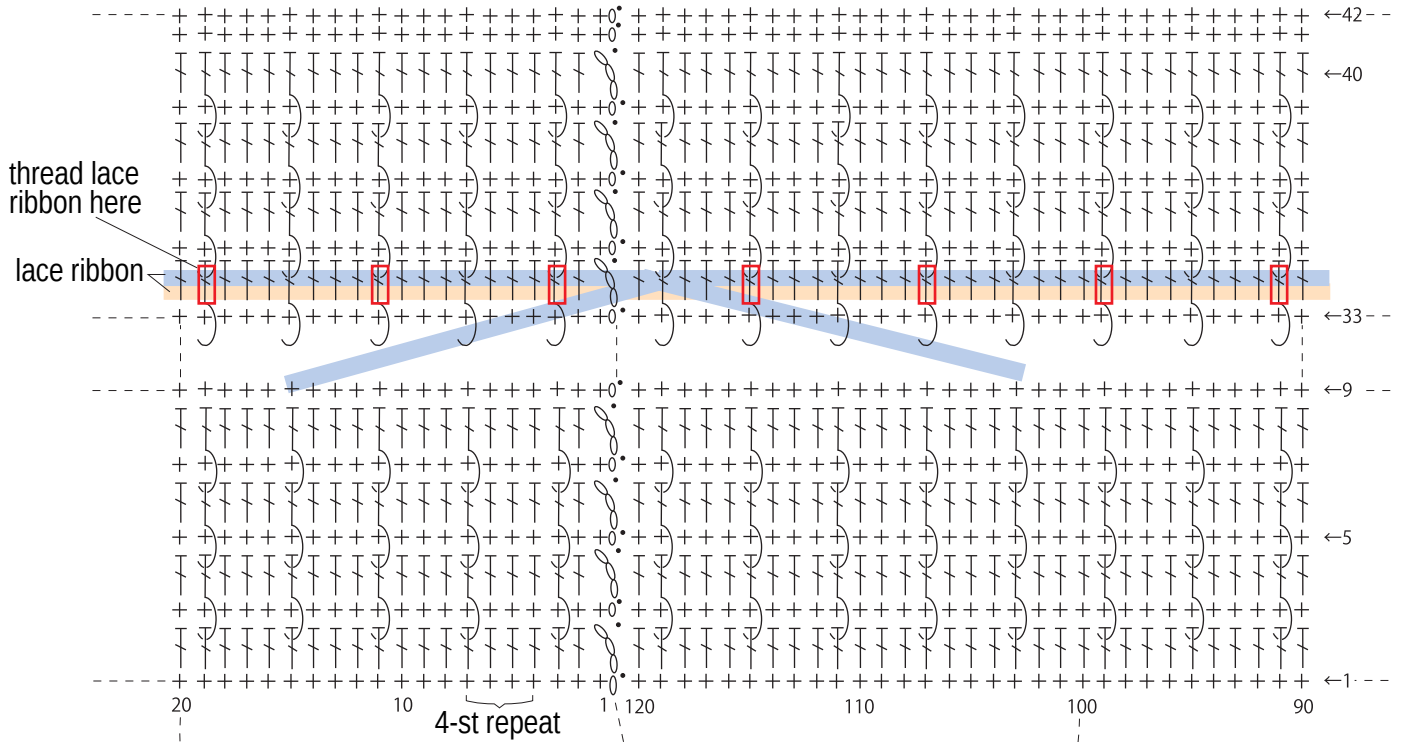
### Finished item



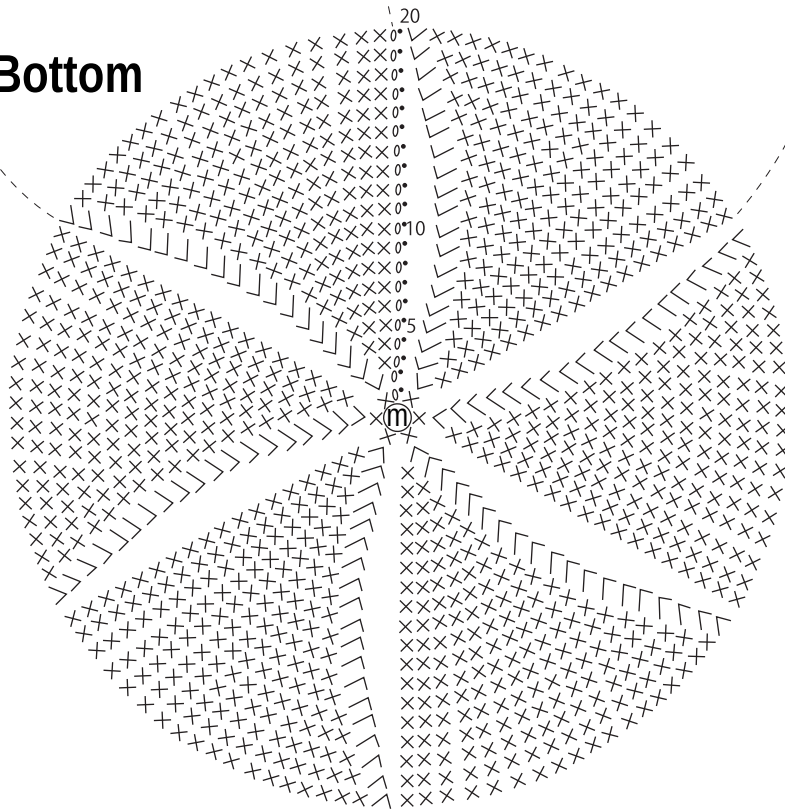
○ = attach shoulder strap here



# Side



# Bottom

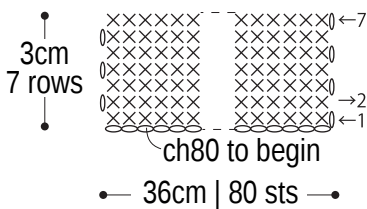


f = fp dc

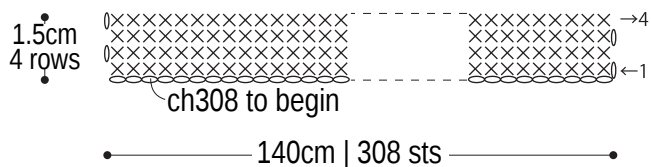
round no.	stitch count
20	120
19	114
18	108
17	102
16	96
15	90
14	84
13	78
12	72
11	66
10	60
9	54
8	48
7	42
6	36
5	30
4	24
3	18
2	12
1	6

+6 sts per round  
(Work into magic ring.)

## Handle color #04



## Shoulder strap color #04



\*Attach each end of shoulder strap to a swivel hook.