

tricot12-3 Atelier Wool Scarf



Suggested yarn:

- Keito-Zakka Stores Atelier Wool [50% punta wool, 50% other wool; 48 yds/44m per 1.41 oz./40g skein]; color #58 Bright Golden Yellow, 8 skeins [310g]

Tools/Notions:

- 5.0mm (US H) crochet hook or size necessary to achieve gauge
- 6.3mm (approx. US 10½) knitting needles or size necessary to achieve gauge

Finished measurements:

- length 144.5cm/56.89"
- width 17cm/6.69"

Gauge (10cm/4" square):

- pattern stitch: 15 sts and 18.5 rows
- seed stitch: 13 sts and 18 rows

Gauge may vary according to individual knitting style. Change needle size if necessary to achieve gauge. Alternatively, rework pattern with your own gauge measurements.

Summary

Scarf: Cast on with long-tail cast-on method. Work in pattern stitch. Bind off. Cast on again (also with long-tail cast-on method) and work in seed stitch. Bind off.

Finishing: Place the two pieces together with wrong sides facing each other (right sides facing out). Seam together by working crochet edging around the outer edges, working through both layers of fabric.

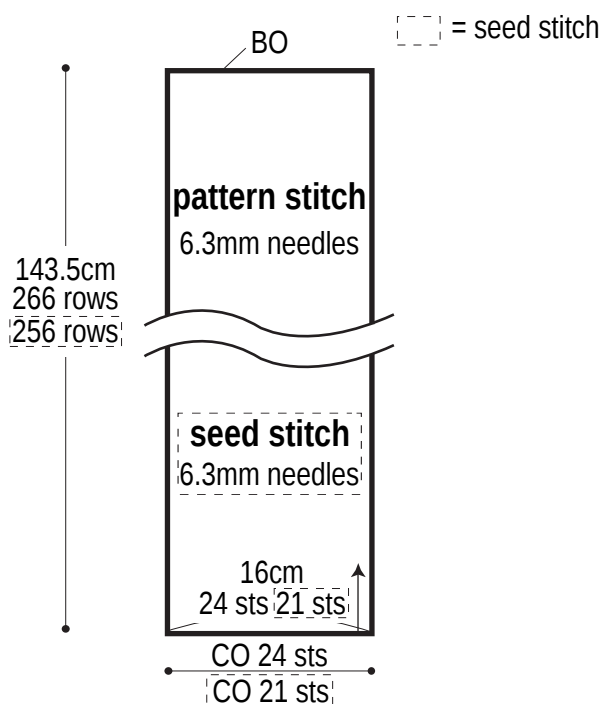
Abbreviations:

BO = bind off

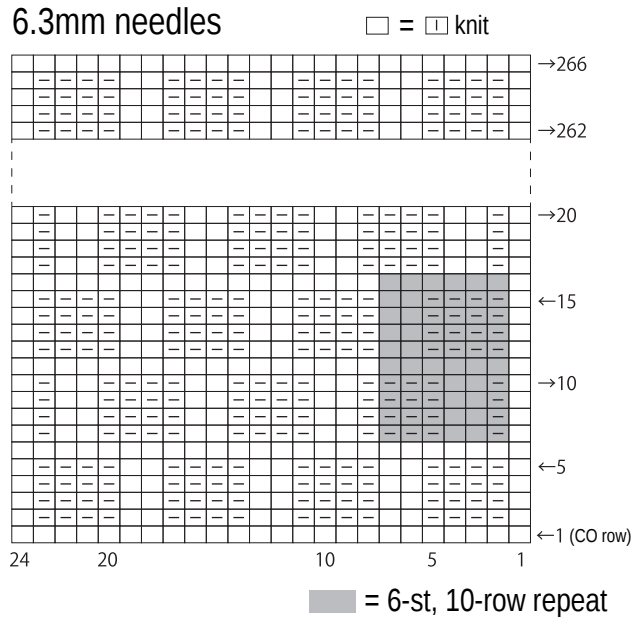
ch = (crochet) chain stitch

CO = cast on

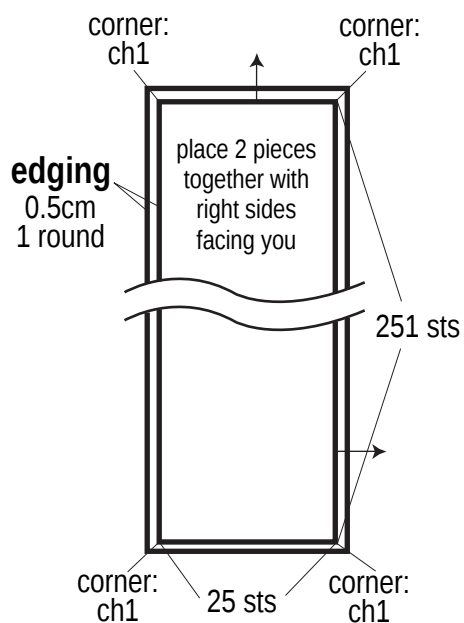
✱ Make 1 each in pattern stitch & seed stitch.



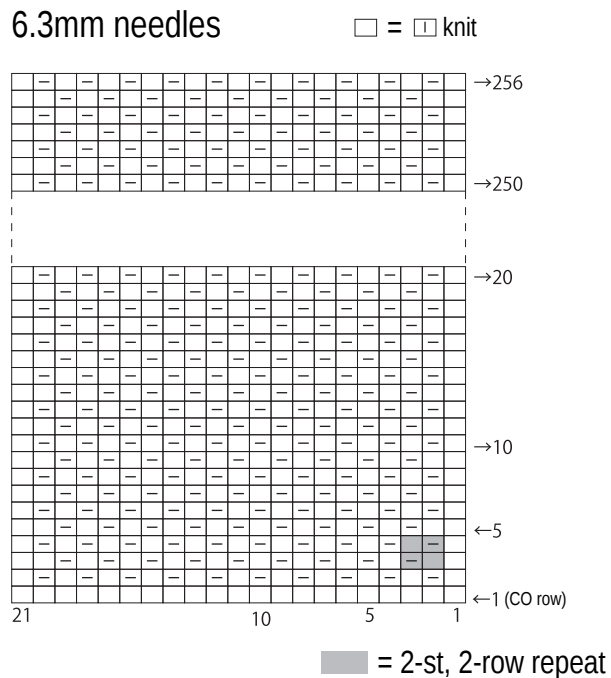
6.3mm needles



Finishing 5.0mm hook



6.3mm needles



Edging 5.0mm hook

