

218s-08 Graceful Linen Shawl



Suggested yarn:

- Pierrot Yarns Graceful Linen [100% linen; 828 yds/757m per 3.53 oz./100g cone]; color #04 Antique Green, 4 cones [355g]

Tools/Notions:

- 2.3mm (approx. US B) crochet hook or size necessary to achieve gauge

Finished measurements:

- width 55cm/21.65"
- length 171cm/67.32"

Gauge (10cm/4" square):

- pattern stitch: 29 sts and 10 rows

Gauge may vary according to individual crochet style. Change hook size if necessary to achieve gauge. Alternatively, rework pattern with your own gauge measurements.

Summary

※**Note:** Like all Japanese patterns, stitch counts given here for foundation chains do not include any chain sts needed for turning posts.

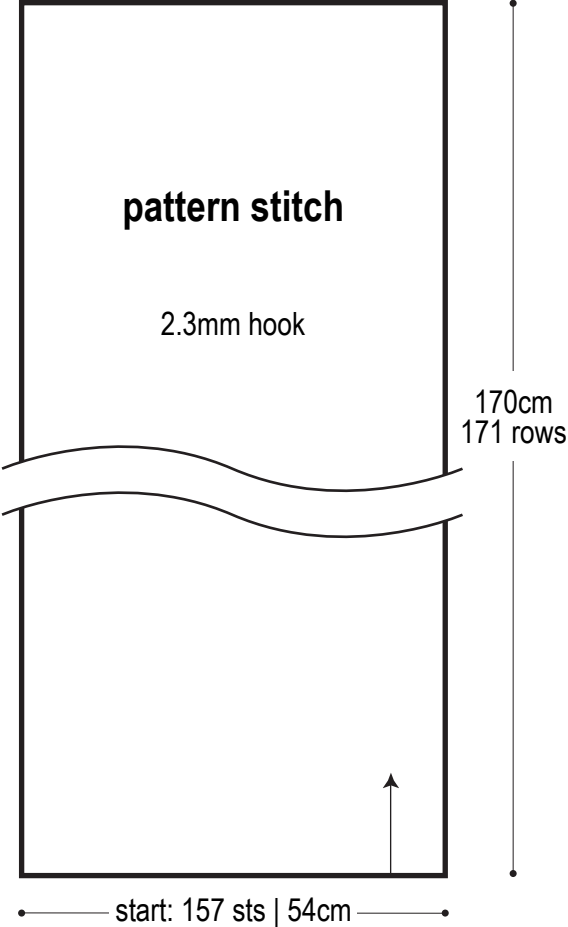
Body of shawl: With 2 strands of yarn held together, work foundation chain to begin, then work shawl in pattern stitch.

Finishing: With 2 strands of yarn held together, work 1 round of sc edging around perimeter of shawl.

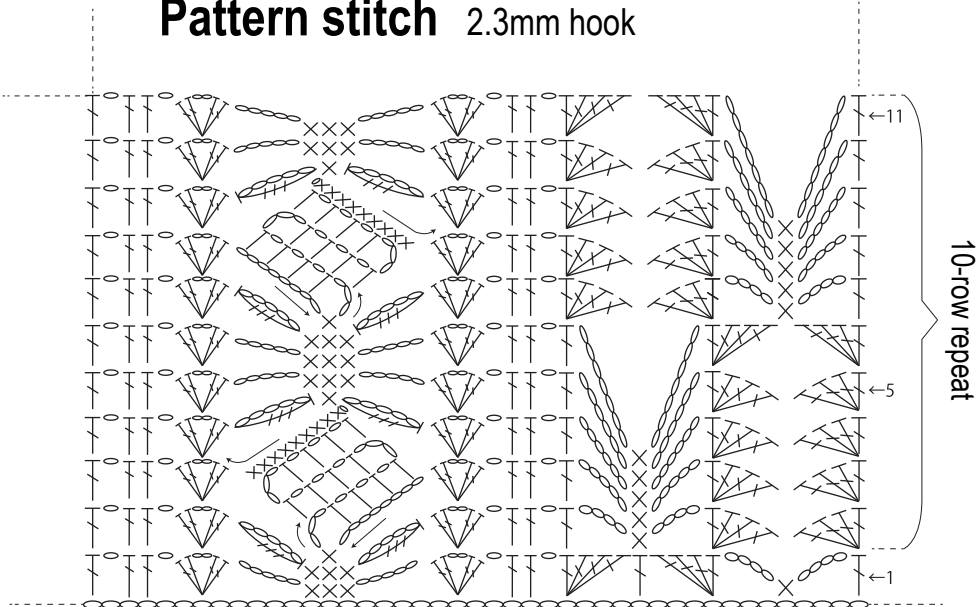
Abbreviations:

ch = chain

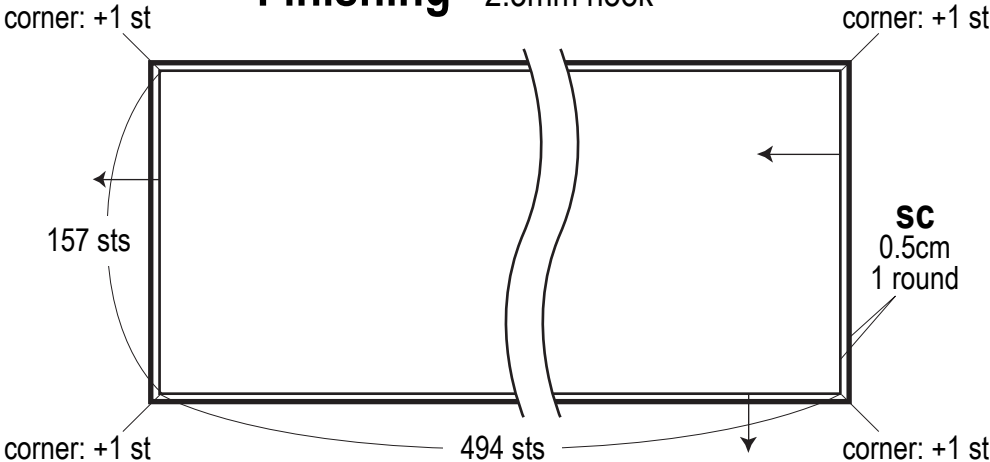
Shawl schematic

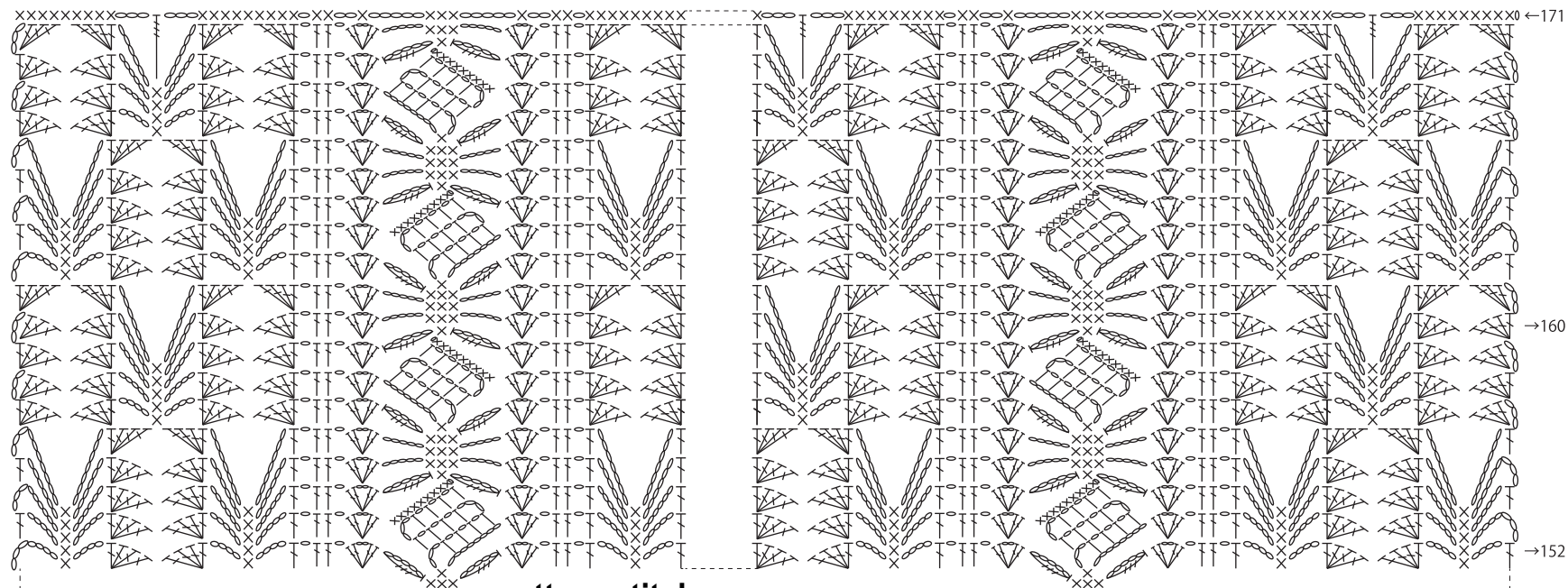


Pattern stitch 2.3mm hook



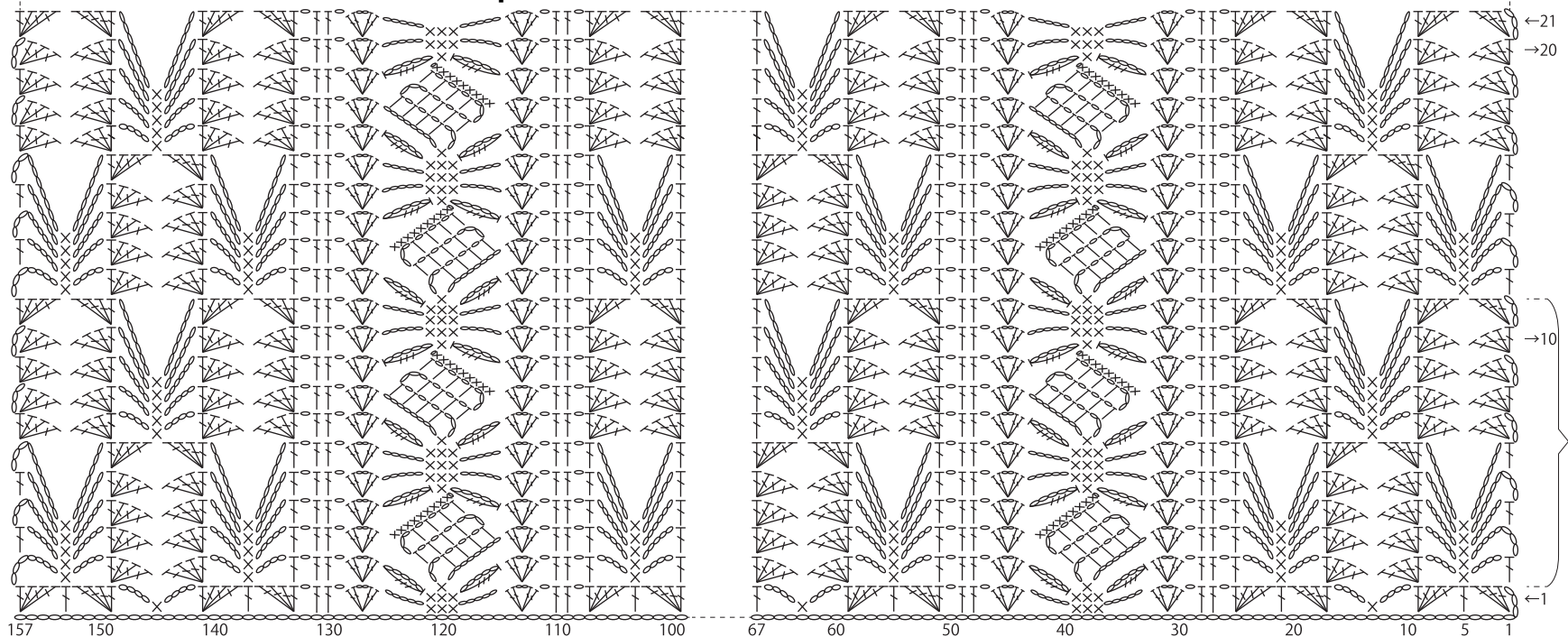
Finishing 2.3mm hook





pattern stitch

2.3mm hook



10-row repeat

※From stitch 67 to stitch 99, repeat this section twice.