

# 1232 Mite Aran Scarf



## Suggested yarn:

- Pierrot Yarns Mite [70% acrylic, 30% eks; 93 yds/85m per 1.41 oz./40g skein];
  - color #09 Grass Green, 5 skeins [200g]

## Tools/Notions:

- 4.5mm (US 7) knitting needles or size necessary to achieve gauge
- cable needle

## Finished measurements:

- width 19cm/7.48"
- length 170cm/66.93"

## Gauge (10cm/4" square):

- pattern stitch A: 30 sts and 25.5 rows
- pattern stitch B: 23 sts and 25.5 rows

*Gauge may vary according to individual knitting style. Change needle size if necessary to achieve gauge. Alternatively, rework pattern with your own gauge measurements.*

## Summary

**Scarf:** Cast on with long-tail cast-on method. Work in pattern stitches A & B. Bind off.

**Finishing:** Block with steam iron on low setting, holding iron approximately 2cm/0.79" above fabric.

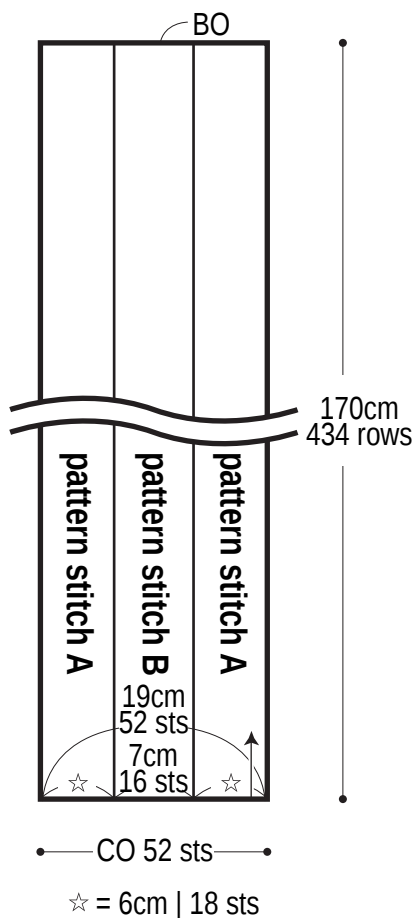
## Abbreviations:

BO = bind off

CO = cast on

# Scarf schematic

4.5mm needles



## pattern stitch A

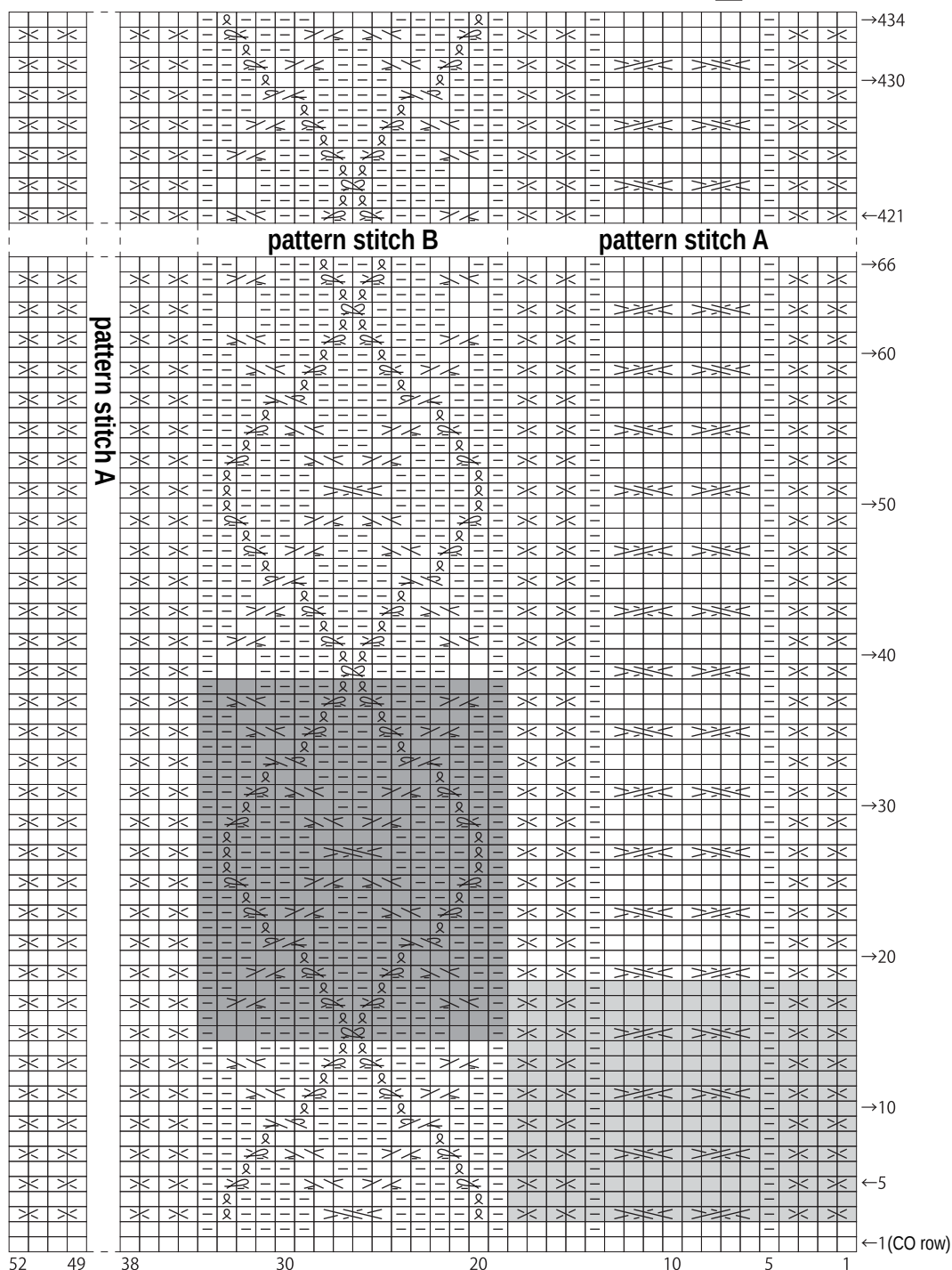
■ = 18-st, 16-row repeat

## pattern stitch B

■ = 16-st, 24-row repeat

# Scarf chart 4.5mm needles

□ = □ knit



⊠ = C2F

⊠ = C2B

⊠ = C4F

⊠ = C4B

⊠ = twisted knit stitch

⊠ = C2F with twisted knit sts

⊠ = C3Fp (slip 2 sts to cable needle and hold in front; p1, k2 from cable needle)

⊠ = C3Bp (slip 1 st to cable needle and hold in back; k2, p1 from cable needle)

⊠ = slip 1 to cable needle and hold in front; p1, work 1 twisted knit st from cable needle

⊠ = slip 1 to cable needle and hold in back; work 1 twisted knit st, p1 from cable needle

⊠ = slip 2 sts to cable needle and hold in front; work 1 twisted knit st, k2 from cable needle

⊠ = slip 2 sts to cable needle and hold in back; k2, work 1 twisted knit st from cable needle