

# tricot12-5 Petit Scarf



## Suggested yarn:

- Keito-Zakka Stores Smooth Silk Wool [80% merino wool, 20% silk; 120 yds/110m per 1.41 oz./40g skein]; color #14 silver gray, 3 skeins [120g]

## Tools/Notions:

- 3.0mm (US 3) and 3.3mm (approx. US 4) knitting needles or sizes necessary to achieve gauge
- cable needle

## Finished measurements:

- length 135.5cm/53.35"
- width 16cm/6.30"

## Gauge (10cm/4" square):

- pattern stitch: 27 sts and 39 rows
- moss stitch: 27 sts and 30 rows

*Gauge may vary according to individual knitting style. Change needle size if necessary to achieve gauge. Alternatively, rework pattern with your own gauge measurements.*

## Summary

**Scarf:** Cast on with long-tail cast-on method. Work in k1p1 ribbing, then in pattern stitch, then in seed stitch, and then in k1p1 ribbing again. Bind off in pattern.

## Abbreviations:

BO = bind off

C6B = slip 3 sts to cable needle and hold in back of work, k3, k3 from cable needle

CFB = slip 3 sts to cable needle and hold in front of work, k3, k3 from cable needle

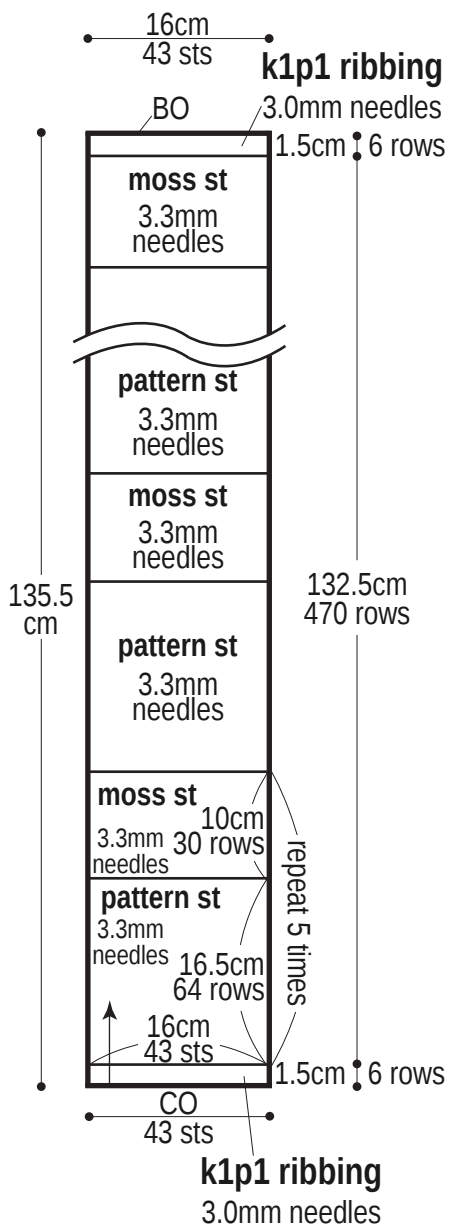
CO = cast on


k = knit

p = purl

YO = yarn over


## Scarf schematic



 = brioche st (from wrong side: YO, k1. On next row, work float and st together)

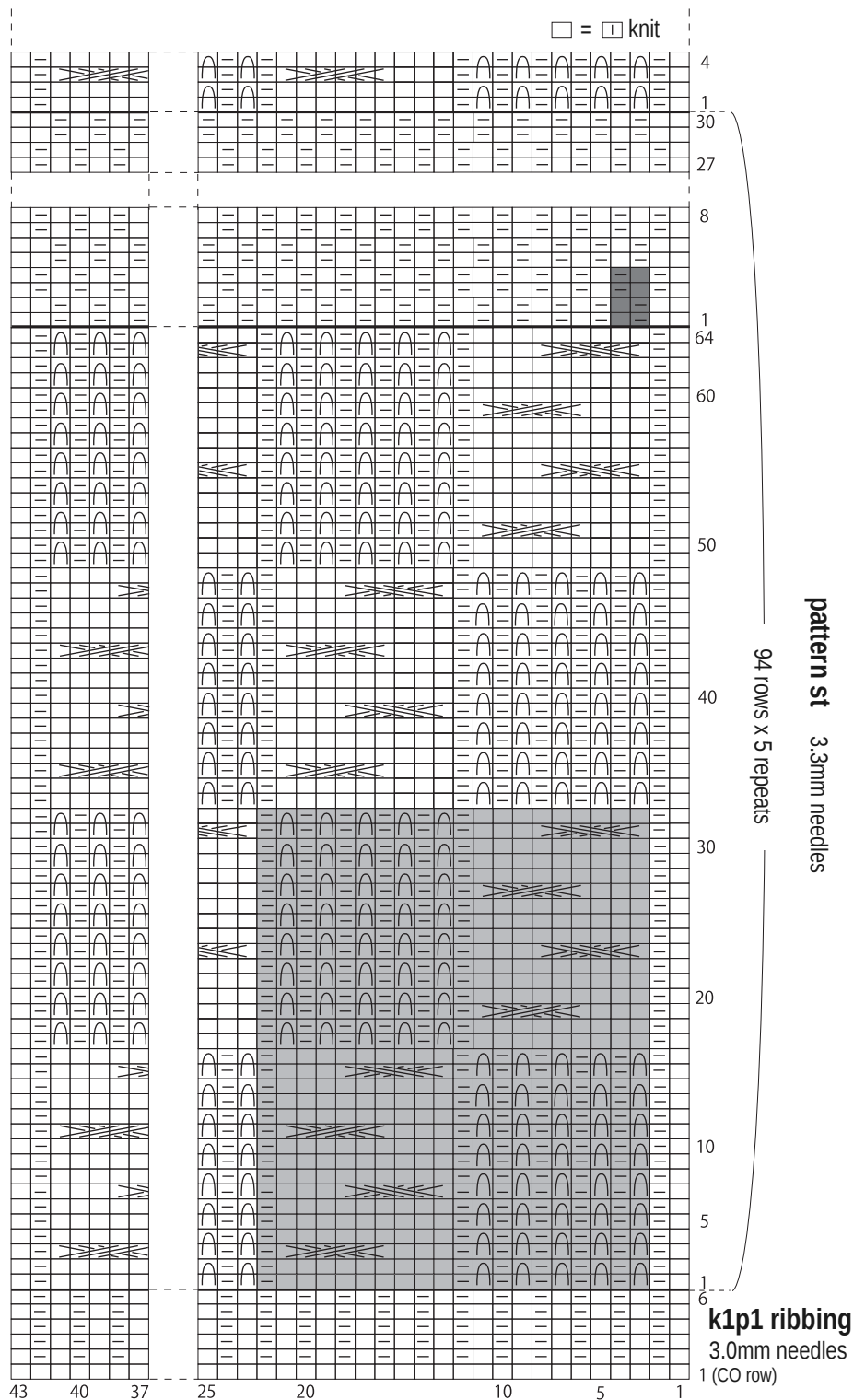
 = C6B

 = C6F

moss stitch  = 2-st, 4-row repeat

pattern stitch  = 20-st, 32-row repeat

## Scarf chart



Use QR code on smartphone to view a video tutorial about how to work brioche stitch (yarn over method).

