

217w-08 Whips Scarf



Suggested yarn:

- Pierrot Yarns Whips [58% acrylic, 30% nylon, 12% wool; 175 yds/160m per 1.41 oz./40g skein];
 - white scarf: color #01 Whips, 5 skeins [185g]
 - pink scarf: color #02 Sweet Flower, 5 skeins [185g]

Tools/Notions:

- 7.0mm (no close US equivalent) crochet hook or size necessary to achieve gauge

Finished measurements:

- width 35cm/34.65"
- length 174cm/19.29"

Gauge (10cm/4" square):

- pattern stitch: 11 sts and 6 rows

Gauge may vary according to individual crochet style. Change hook size if necessary to achieve gauge. Alternatively, rework pattern with your own gauge measurements.



Summary

❖**Note 1:** Like all Japanese patterns, stitch counts given here for foundation chains do not include any chain sts needed for turning posts.

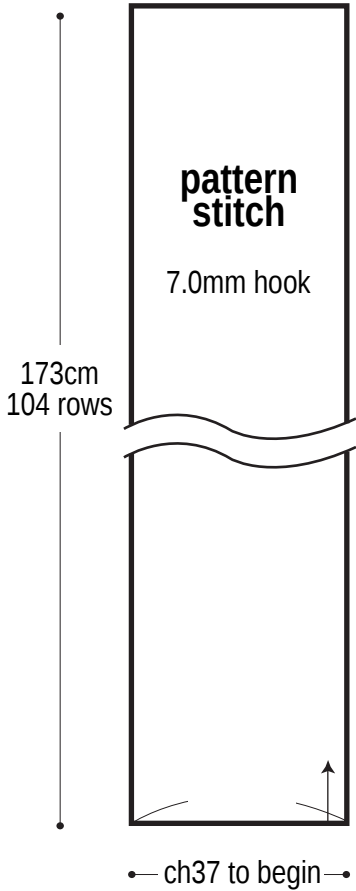
❖**Note 2:** Entire scarf worked with 2 strands of the same color held together.

Scarf: With 2 strands of yarn held together, work foundation chain to begin, then work in pattern stitch. After body of scarf is complete, work 1 round of edging.

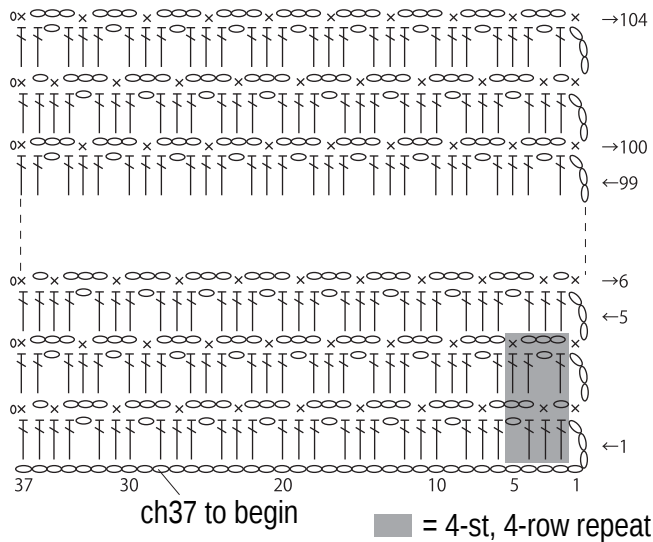
Abbreviations:

ch = chain

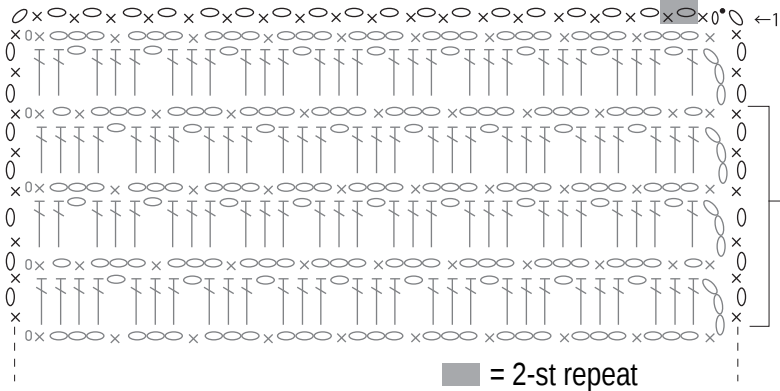
Scarf schematic



Pattern stitch 7.0mm hook



Edging 7.0mm hook



Edging 7.0mm hook

