

1220mf Nuit Scarf



Suggested yarn:

- Pierrot Yarns Nuit [80% merino wool, 20% nylon; 92 yds/84m per 1.41 oz/40g skein];
 - color #07 Monsieur, 4 skeins [155g]

Tools/Notions:

- 4.5mm (US 7) knitting needles or size necessary to achieve gauge
- 3.0mm (approx. US C or D) crochet hook or size necessary to achieve gauge
- cable needle

Finished measurements:

- width 16.5cm/6.50"
- length 158cm/62.20"

Gauge (10cm/4" square):

- pattern stitch: 27 sts and 28 rows

Gauge may vary according to individual knitting style. Change needle size if necessary to achieve gauge. Alternatively, rework pattern with your own gauge measurements.

Summary

Body of scarf: Cast on with long-tail cast-on method. Work in pattern stitch. Bind off.

Finishing: Crochet 1 round of edging around entire outer edge of scarf.

Abbreviations:

BO = bind off

C4B = slip 2 sts to cable needle and hold in back of work, k2, k2 from cable needle

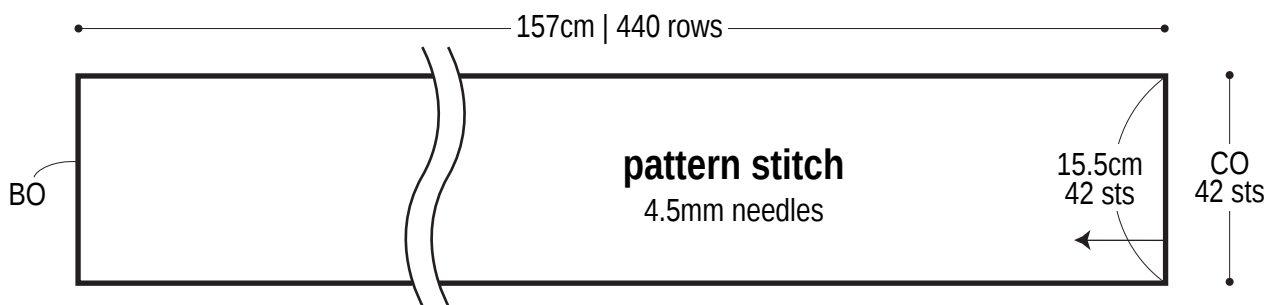
C4F = slip 2 sts to cable needle and hold in front of work, k2, k2 from cable needle

ch = chain st

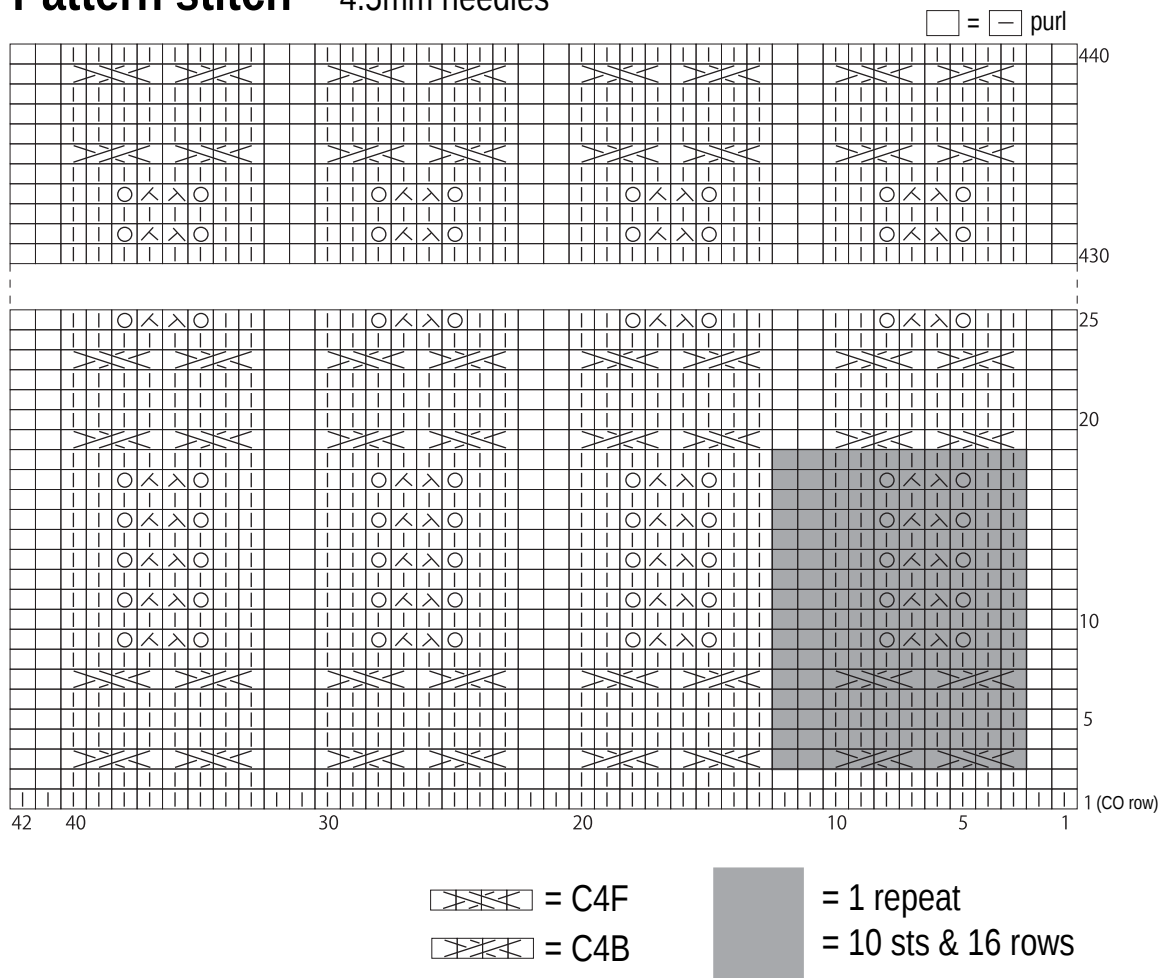
CO = cast on

k = knit

Body of scarf 4.5mm needles



Pattern stitch 4.5mm needles



Edging 3.0mm hook

