

217aw-25 Reversible Clutch



Suggested yarn:

- Pierrot Yarns Soft Merino Bulky [100% merino wool; 44 yds/40m per 1.41 oz./40g skein];
 - color #3 Brown, 2 skeins [50g]
 - color #8 Agate Green, 1 skein [25g]
- Pierrot Yarns Savon [100% nylon; 61 yds/56m per 1.41 oz./40g skein]; color #12 Black, 2 skeins [60g]

Tools/Notions:

- 5.1mm (approx. US 8) and 6.6mm (approx. US 10.5) knitting needles or sizes necessary to achieve gauge
- 5.0mm (US H) crochet hook or size necessary to achieve gauge
- suede cord (1m/39.37")
- 2 duffle buttons (45mm/1.77" long)

Finished measurements:

- flap A width 25cm/9.84"
- flap A height 14cm/5.51"
- flap B width 25cm/9.84"
- flap B height 26cm/10.24"

Gauge (10cm/4" square):

- stranded pattern stitch in Soft Merino Bulky: 14.5 sts and 15.5 rows
- stockinette stitch in Savon: 14.5 sts and 16 rows
- single crochet (US) in Savon: 13 sts and 13 rows

Gauge may vary according to individual knitting style. Change needle size if necessary to achieve gauge. Alternatively, rework pattern with your own gauge measurements.

Summary

Parts A & B (make 2 of each): Cast on with long-tail cast-on method. Work pattern stitch section in Soft Merino Bulky. Work st st section in Savon. Bind off.

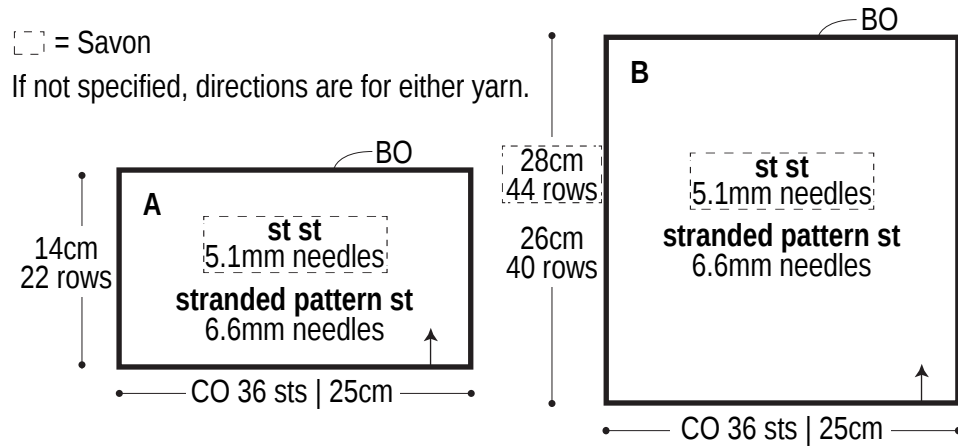
Bottom (make 2): Work foundation chain to begin, then work in sc.

Finishing: Seam each pair of parts together with Savon using whipstitch with right sides facing each other (wrong sides facing out). Seam body to bottom with Savon using whipstitch with right sides facing each other (wrong sides facing out). Fasten buttons to each side of flap. Wrap yarn used to sew buttons on around clutch and tie in a knot.

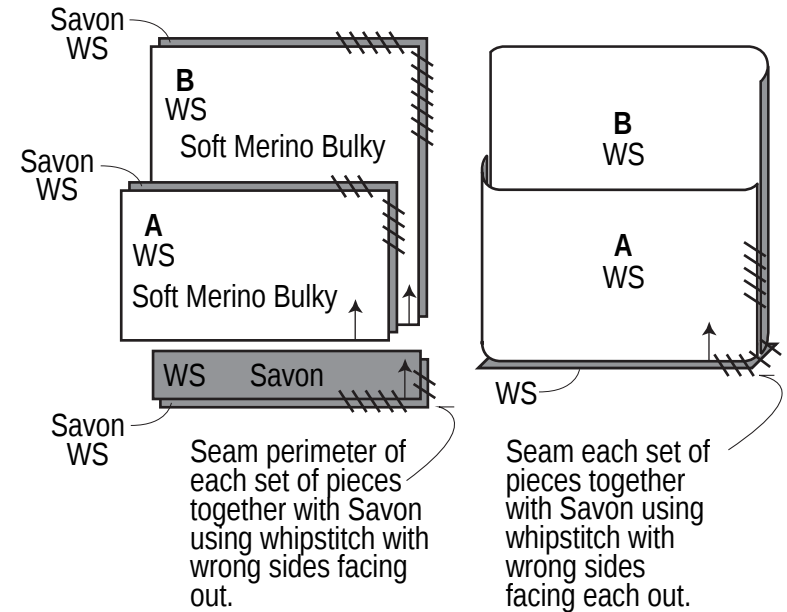
Abbreviations:

BO = bind off ch = chain st CO = cast on sc = single crochet (US) st st = stockinette stitch

Body (make 1 of each)

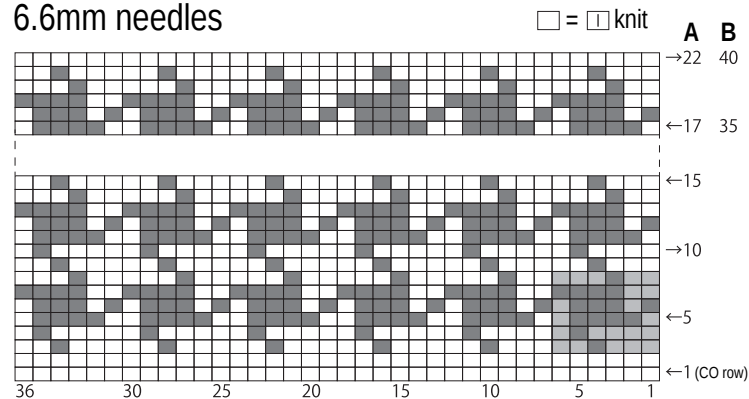


Finishing



Stranded pattern stitch

6.6mm needles



[] = color #3 brown

[] = 6-st, 6-row repeat

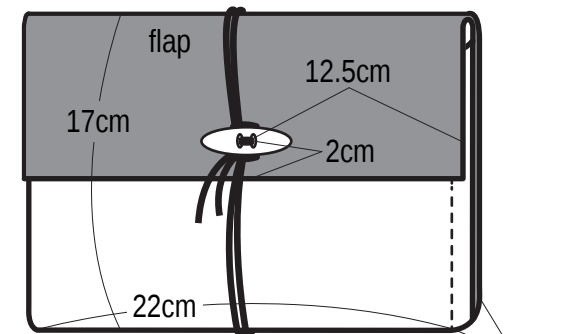
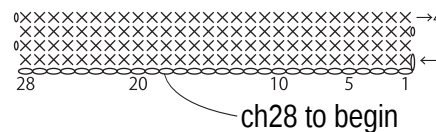
[] = color #8 agate green

Bottom (make 2)

Savon, 5.0mm hook



SC 5.0mm hook



Fasten button to each side with Soft Merino Bulky color #3 brown. Knot yarn used to fasten button on Savon side.