

# 217aw-13 Nordic Vest



## Suggested yarn:

- Pierrot Yarns Rover [100% wool; 61 yds/56m per 1.41 oz./40g skein];
  - color #04 Melange Brown, 1 skein [5g]
  - color #15 Earth Blue, 1 skein [5g]
  - color #16 Red Bean, 1 skein [10g]
- small:
  - color #18 Blue Gray, 6 skeins [60g]
  - color #20 Ecru Beige, 7 skeins [100g]
- large:
  - color #18 Blue Gray, 6 skeins [65g]
  - color #20 Ecru Beige, 7 skeins [120g]

## Tools/Notions:

- 5.4mm (approx. US 9) and 6.0mm (US 10) knitting needles or sizes necessary to achieve gauge

## Finished measurements:

- small:
  - chest 74cm/29.13"
  - cross back width 27.5cm/10.83"
  - back length 43cm/16.93"
- large:
  - chest 78cm/30.71"
  - cross back width 29cm/11.42"
  - back length 48cm/18.90"

## Gauge (10cm/4" square):

- stockinette stitch & stranded pattern stitch: 15 sts and 17 rows
- k1p1 ribbing: 16 sts and 23 rows

*Gauge may vary according to individual knitting style. Change needle size if necessary to achieve gauge. Alternatively, rework pattern with your own gauge measurements.*

## Summary

**Body:** Cast on with long-tail cast-on method. Work k1p1 ribbing, then continue in stranded pattern stitch. To avoid puckering of fabric, take care not to pull the yarn carried across the back of the work tightly.

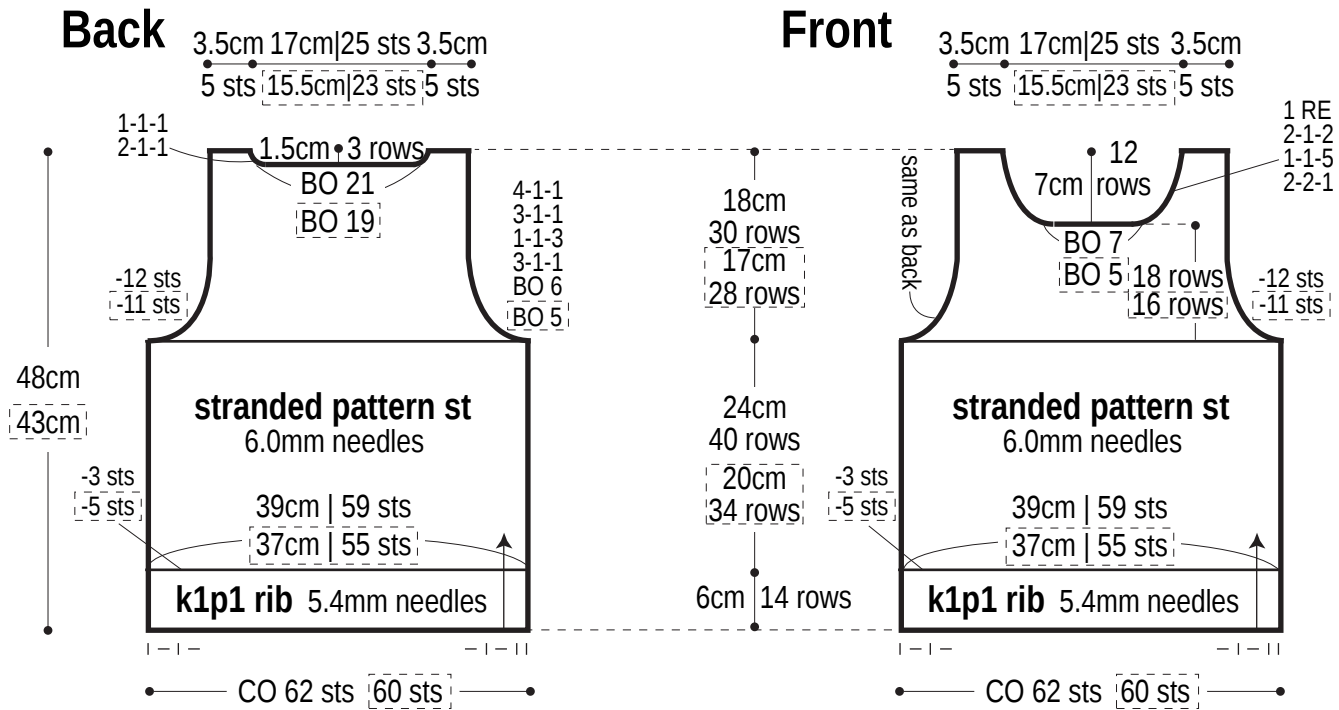
**Finishing:** Seam shoulders with slip stitch seam. Seam sides with mattress stitch. Pick up stitches around neckline and armholes, respectively. Work edging in k1p1 ribbing in the round. Bind off in pattern.

## Abbreviations:

BO = bind off    CO = cast on    k = knit    p = purl    PU = pick up    RE = row(s) even    #-#-# = rows-stitches-times

[ ] = small size

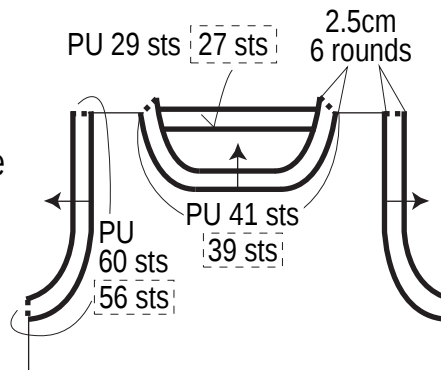
※If only one set of numbers is provided, it refers to both sizes.



※Work all k1p1 ribbing with color #20 ecru beige.

## Finishing

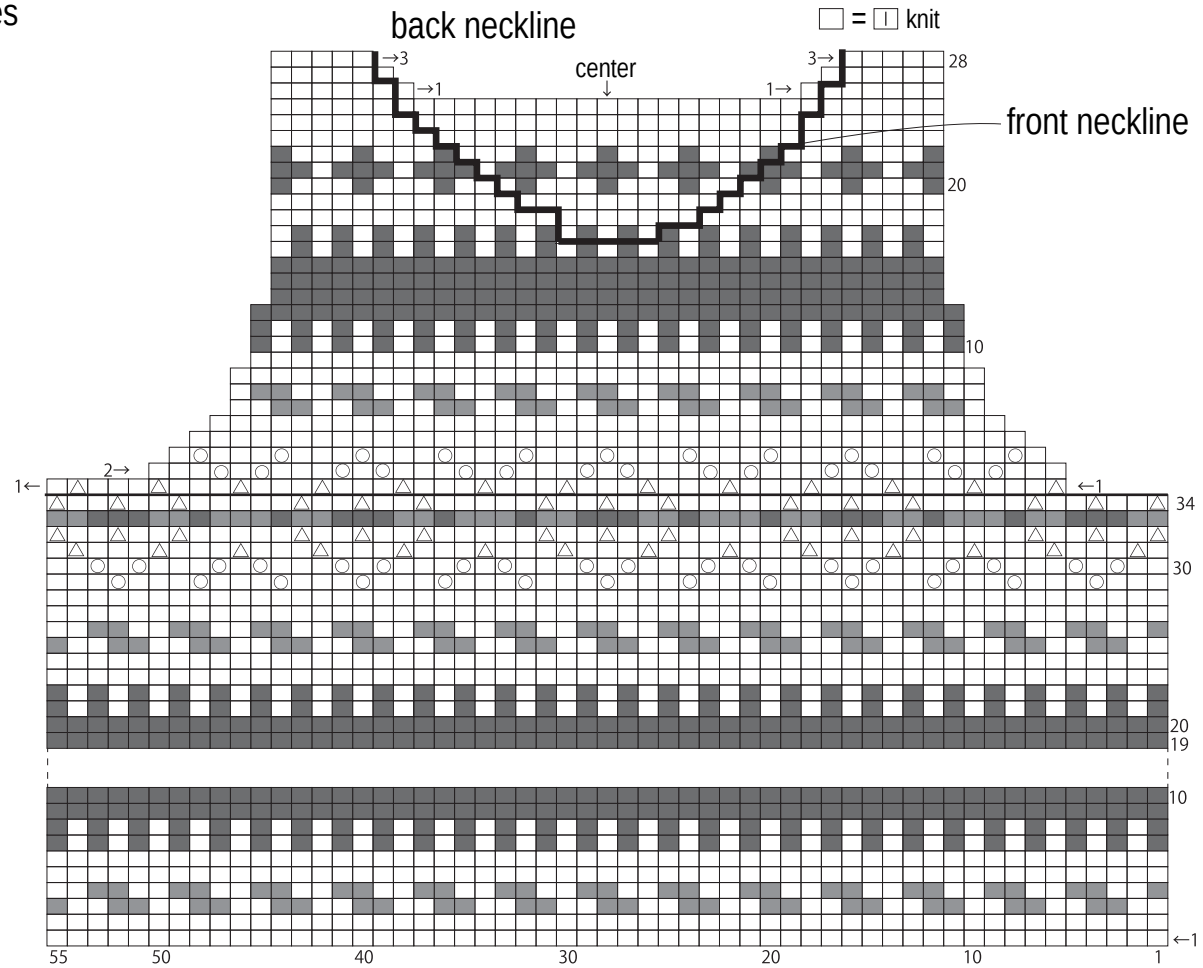
k1p1 ribbing  
5.4mm needles  
color #20 ecru beige



# Stranded pattern stitch

6.0mm needles

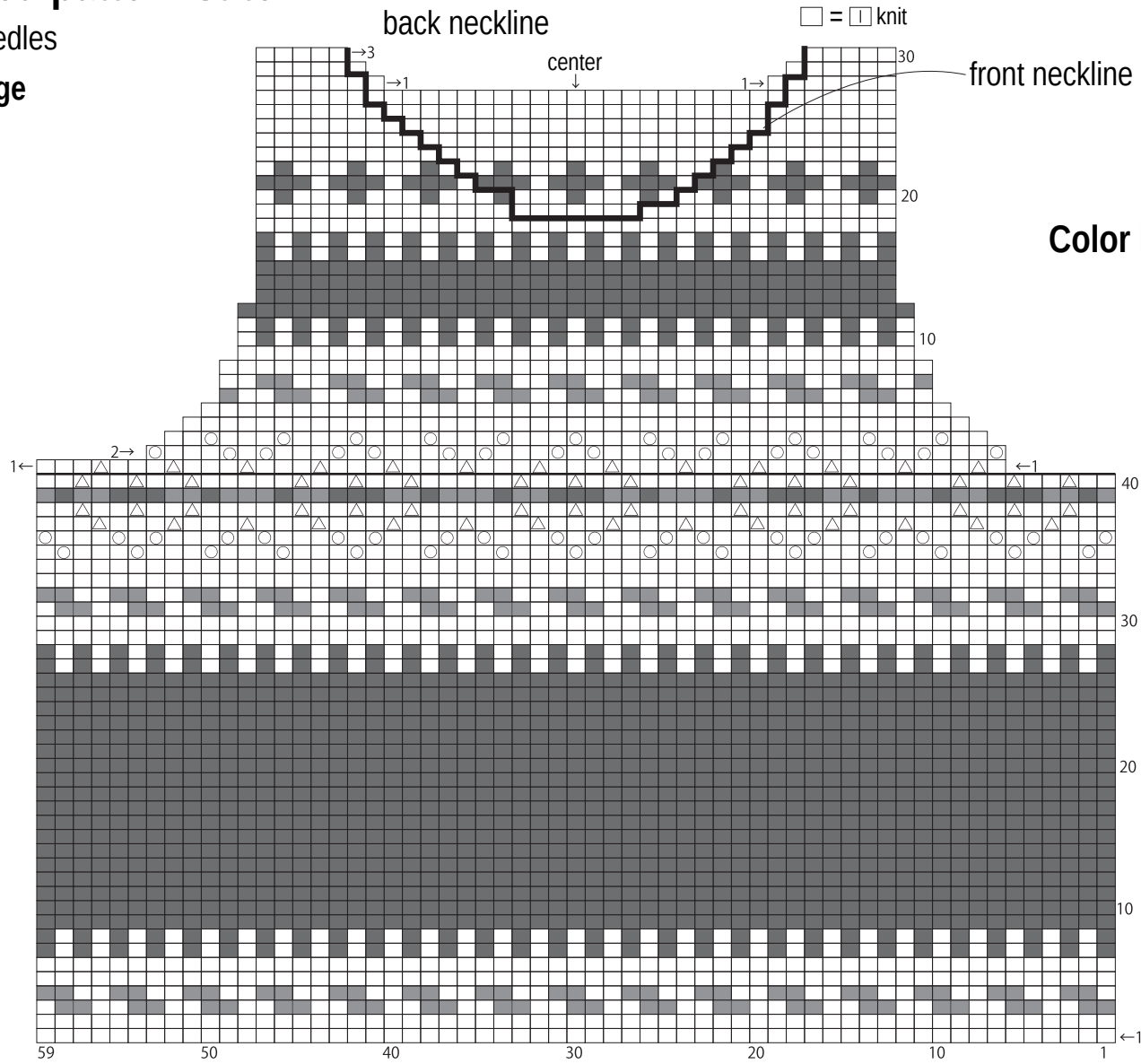
✪ size small



# Stranded pattern stitch

6.0mm needles

✳️size large



- Color key**
- △ = color #04 melange brown
  - = color #15 earth blue
  - = color #16 red bean
  - (dark gray) = color #18 blue gray
  - = color #20 ecru beige