

217aw-03 Abbey Convertible Scarf



Suggested yarn:

- version A: Pierrot Yarns Abbey [100% wool; 59yds/54m per 1.41 oz./40g skein]; color #102 dark forest, 7 skeins [270g]
- version B: Pierrot Yarns Fine Merino [100% merino wool; 103 yds/94m per 1.06 oz./30g skein]; color #223 saffron yellow, 10 skeins [300g]

Tools/Notions:

- version A: 6.6mm (approx. US 10½) knitting needles or size necessary to achieve gauge
- version B: 5.7mm (approx. US 9) knitting needles or size necessary to achieve gauge

Finished measurements:

- width 15cm/5.91"
- length 140cm/55.12"

Gauge (10cm/4" square):

- English rib (version A): 11 sts and 30 rows
- English rib (version B): 12.5 sts and 36 rows

Gauge may vary according to individual knitting style. Change needle size if necessary to achieve gauge. Alternatively, rework pattern with your own gauge measurements.

Summary

✿**Note:** Version A worked with 1 strand of yarn (Abbey). Version B worked with 2 strands of Fine Merino held together.

Body: Cast on with long-tail cast-on method. Work in English rib. Starting from second row, slip first stitch of every row (without knitting it).

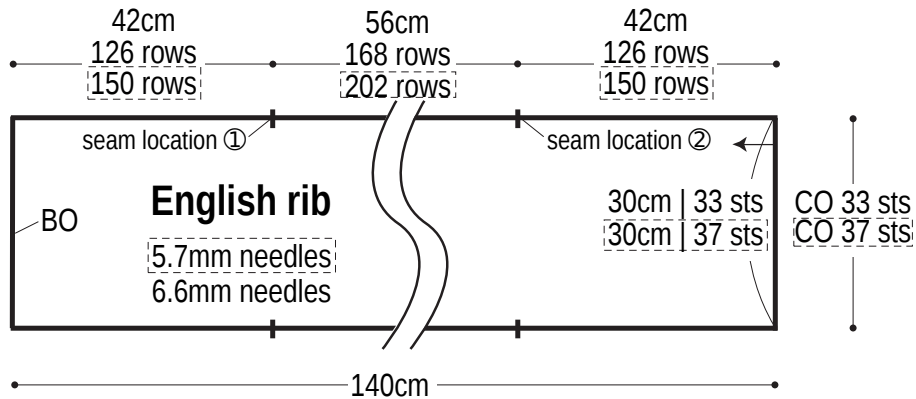
Finishing: Seam from cast-on edge to location ① using mattress stitch. Seam from location ② to bind-off edge using mattress stitch.

Abbreviations:

BO = bind off CO = cast on RS = right side WS = wrong side

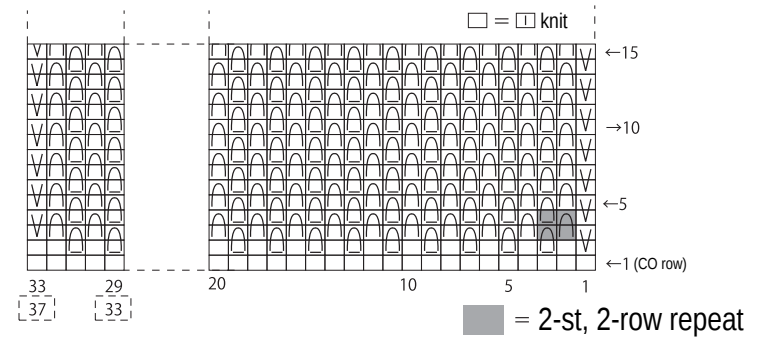
[] = Fine Merino (version B)

Schematic



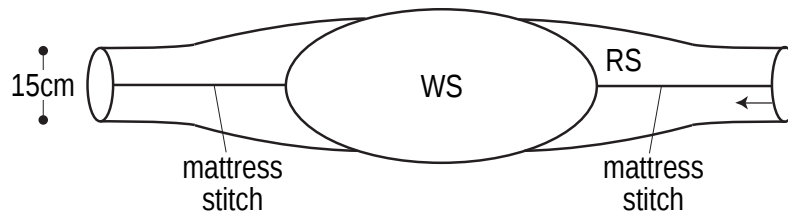
English rib

5.7mm needles 6.6mm needles



- [] = YO, slip 1 purlwise; on next row, work these 2 together
- [] = slip 1 purlwise, YO; on next row, work these 2 together
- [] = slip stitch

Finishing



Use QR code on smartphone to view a video tutorial on how to work English rib.



※To view on computer, search on the Pierrot Yarns website or YouTube channel instead.

検索