

# 1212neckw Cable Knit Neckwarmer



## Suggested yarn:

- Pierrot Yarns Soupir Wool [53% merin wool, 31% acrylic, 15% tencel, 1% silk; 79 yds/72m per 1.41 oz./40g skein]; color #06 sapphire blue, 2 skeins [80g]

## Tools/Notions:

- 4.5mm (US 7) knitting needles or size necessary to achieve gauge
- cable needle

## Finished measurements:

- length 50cm/19.69"
- width 23cm/9.06"

## Gauge (10cm/4" square):

- pattern stitch: 24.5 sts and 28 rows

*Gauge may vary according to individual knitting style. Change needle size if necessary to achieve gauge. Alternatively, rework pattern with your own gauge measurements.*

## Summary

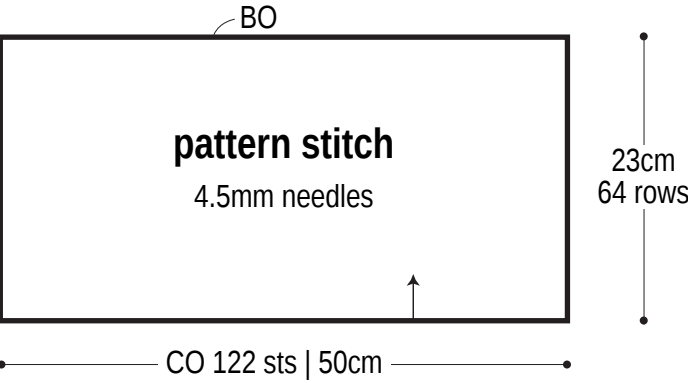
**Cowl:** Cast on with long-tail cast-on method. Work in pattern stitch. Bind off all stitches.

**Finishing:** With wrong sides facing each other, seam short ends together with mattress stitch.

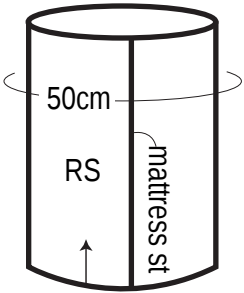
## Abbreviations:

BO = bind off  
CO = cast on  
RS = right side

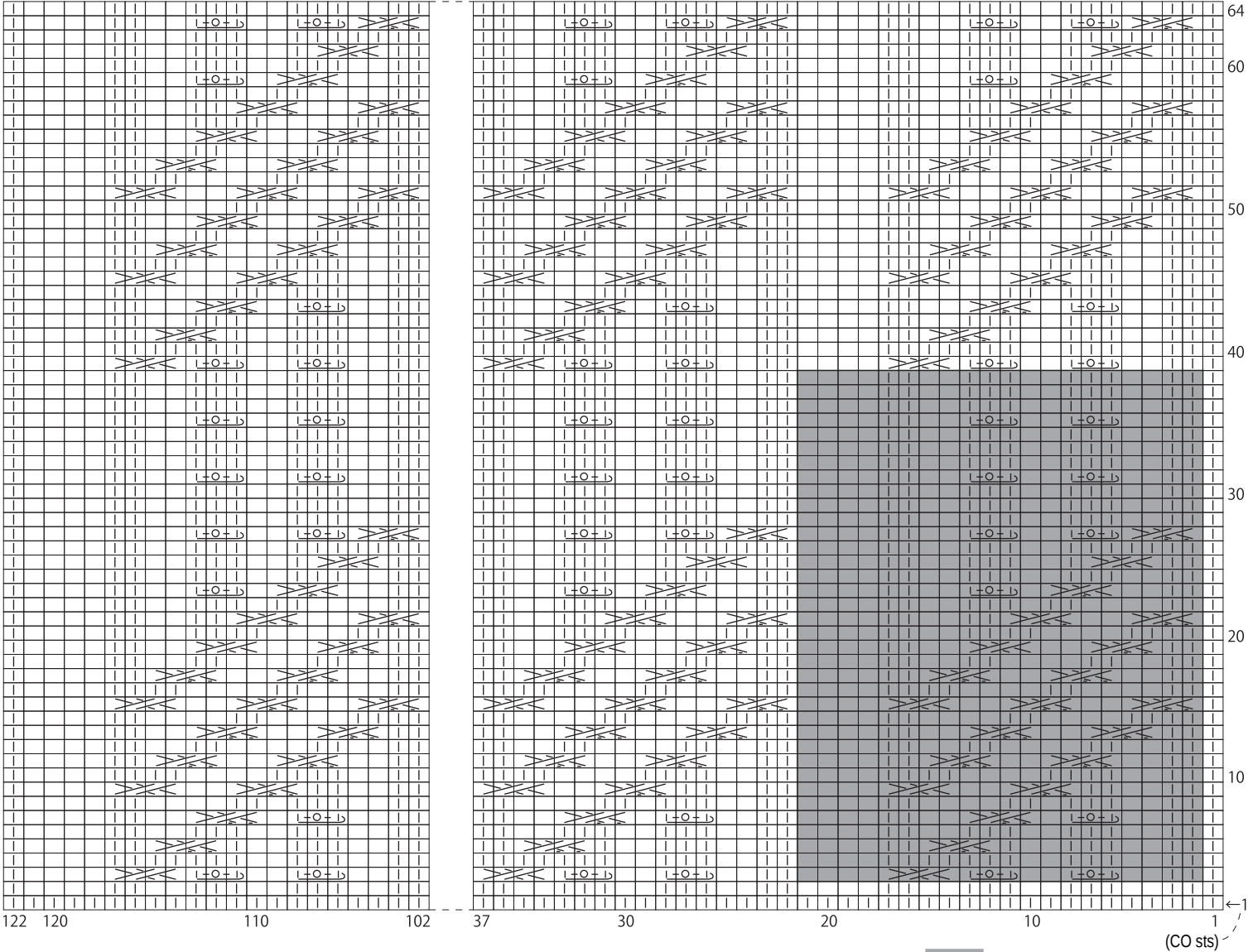
# Cowl schematic



# Finishing



# Pattern stitch 4.5mm needles



= C4B

= C4B (purl back sts)

= C4B (purl last back st)

= C4B (purl first back st)

= 1 left-leaning knot st

(Slip third st on left needle over first 2 sts and drop it off the needle. Purl 1, yarn over, purl 1.)

= 1 repeat  
= 20 sts & 36 rows