

# Two-pattern Cowl



## Suggested yarn:

- Pierrot Yarns Loisseau Bleu [100% merino wool; 79 yds/72m per 1.41 oz./40g skein];
  - color #01 milky, 2 skeins [55g]
  - color #10 ash grey, 4 skeins [140g]

## Tools/Notions:

- 5.1mm (approx. US H) Tunisian crochet hook or size necessary to achieve gauge
- 4.0mm (US G) crochet hook or size necessary to achieve gauge

## Finished measurements:

- length 120cm/47.24"
- width 27cm/10.63"

## Gauge (10cm/4" square):

- pattern stitch: 18 sts and 7.5 rows

*Gauge may vary according to individual crochet style. Change hook size if necessary to achieve gauge. Alternatively, rework pattern with your own gauge measurements.*

## Summary

❖**Note:** Like all Japanese patterns, stitch counts given here for foundation chains do not include any chain sts needed for turning posts.

**Cowl:** Work foundation chain to begin, then work Tunisian crochet in pattern stitch. Bind off with slip stitch bind-off method.

**Finishing:** With right sides facing you, seam foundation chain to bind-off edge using whipstitch. Work edging around each edge in the round.

## Abbreviations:

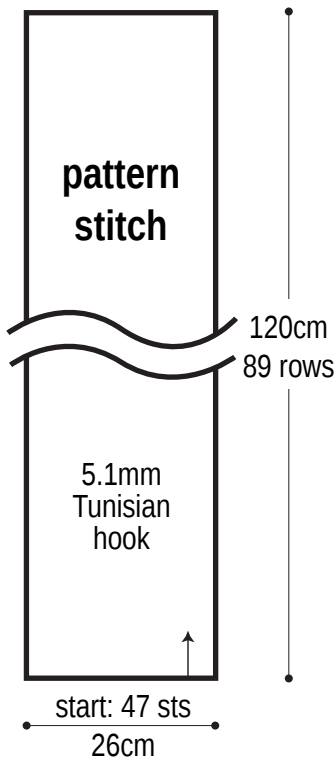
ch = chain


dc = double crochet (US)


RS = right side

Pattern stitch5.1mm Tunisian hook

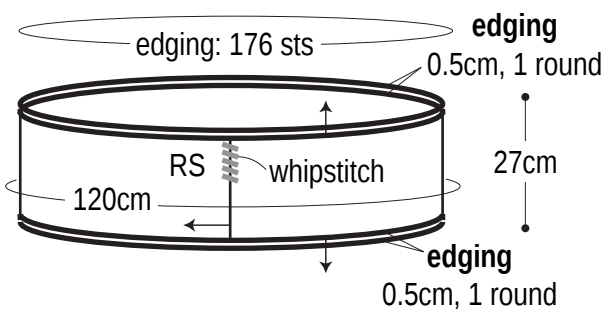
Cowl schematic



 = ch1, return 3 sts together, ch1

 = 3 dc into back loop of return st on previous row

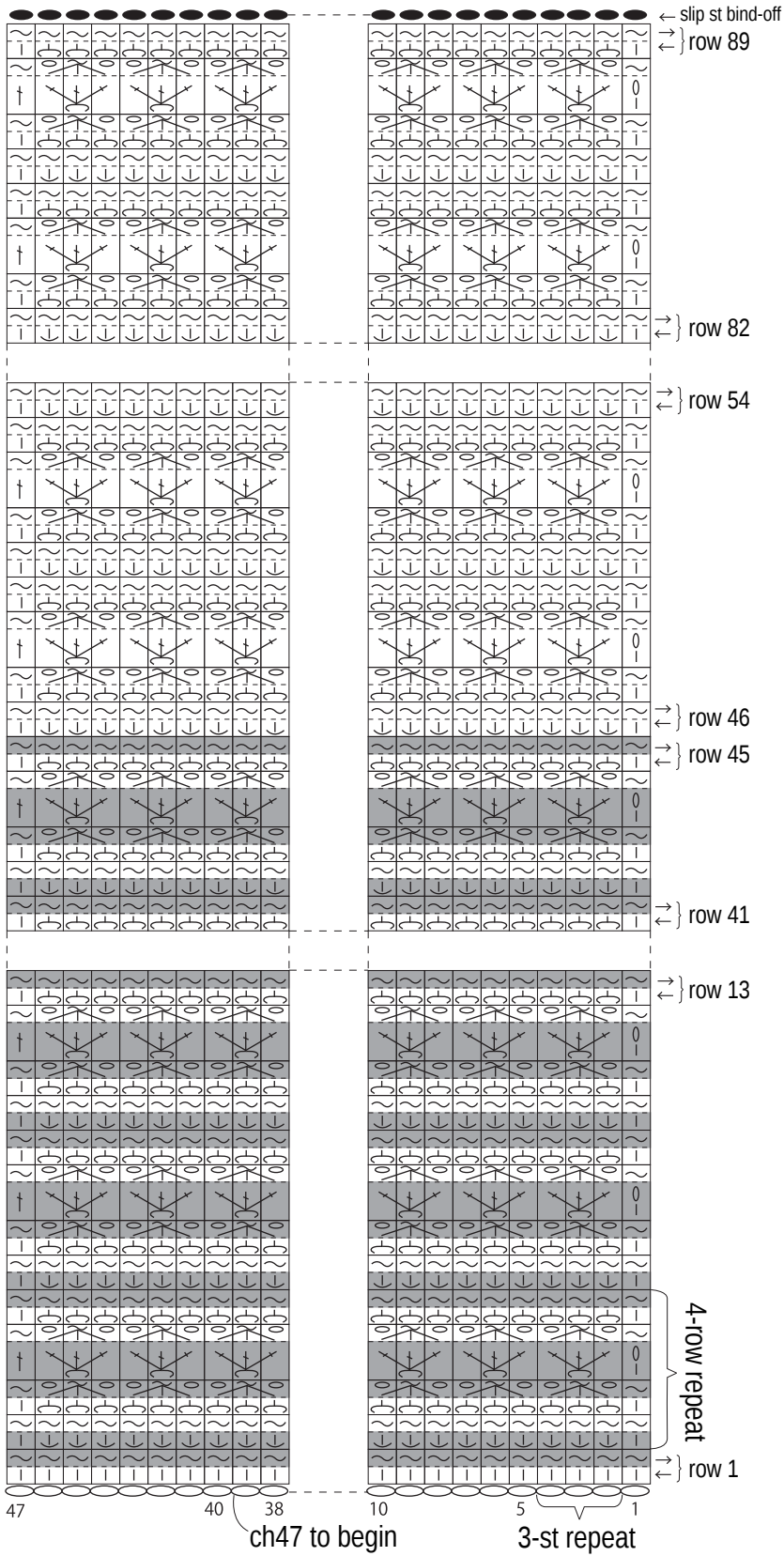
Finishing





Edging

4.0mm hook, color #10 ash grey

+++++0+++++ ←1



 = color #10 ash grey  
 = color #01 milky

※Rows 1-45: work pattern stitch in stripes of color #01 and color #10.  
※Rows 46-89: work pattern stitch in color #10 only.