

216aw-17 Zakkuri Sweater



Suggested yarn:

- Pierrot Yarns Lara [57% cotton, 43% alpaca; 104 yds/95m per 1.76 oz./50g skein];
 - ladies' size: color #12 milk white, 9 skeins [440g]
 - kids' size: color #09 mad navy, 5 skeins [215g]

Tools/Notions:

- 7.0mm (no exact US equivalent) knitting needles or size necessary to achieve gauge

Finished measurements:

- ladies' size:
 - bust 102cm/40.16"
 - center back neck-to-cuff 81.5cm/32.09"
 - back length 55cm/21.65"
- kids' size:
 - chest 78cm/30.71"
 - center back neck-to-cuff 54cm/21.26"
 - back length 38cm/14.96"

Gauge (10cm/4" square):

- garter stitch: 11 sts and 24 rows

Gauge may vary according to individual knitting style. Change needle size if necessary to achieve gauge. Alternatively, rework pattern with your own gauge measurements.

Summary

Body & sleeves: Cast on with long-tail cast-on method. Work in garter stitch. For front and back body, work body as continuation of body, working backwards loop cast-on increases where indicated. Make 2 body pieces and 2 sleeves.

Finishing: Seam shoulders with mattress stitch. Seam sides of collar with whipstitch. Seam sleeves to body with crochet slip stitch seam such that the seam isn't too tight. Seam sleeves and sides with whipstitch.

Abbreviations:

BO = bind off

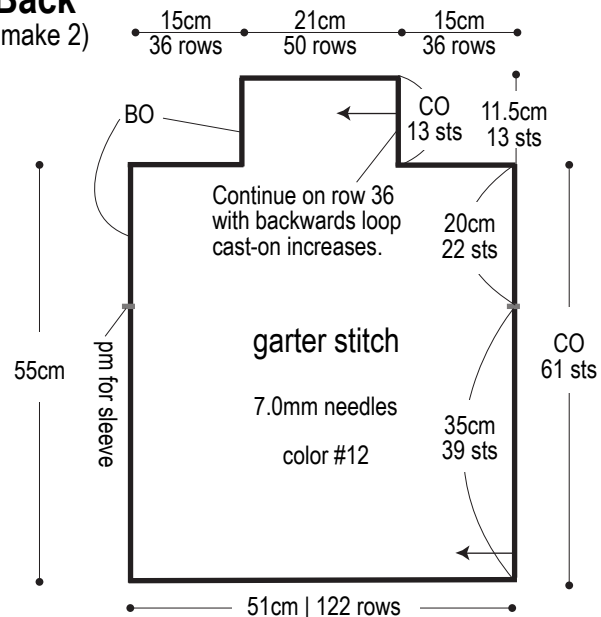
CO = cast on

pm = place marker

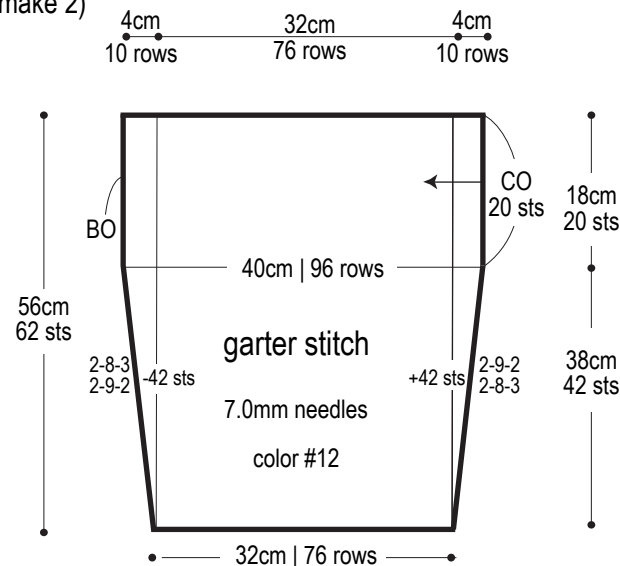
#-#-# = rows-stitches-times

Ladies'

Back (make 2)



Front (make 2)



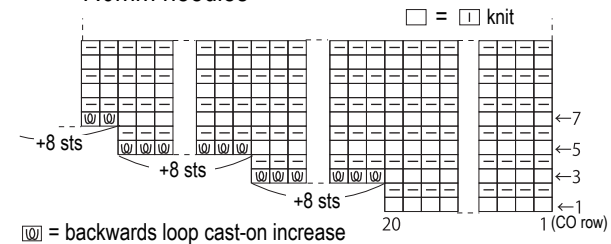
Garter stitch

7.0mm needles



Sleeve increases (ladies')

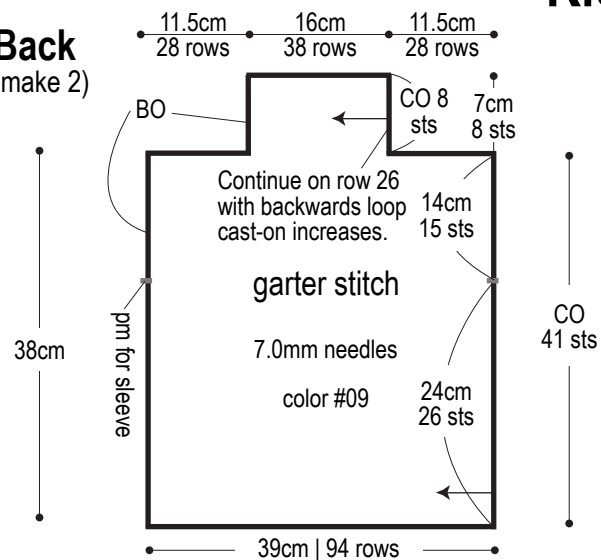
7.0mm needles



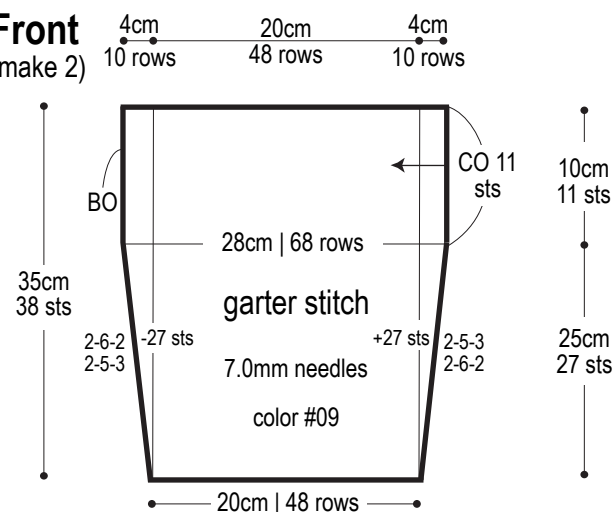
⊗ = backwards loop cast-on increase
*Use same increase method for kids' sleeves.

Kids'

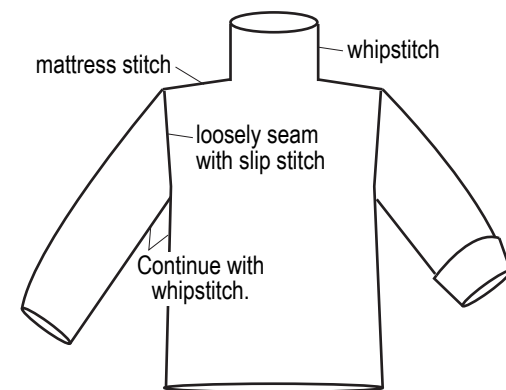
Back (make 2)



Front (make 2)



Finishing



*Due to the sideways construction, the sleeves may be somewhat too long for your liking. Fold cuffs as desired.