

1212mf Hooded Muffler



Suggested yarn:

- Pierrot Yarns Soupier Wool [53% merino wool, 31% acrylic, 15% lyocell, 1% silk; 79 yds/72m per 1.41 oz./40g skein]; color #08 slate gray, 8 skeins [310g]

Tools/Notions:

- 3.9mm (approx. US 6) and 4.5mm (US 7) knitting needles or sizes necessary to achieve gauge
- cable needle

Finished measurements:

- width 24cm/9.45"
- length (excluding hood) 172cm/67.72"

Gauge (10cm/4" square):

- pattern stitch: 21 sts and 23 rows

Gauge may vary according to individual knitting style. Change needle size if necessary to achieve gauge. Alternatively, rework pattern with your own gauge measurements.

Summary

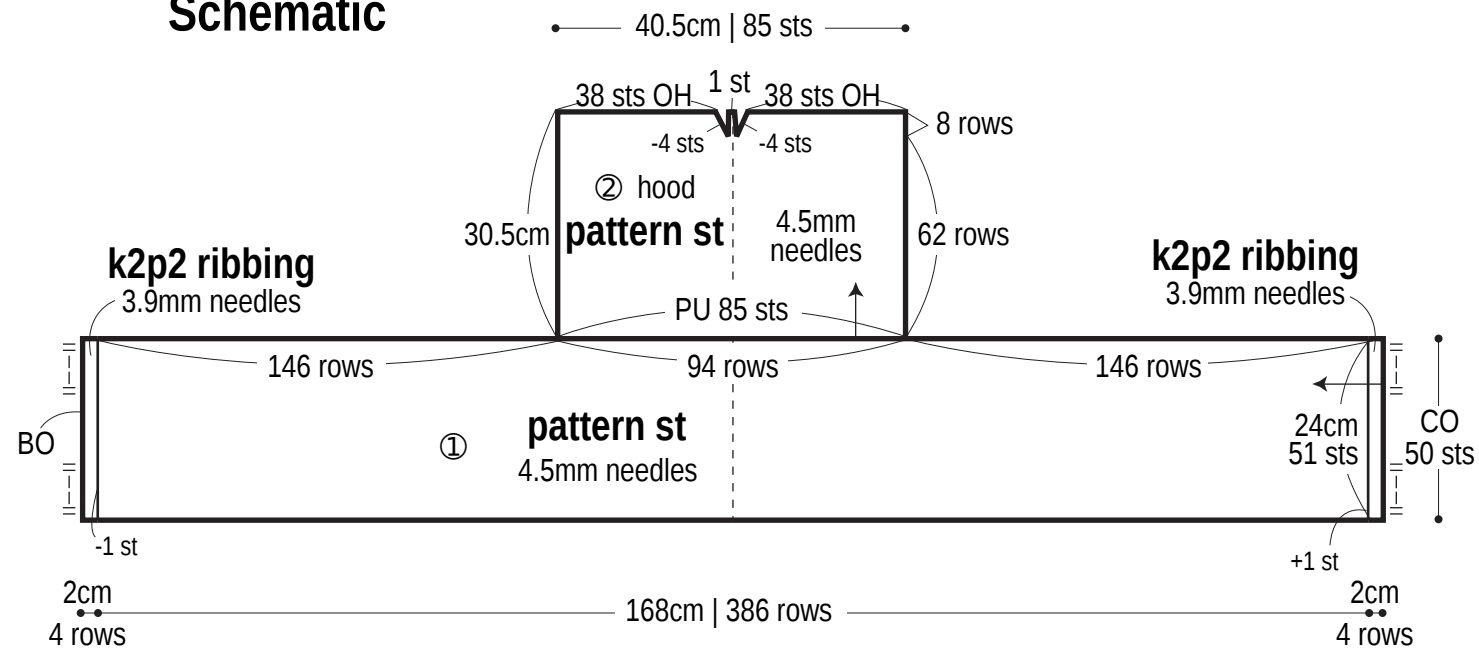
Piece ①: Cast on with long-tail cast-on method. Work in k2p2 ribbing, then continue in pattern stitch, then work in k2p2 ribbing again. Bind off in pattern.

Piece ②: Referring to schematic, pick up 85 stitches along edge of piece ①. Work in pattern stitches. When finished, place stitches on stitch holder rather than binding off. With right sides facing, seam pieces together with crochet slip stitch seam.

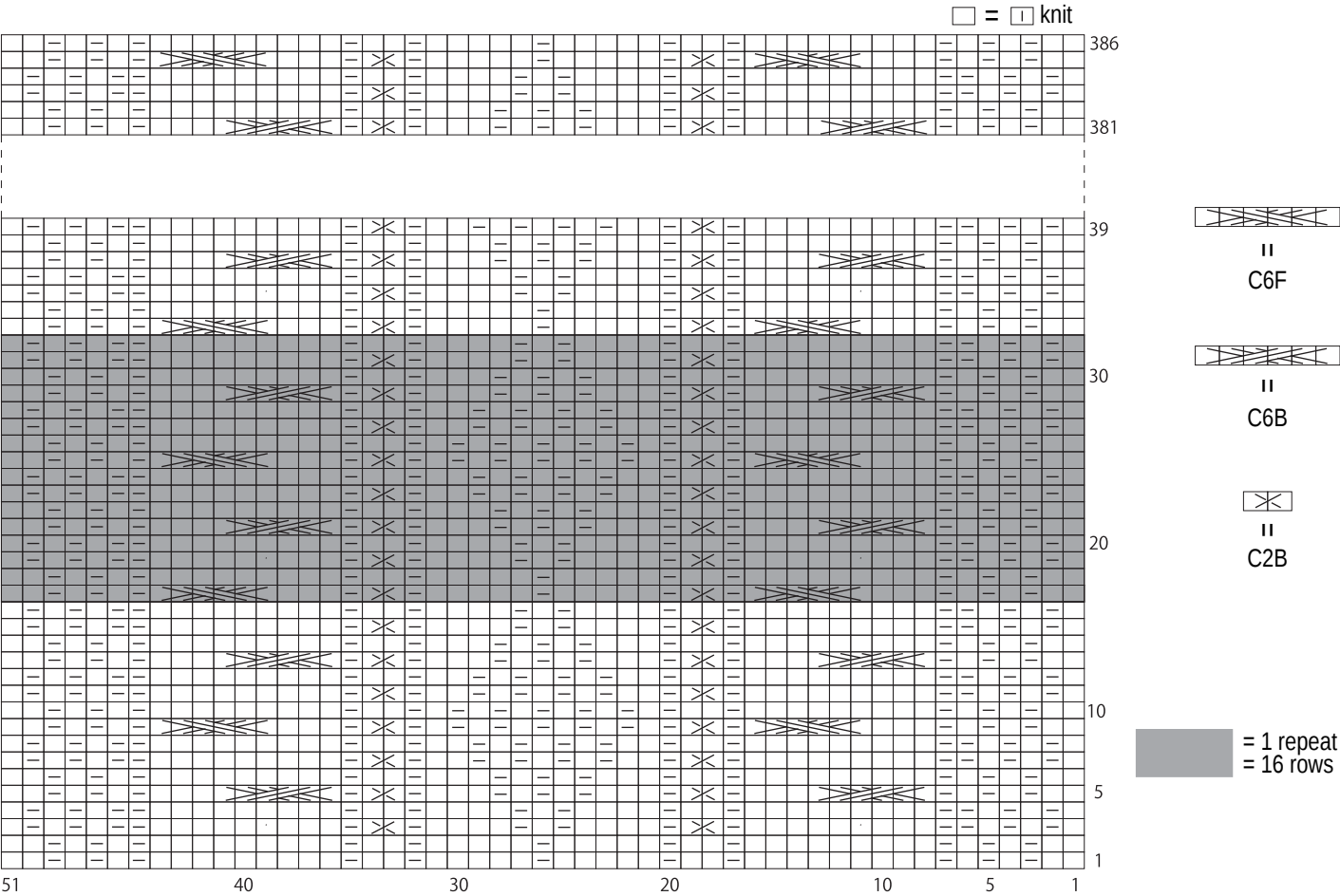
Abbreviations:

BO = bind off
CO = cast on
k = knit
OH = on hold (that is, place on stitch holder)
p = purl
PU = pick up

Schematic



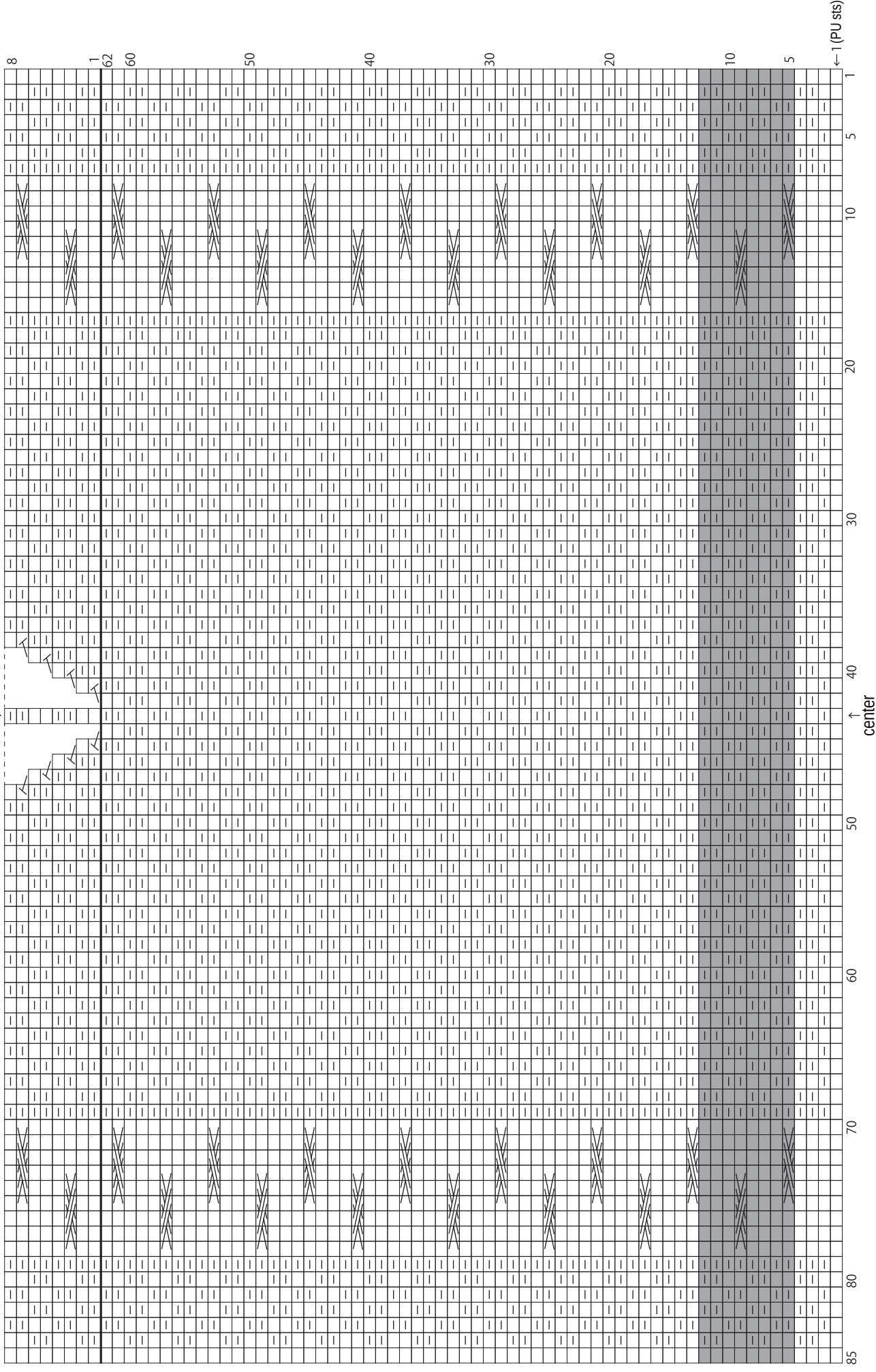
Pattern stitch: piece ①



Pattern stitch: piece ②

center

□ = □ knit



= 1 repeat
 = 8 rows