

216aw-10 Reversible Scarf



Suggested yarn:

- Pierrot Yarns Savon [100% nylon; 61 yds/56m per 1.41 oz./40g skein]; color #08 turquoise, 3 skeins [115g]
- Pierrot Yarns Momo-little [100% merino wool; 118 yds/108m per 1.06 oz./30g skein];
 - color #03 aloe, 2 skeins [60g]
 - color #10 ivy gray, 3 skeins [90g]

Tools/Notions:

- 3.6mm (approx. US 5) and 5.7mm (approx. US 9) knitting needles or sizes necessary to achieve gauge

Finished measurements:

- width 19cm/7.48"
- length 156cm/61.42"

Gauge (10cm/4" square):

- stranded pattern stitch: 30.5 sts and 32.5 rows
- garter stitch: 13 sts and 14 rows

Gauge may vary according to individual knitting style. Change needle size if necessary to achieve gauge. Alternatively, rework pattern with your own gauge measurements.

Summary

Stranded pattern stitch piece: Cast on with long-tail cast-on method. Work in stranded pattern stitch, taking care not to ????. Bind off.

Garter stitch piece: Cast on with long-tail cast-on method. Work in garter stitch. Bind off.

Finishing: With wrong sides facing each other, seam the outer edges of the two pieces together using whipstitch.

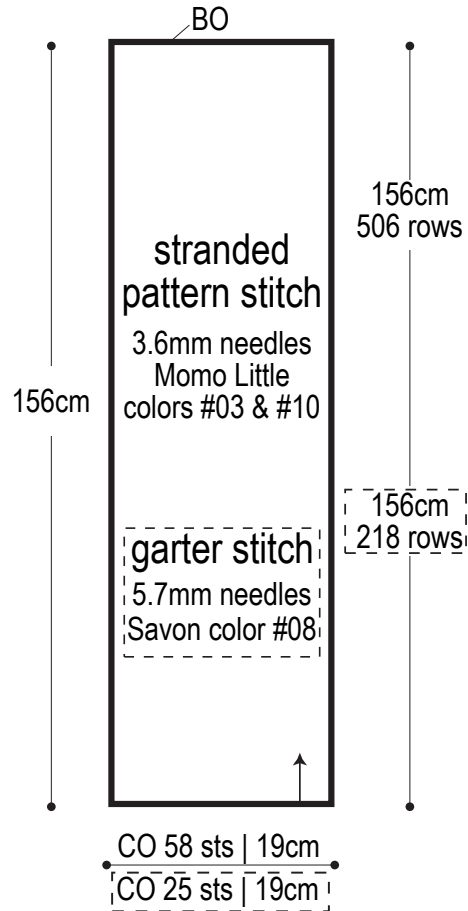
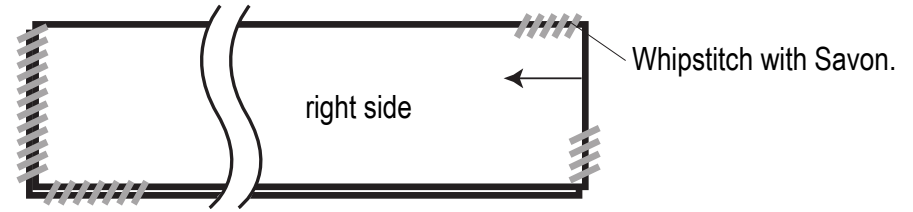
Abbreviations:

BO = bind off CO = cast on

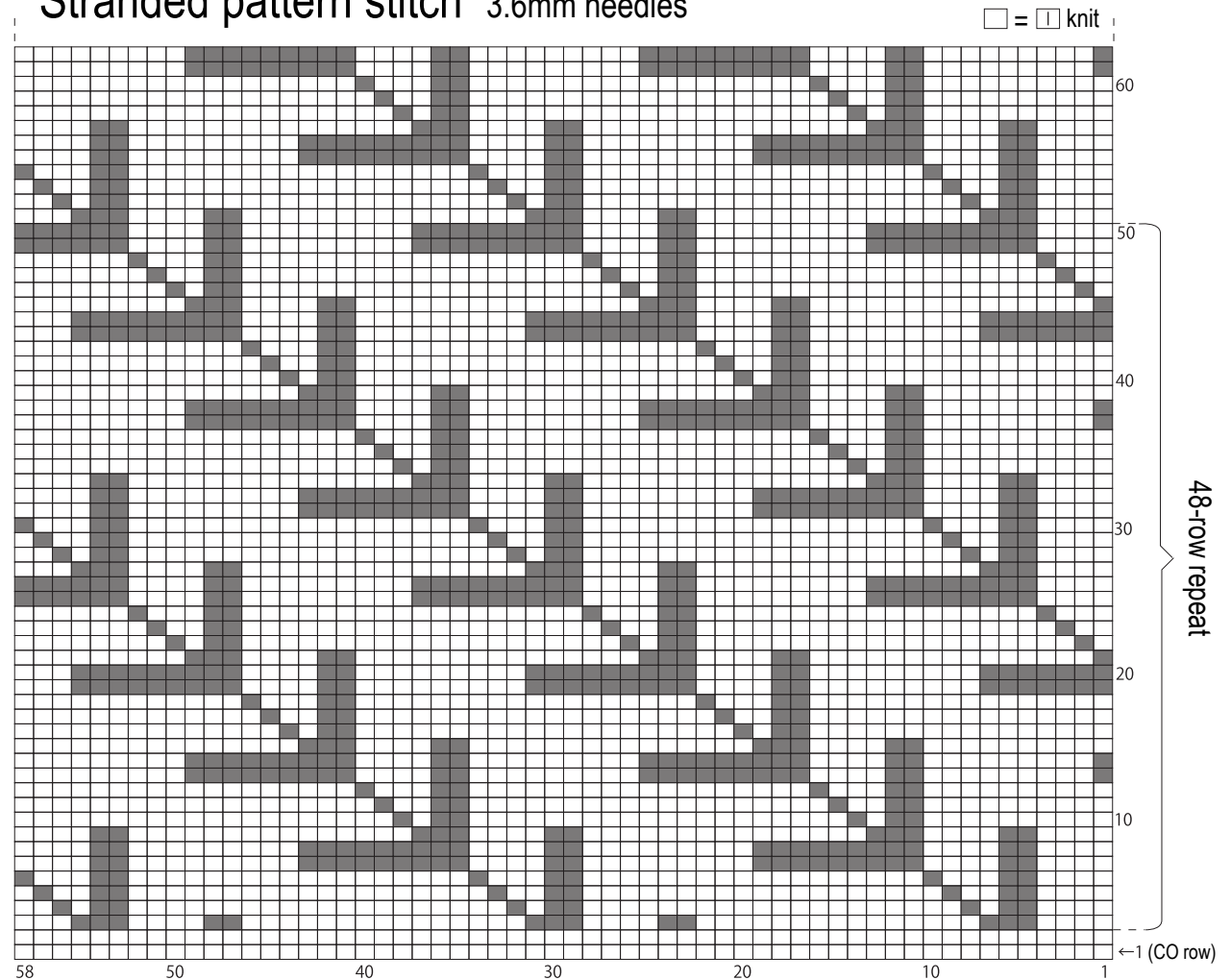
Scarf

1 piece in stranded pattern stitch
1 piece in garter stitch

Finishing



Stranded pattern stitch 3.6mm needles



□ = color #10 ivy gray
■ = color #03 aloe

□ = garter stitch