

# Hokkori Cowl



## Suggested yarn:

- Keito-Zakka Stores Smoothness Silk Wool [80% wool, 20% silk; 120 yds/110m per 1.41 oz./40g skein]; color #2 honey beige, 5 skeins [190g]
- Keito-Zakka Stores Plume [55% acrylic, 30% nylon, 15% wool; 274 yds/251m per 0.88 oz./25g skein]; color #07 lune, 4 skeins [90g]

## Tools/Notions:

- 4.5mm (US 7) double-pointed knitting needles or size necessary to achieve gauge

## Finished measurements:

- width 38cm/14.96"
- circumference 136cm/53.54"

## Gauge (10cm/4" square):

- English rib stitch: 14 sts and 37 rows

*Gauge may vary according to individual knitting style. Change needle size if necessary to achieve gauge. Alternatively, rework pattern with your own gauge measurements.*

## Summary

❖**Note:** Entire cowl worked with 3 strands of yarn held together (1 strand of Smoothness Silk Wool and 2 strands of Plume).

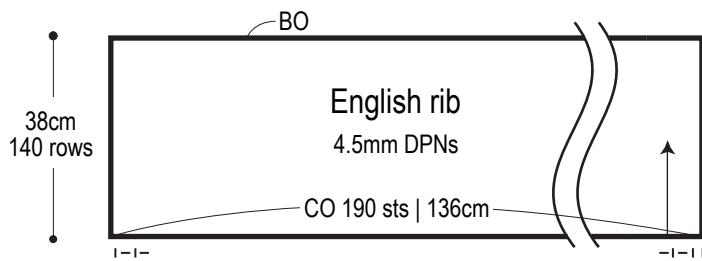
**Body of cowl:** Cast on with long-tail cast-on method with double pointed-needles (to accommodate the large number of stitches). Work in English rib stitch. Bind off in pattern.

**Finishing:** Seam cast-on edge to bind-off edge with mattress stitch.

## Abbreviations:

BO = bind off  
CO = cast on  
k = knit  
p = purl  
YO = yarn over

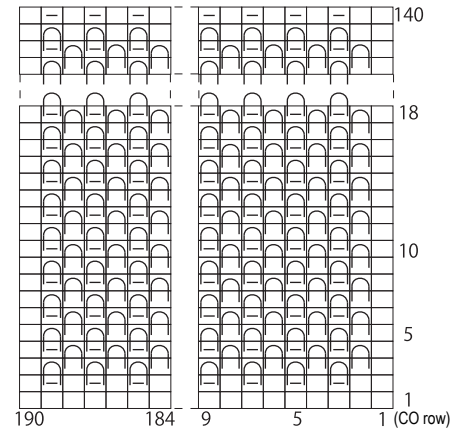
## Body of cowl



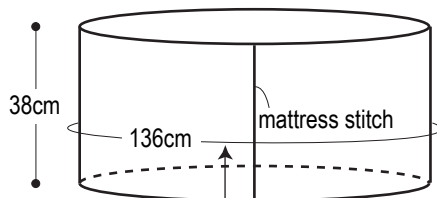
## English rib

4.5mm DPNs

□ = □ knit



## Finishing



## English rib

