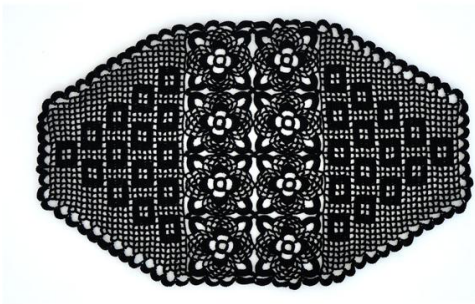


592tc Romantic Lace Table Center



Suggested yarn:

- Pierrot Yarns Cotton Lace #20 [100% cotton; 170 yds/155m per 1.41 oz./40g skein];
 - color #208 black, 3 skeins [95g]

Tools/Notions:

- 1.25mm (approx. US steel hook #10) crochet hook or size necessary to achieve gauge

Finished measurements:

- center panel width 17cm/6.69"
- center panel height 34cm/13.39"
- side panel width 17cm/6.69"
- outer edge height 12cm/4.72"
- outer perimeter 1cm/0.39"

Gauge:

- center motif: 8.5cm/3.35" square

Gauge may vary according to individual crochet style. Change hook size if necessary to achieve gauge. Alternatively, rework pattern with your own gauge measurements.

Summary

***Note:** Like all Japanese patterns, stitch counts given here for foundation chains do not include any chain sts needed for turning posts.

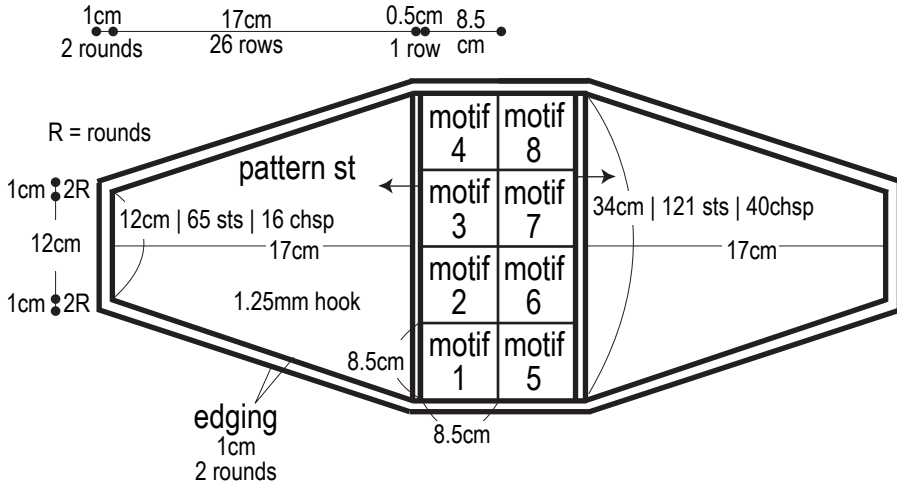
Chain 10 to begin, then work motif according to chart. Starting from second motif, join motifs together on last round using slip stitch. Once center panel of 8 motifs is complete, work pattern stitch along long edge of center panel. Repeat on other side of center panel. Work edging in the round.

Abbreviations:

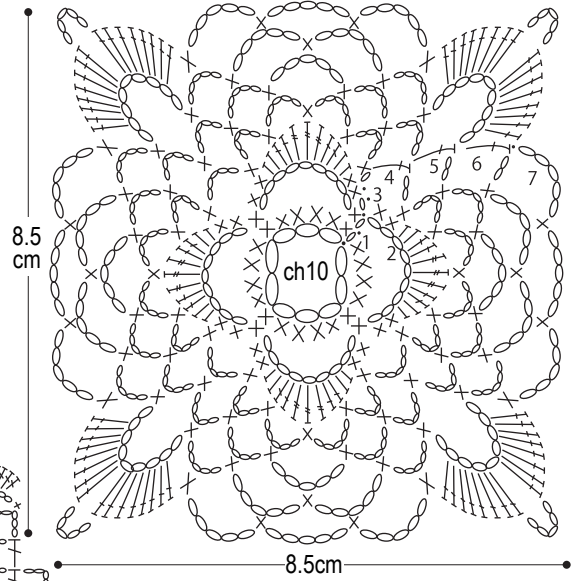
ch = chain

chsp = chain space(s)

Schematic



Motif 1.25mm hook



Chart

1.25mm hook

