

641muf Elegant Muffler



Suggested yarn:

- Pierrot Yarns Lourdes [60% mohair, 40% silk; 306 yds/280m per 0.88 oz./25g skein];
 - color #01 milky white, 2 skeins [35g]
- Pierrot Yarns Julien [95% silk, 5% polyester; 192 yds/176m per 1.41 oz./40g skein];
 - color #80 pickles, 3 skeins [100g]

Tools/Notions:

- 3.5mm (US E) crochet hook or size necessary to achieve gauge

Finished measurements:

- width 22cm/8.66"
- length 146cm/57.48"

Gauge (10cm/4" square):

- pattern stitch: 24.5 sts and 12 rows

Gauge may vary according to individual crochet style. Change hook size if necessary to achieve gauge. Alternatively, rework pattern with your own gauge measurements.

Summary

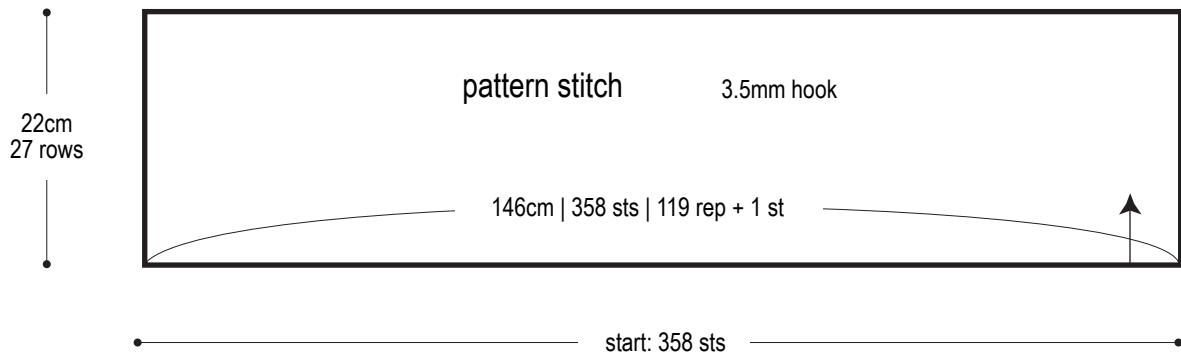
❖**Note:** Like all Japanese patterns, stitch counts given here for foundation chains do not include any chain sts needed for turning posts.

With two strands of yarn held together (1 strand of Julien and 1 strand of Lourdes), work foundation chain to begin, then work in pattern stitch according to chart and schematic.

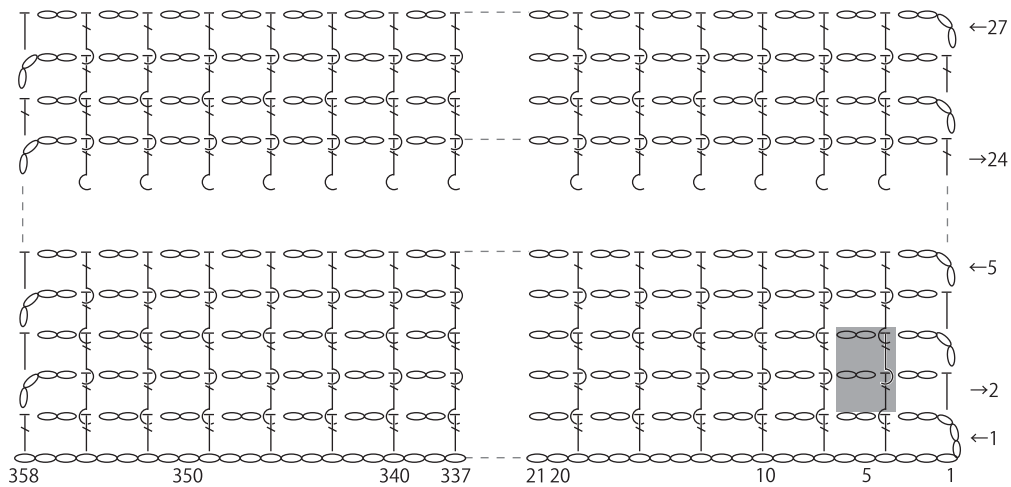
Abbreviations:


bp = back post
ch = chain
dc = double crochet (US)
fp = front post
rep = pattern repeat(s)


Schematic




Pattern stitch 3.5mm hook



 = 1 repeat = 3 sts & 2 rows

 = fp dc

 = bp dc

※Note that chart shows the right side of the fabric,
so when you are actually working the chart, every
row will have post stitches (except row 1).