

# 215w-10 Herringbone Cardigan



## Suggested yarn:

- Pierrot Yarns Fine Merino [100% merino wool; 103 yds/94m per 1.06 oz./30g skein];
  - color #223 saffron yellow, 5 skeins [150g]
  - color #230 sleet gray, 2 skeins [55g]

## Tools/Notions:

- 3.6mm (approx. US 5) and 3.9mm (approx. US 6) knitting needles or sizes necessary to achieve gauge
- 5 buttons (20mm/0.79")

## Finished measurements:

- chest 78cm/30.71"
- center back neck-to-cuff 43cm/16.93"
- back length 36cm/14.17"

## Gauge (10cm/4" square):

- stranded pattern stitch: 23 sts and 30 rows
- moss stitch: 23 sts and 31 rows

*Gauge may vary according to individual knitting style. Change needle size if necessary to achieve gauge. Alternatively, rework pattern with your own gauge measurements.*

## Summary

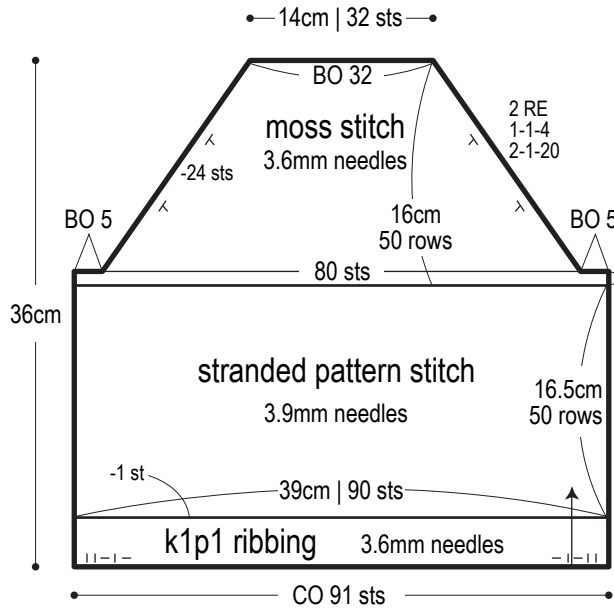
**Body & sleeves:** Cast on with long-tail cast-on method. Work in k1p1 ribbing, then continue in pattern stitch followed by moss stitch. Seam raglan edges by working decreases at edges as indicated. Reverse shaping of right front for left front.

**Finishing:** Seam raglan edges with mattress stitch. Seam underarm gusset with Kitchener stitch. Seam sides and sleeve undersides in one continuous mattress stitch seam (per side). Pick up stitches around neckline and work collar in k1p1 ribbing; bind off in pattern. Pick up stitches along front edges, respectively, and work buttonband in k1p1 ribbing, with buttonholes in right front buttonband only. Bind off in pattern.

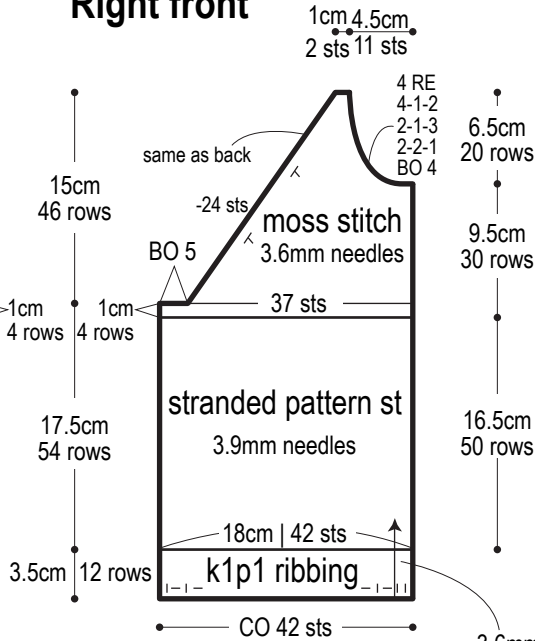
## Abbreviations:

BO = bind off    CO = cast on    k = knit    p = purl    PU = pick up    RE = row(s) even    #-#-# = rows-stitches-times

### Back

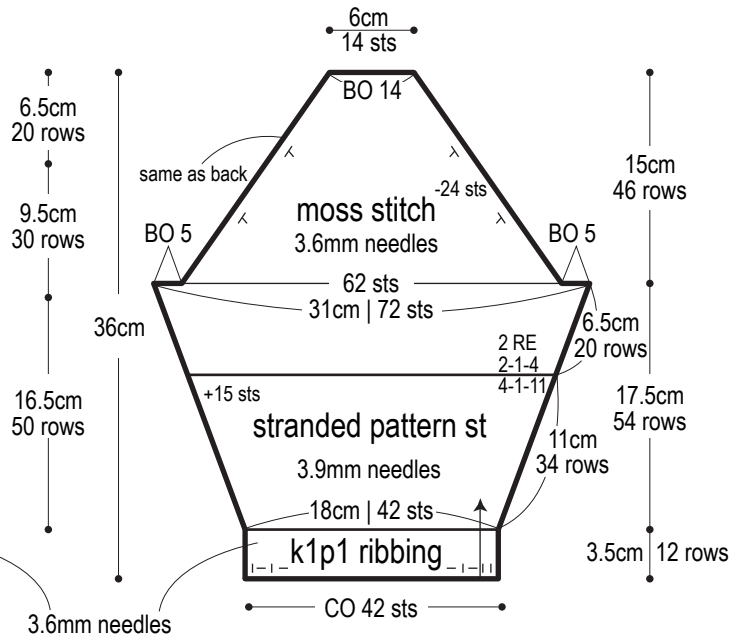


### Right front

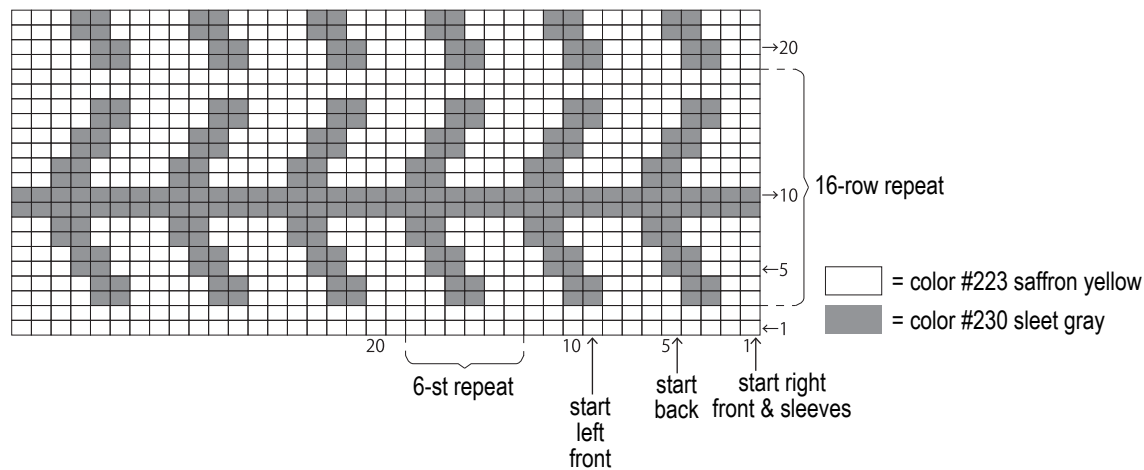


✳️Reverse shaping for left front.

### Sleeve

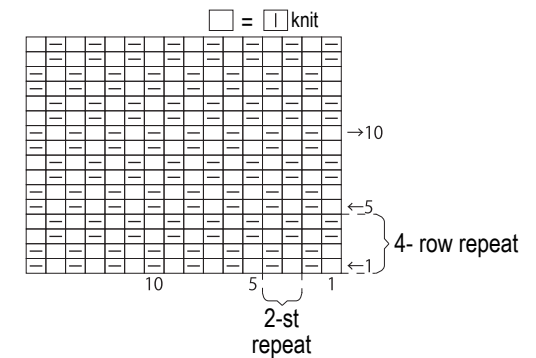


### Stranded pattern stitch 3.9mm needles

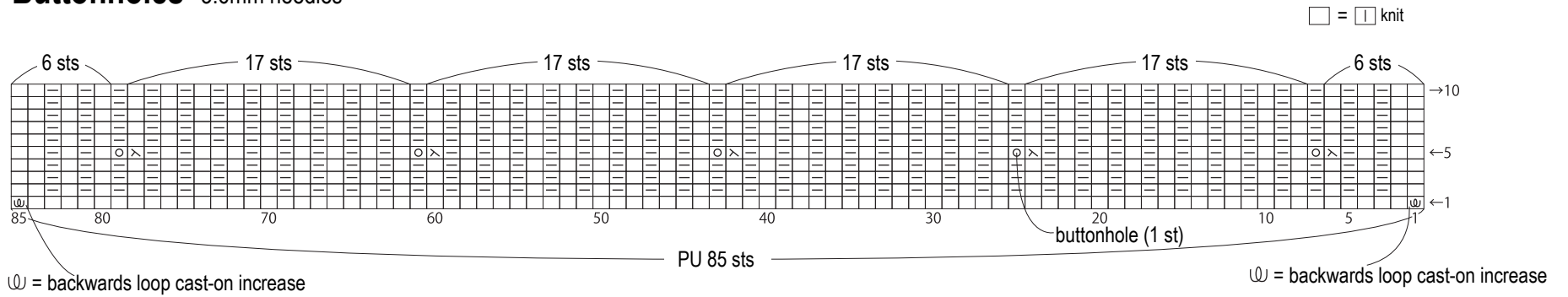


### Moss stitch 3.9mm needles

color #223 saffron yellow



# Buttonholes 3.6mm needles



# Finishing

k1p1 ribbing, 3.6mm needles  
color #223 saffron yellow

