

215w-17 Friends Mini Muffler



Suggested yarn:

- Pierrot Yarns Friends [65% wool, 35% acrylic; 186 yds/170m per 1.41 oz./40g skein];
 - color #02 lemon yellow, 1 skein [35g]
 - color #03 rose pink, 1 skein [35g]
 - color #09 cochineal, 1 skein [40g]

Tools/Notions:

- 3.9mm (approx. US G) Tunisian crochet hook or size necessary to achieve gauge

Finished measurements:

- width 15cm/5.91"
- length 82cm/32.28"

Gauge (10cm/4" square):

- pattern stitch: 24.5 sts and 15.5 rows

Gauge may vary according to individual crochet style. Change hook size if necessary to achieve gauge. Alternatively, rework pattern with your own gauge measurements.

Summary

✳️**Note:** Like all Japanese patterns, stitch counts given here for foundation chains do **not** include any chain sts needed for turning posts.

Scarf: Work foundation chain to begin. Work in pattern stitch, changing color every row as indicated in chart. Bind off with slip stitch using same color as last row. Make second piece identical to first.

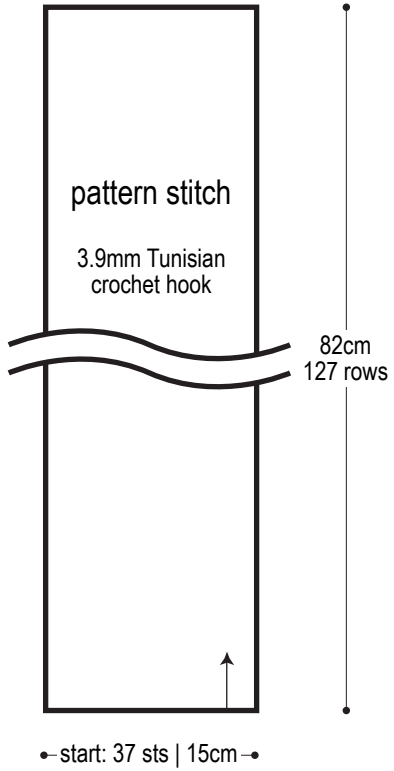
Finishing: With wrong sides facing each other, seam the two pieces together at sides using mattress stitch. Seam short edges with whipstitch.

Abbreviations:

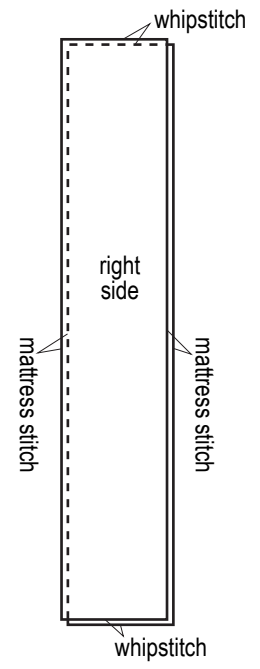
ch = chain

dc = double crochet (US)

Scarf (make 2)



Finishing

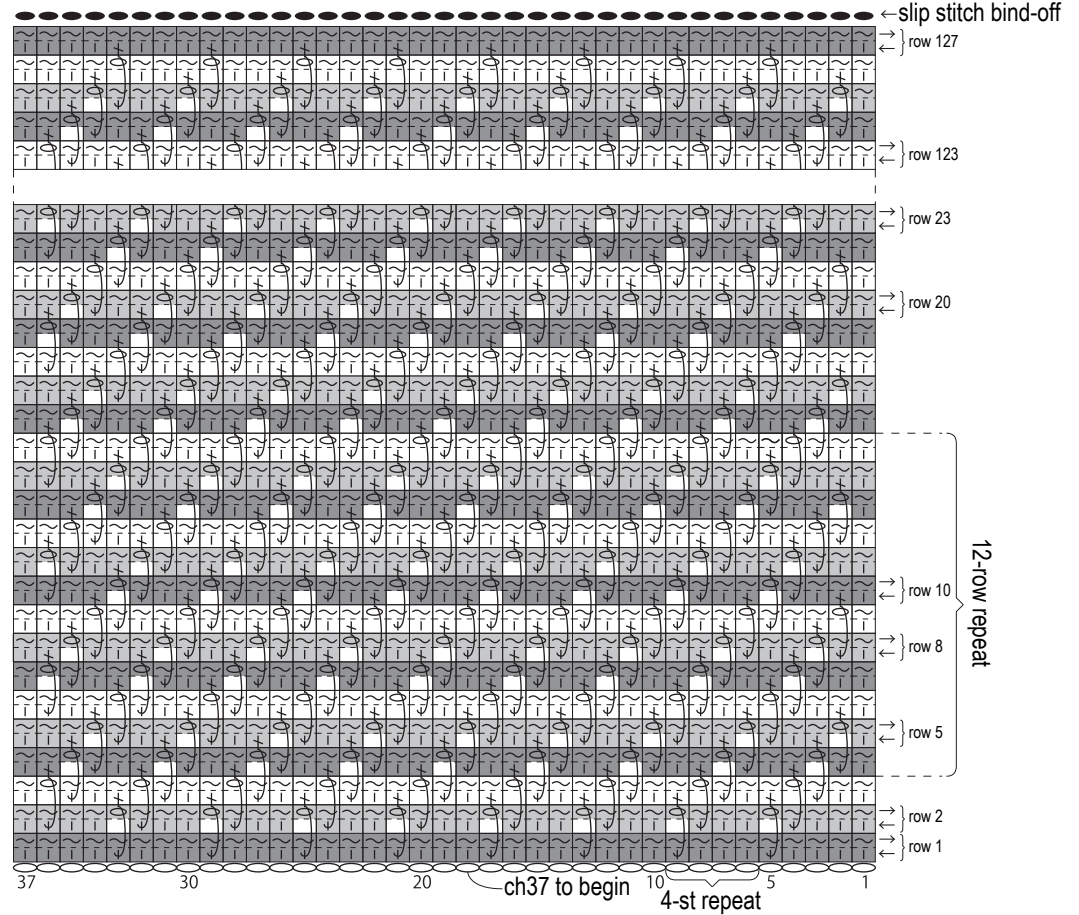


Use QR code on smartphone to view a video tutorial on mattress stitch.

※To view on computer, search on the Pierrot Yarns website or YouTube channel instead.

検索

Pattern stitch 3.9mm Tunisian crochet hook



- = color #02 lemon yellow
- = color #03 rose pink
- = color #09 cochineal
- = dc post stitch
- = chain stitch
- = no stitch