

215w-07 Zigzag Dress



Suggested yarn:

- Pierrot Yarns Urban [100% merino wool; 394 yds/360m per 1.41 oz./40g skein];
 - ladies' size:
 - color #05 dark navy, 4 skeins [160g]
 - color #07 deep green, 4 skeins [130g]
 - kids' size:
 - color #01 off-white, 2 skeins [80g]
 - color #02 ink blue, 3 skeins [110g]

Tools/Notions:

- 2.3mm (approx. US B), 2.5mm (approx. US B or C), and 3.0mm (approx. US C or D) crochet hooks or sizes necessary to achieve gauge

Finished measurements:

- ladies' size:
 - bust 92cm/36.22"
 - cross back width 34cm/13.39"
 - back length 79.5cm/31.30"
- kids' size:
 - chest 70cm/27.56"
 - cross back width 26cm/10.24"
 - back length 62cm/24.41"

Gauge (10cm/4" square):

- pattern stitch (with 2.3mm hook): 37 sts and 18 rows
- pattern stitch (with 2.5mm hook): 32 sts and 16 rows
- pattern stitch (with 3.0mm hook): 29 sts and 15 rows

Gauge may vary according to individual crochet style. Change hook size if necessary to achieve gauge. Alternatively, rework pattern with your own gauge measurements.

Summary

✳️**Note A:** Like all Japanese patterns, stitch counts given here for foundation chains do **not** include any chain sts needed for turning posts.

✳️**Note B:** Entire dress worked with 2 strands of yarn held together.

Body & sleeves: Work foundation chain so that you have a total of 129 stitches (kids' size) or 171 stitches (ladies' size). Work in pattern stitch, changing hook size when indicated to alter gauge. Work edging around hem.

Finishing: Seam sides with chain seam (alternation chain st and slip st as needed to maintain pattern). Work edging along armholes in rows. Join shoulders by working chain sts along front and back necklines. Work edging in the round along neckline.

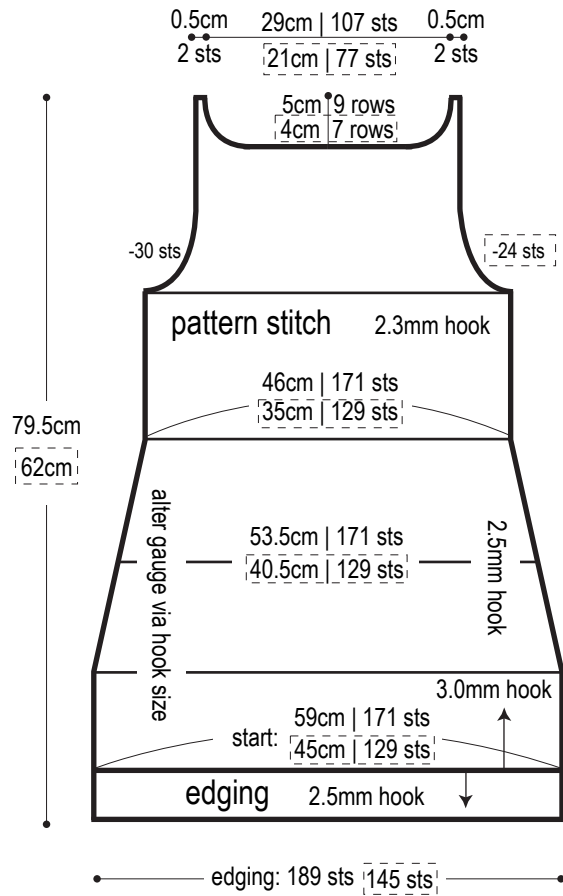
Abbreviations:

ch = chain

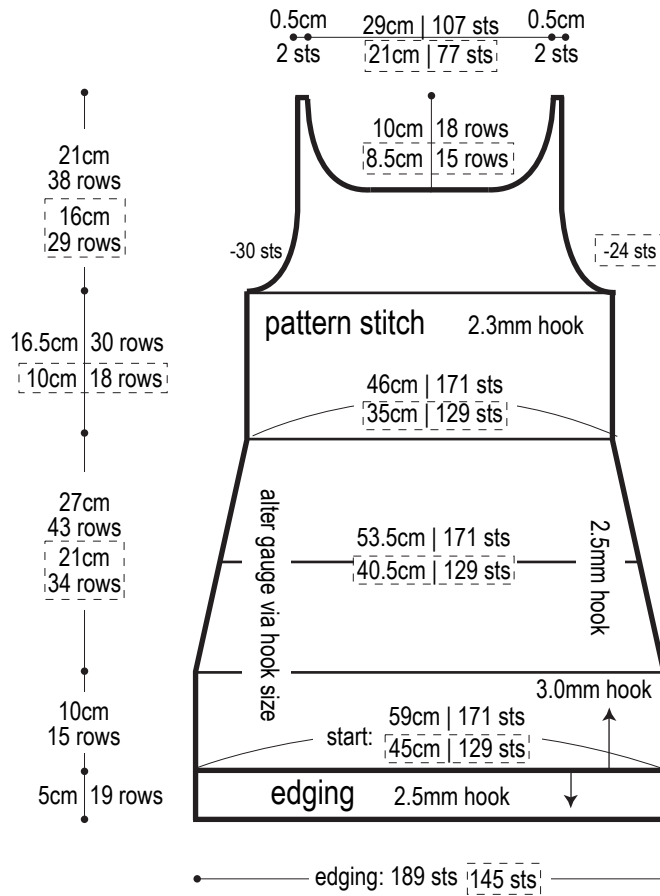
[] = kids' size

※Where only one set of numbers is provided, it refers to both sizes.

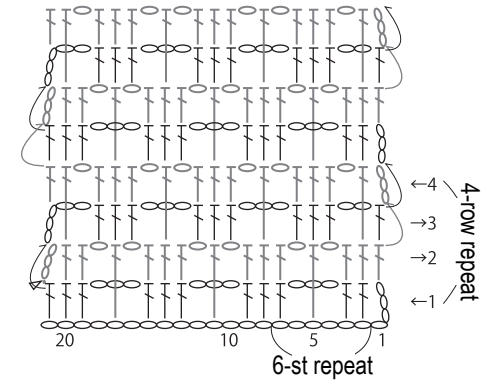
Back



Front



Pattern stitch

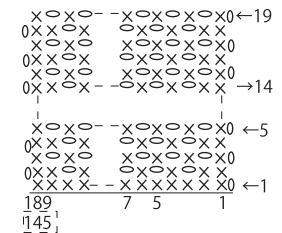


Color sequences

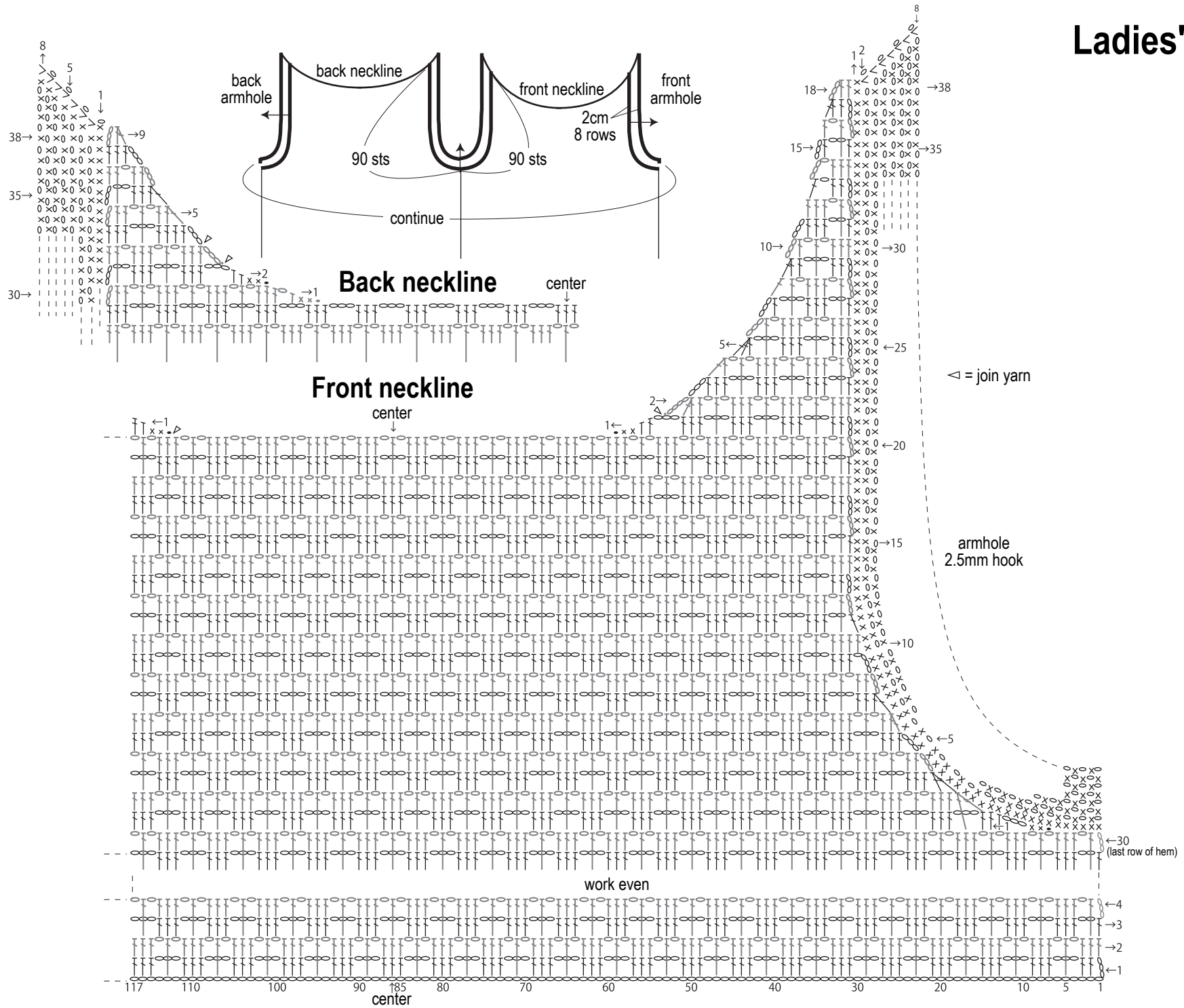
	ladies' size	kids' size
—	#05 dark navy	#02 ink blue
—	#07 deep green	#01 off-white
edging	#05 dark navy	#02 ink blue

Hem edging

2.5mm hook



Ladies' size



Kids' size

