

# 215aw-13 Duckbill Scarf



## Suggested yarn:

- Pierrot Yarns Zakka Acrylic Namibuto [100% acrylic; 77 yds/70m per 0.88 oz./25g skein];
  - version A (platypus): color #106 carrot orange, 1 skein [10g]
  - version B (duck): color #101 creamed corn, 1 skein [10g]
- version A (platypus) only: Pierrot Yarns Arles Fingering [100% alpaca; 117 yds/107m per 1.06 oz./30g skein]; color #08 light beige, 2 skeins [50g]
- version A (platypus) only: Pierrot Yarns Arles DK [100% alpaca; 133 yds/122m per 1.76 oz./50g skein]; color #02 milk caramel, 3 skeins [120g]
- Pierrot Yarns Savon [100% nylon; 61 yds/56m per 1.41 oz./40g skein];
  - version A (platypus): color #03 bitter brown, 1 skein [15g]
  - version B (duck):
    - color #10 wisteria mist, 1 skein [15g]
    - color #12 black, 1 skein [15g]
- version A (platypus) only: Pierrot Yarns Rabbits [43% mohair, 41% acrylic, 16% nylon; 63 yds/58m per 1.41 oz./40g skein]; color #05 barbara, 1 skein [15g]
- version B (duck) only: Pierrot Yarns Fontaine [80% wool, 20% alpaca; 103yds/94m per 1.41oz/40g skein];
  - color #01 vanilla, 1 skein [small amount]
  - color #02 greige, 1 skein [95g]
  - color #08 tale green, 1 skein [10g]

## Tools/Notions:

- 4.2mm (approx. US 6) and 8.0mm (approx. US 11) knitting needles or size necessary to achieve gauge
- small piece of black felt for eyes

## Finished measurements:

- version A (platypus):
  - width 10cm/3.94"
  - length 150cm/59.06"
- version B (duck):
  - width 10cm/3.94"
  - length 156.5cm/61.61"

## Gauge (10cm/4" square):

- version A (platypus): garter stitch: 18 sts and 26.5 rows
- version B (duck): garter stitch: 18 sts and 25 rows

*Gauge may vary according to individual knitting style. Change needle size if necessary to achieve gauge. Alternatively, rework pattern with your own gauge measurements.*

## Summary

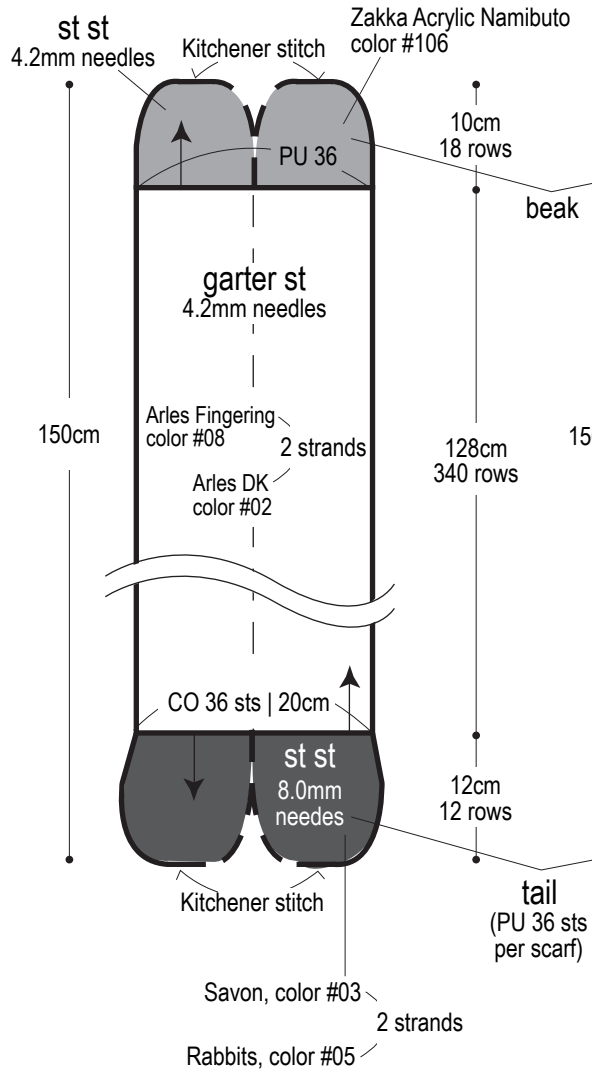
**Body:** Cast on with long-tail cast-on method. Work in garter stitch. Continue in stockinette stitch for beak.

**Finishing:** Pick up stitches at cast-on edge; work tail in stockinette stitch. With wrong sides facing each other, seam sides with mattress stitch. Seam beak and tail ends, respectively, with Kitchener stitch. Cut round felt pieces for eyes; fasten to head area with glue.

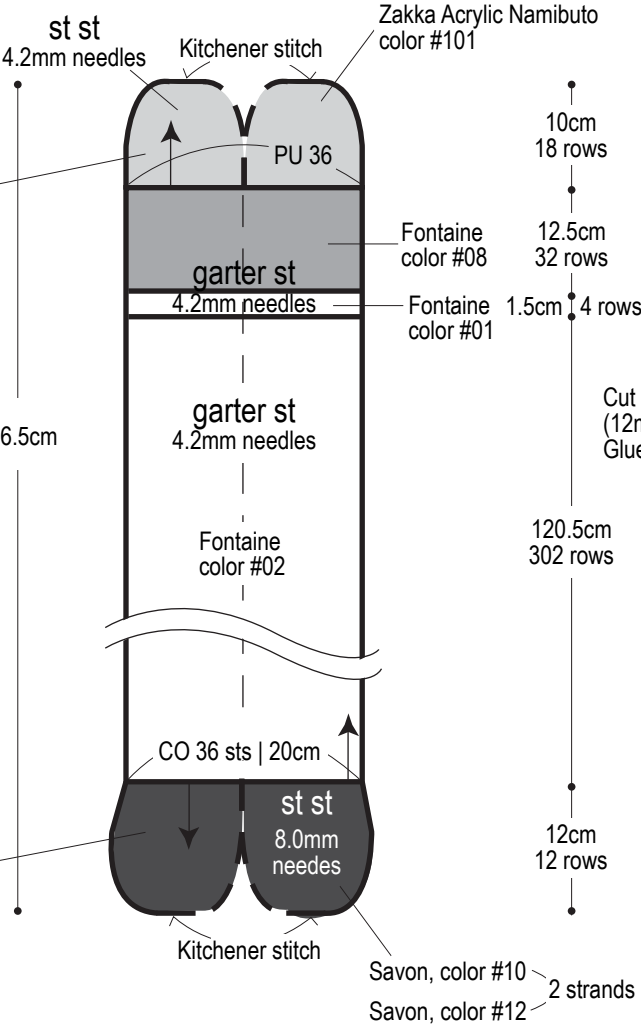
## Abbreviations:

CO = cast on      PU = pick up      st st = stockinette stitch

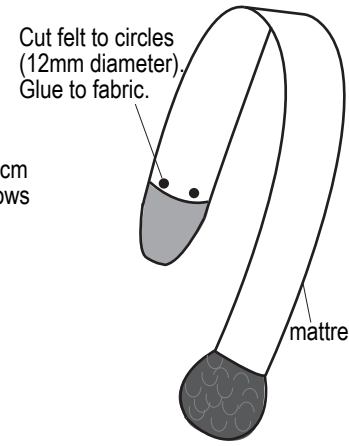
### Version A: Duck-billed platypus



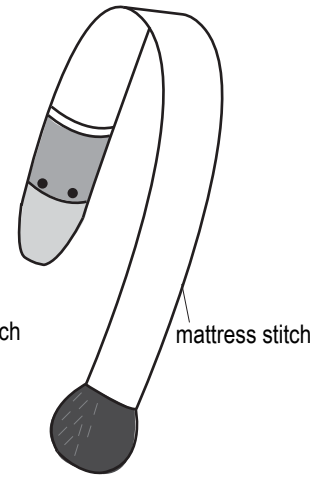
### Version B: Khaki campbell duck



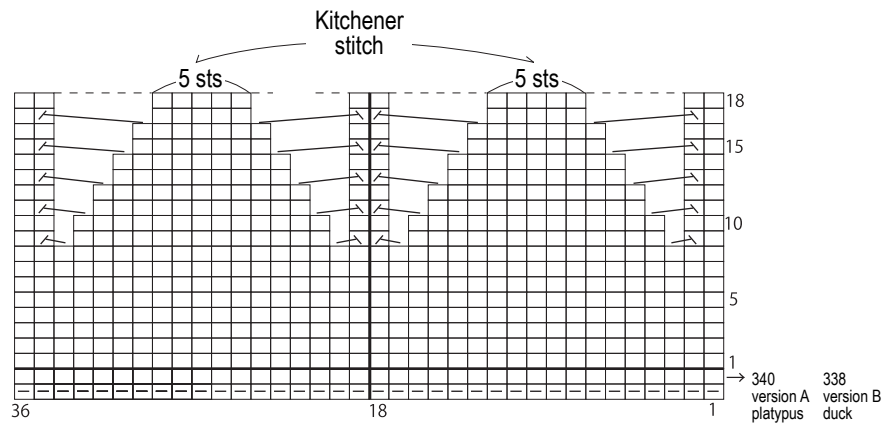
### Version A: platypus



### Version B: duck



# Beak



# Tail

