

526pmc Pastel Lace Placemat & Coasters



Suggested yarn:

- Pierrot Yarns Pastel Lace [100% cotton; 339 yds/310m per 1.41 oz./40g skein];
 - color #7 lavender gray/cyan green/baby blue/princess blue gradation, 1 skein [30g]
 - color #12 aqua blue, 1 skein [30g]

Tools/Notions:

- 1.25mm (approx. US Steel Hook #10) crochet hook or size necessary to achieve gauge

Finished measurements:

- placemat:
 - height 30cm/11.81"
 - width 45cm/17.71"
- coaster:
 - height 10cm/3.94"
 - width 10cm/3.94"

Gauge (10cm/4" square):

- motif: 5cm/1.97" square

Gauge may vary according to individual crochet style. Change hook size if necessary to achieve gauge. Alternatively, rework pattern with your own gauge measurements.

Summary

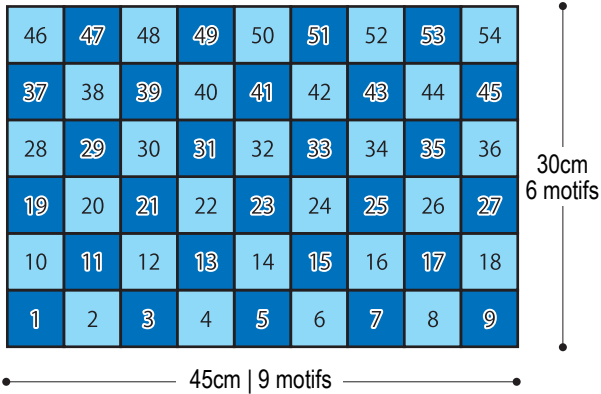
Placemat & coasters: ch5 and join into the round. Referring to chart, crochet motif. Starting from second motif, join motifs together on the last round using slip stitch. Refer to schematics for color sequences.

✳️**Note:** yarn amounts listed are for one placemat and two coasters.

Abbreviations:

ch = chain stitch

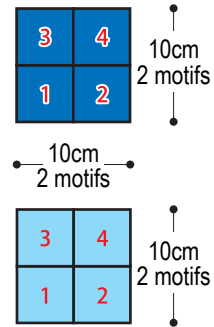
Placemat 1.25mm hook



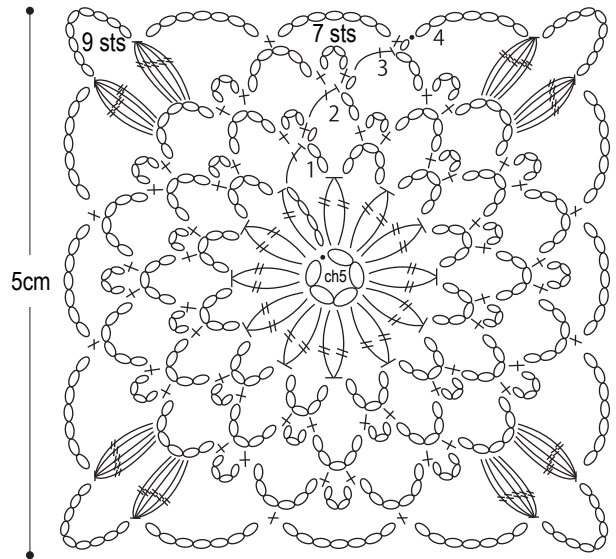
Placemat: 27 motifs 27 motifs

Coasters (2): 4 motifs 4 motifs

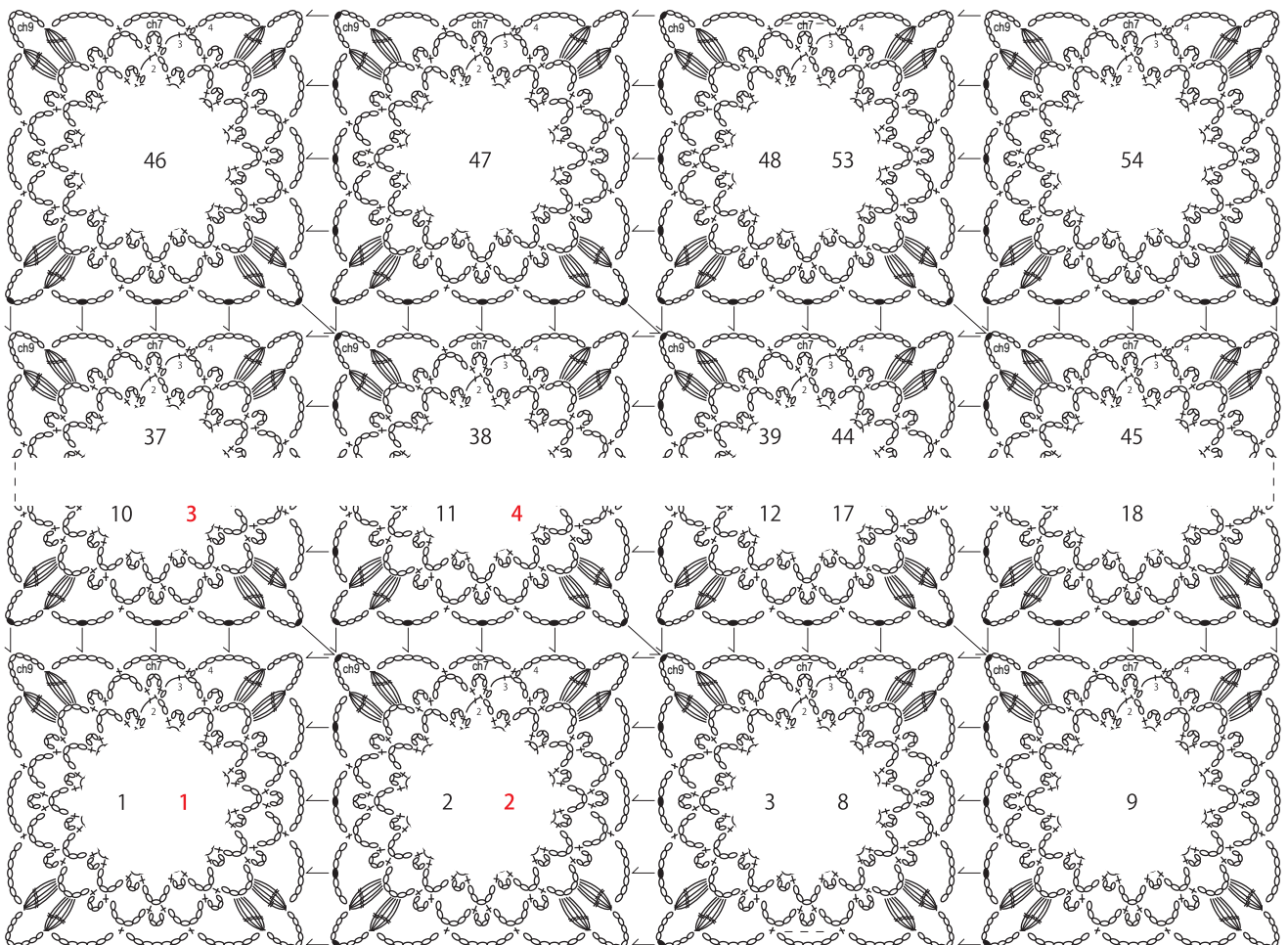
Coasters 1.25mm hook



Motif 1.25mm hook



Motif joining method 1.25mm hook



※Black numbers refer to order of joining for placemat. Red numbers refer to coaster.