

215ss-17 Ankle Cuff Socks



Suggested yarn:

- Pierrot Yarns Julien [95% silk, 5% polyester; 192 yds/176m per 1.41 oz./40g skein];
 - version A: color #71 ivory, 2 skeins [55g]
 - version B: color #76 powder pink beige, 2 skeins [55g]

Tools/Notions:

- 2.5mm (approx. US B or C) and 3.0mm (approx. US C or D) crochet hook or sizes necessary to achieve gauge
- transparent polyurethane elastic reinforcement thread

Finished measurements:

- mouth of sock (circumference) 11cm/4.33"
- foot length 21cm/8.27"

Gauge:

- pattern stitch: 1 repeat = 2.8cm/1.10" wide and 12.5 rounds = 10cm/4" tall

Gauge may vary according to individual crochet style. Change hook size if necessary to achieve gauge. Alternatively, rework pattern with your own gauge measurements.

Summary

✦**Note:** Work shaded areas with reinforcement thread held together with yarn.

ch8 to begin, and begin working in the round from toe up. Work reinforcement thread together with yarn when indicated. Leave hole open at heel, then continue working rest of sock. After binding off cuff, work afterthought heel.

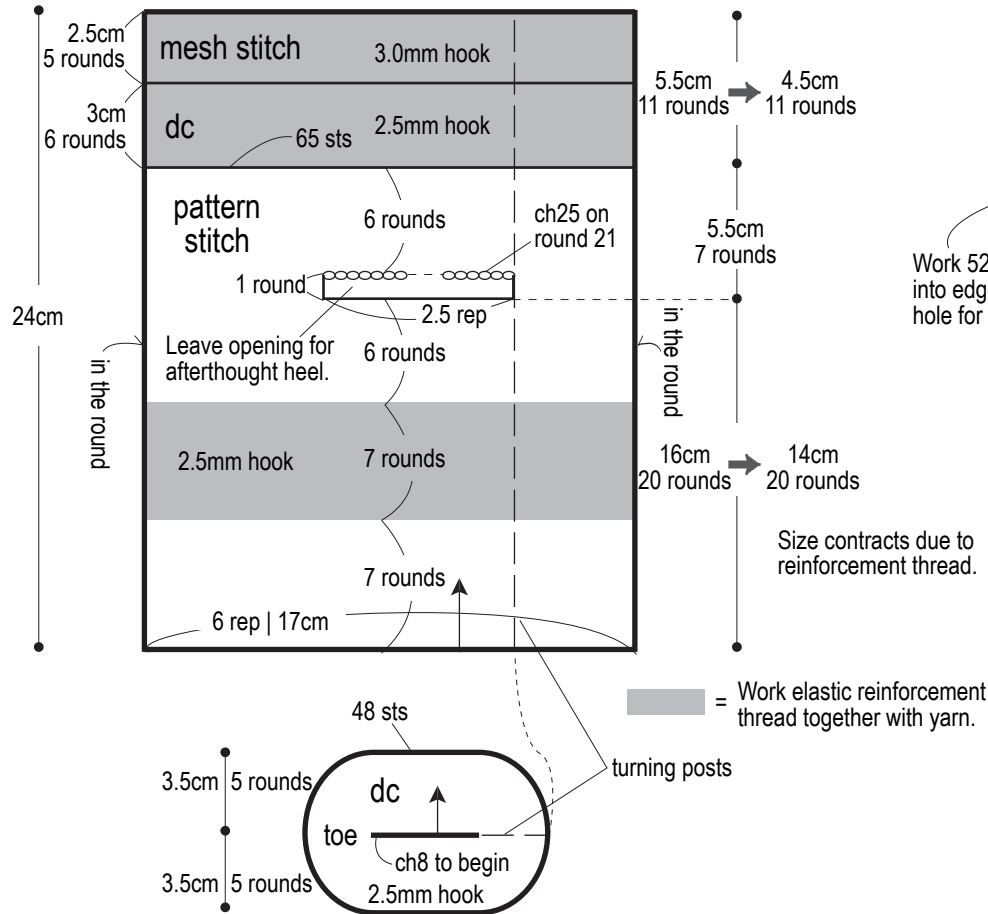
Abbreviations:

ch = chain

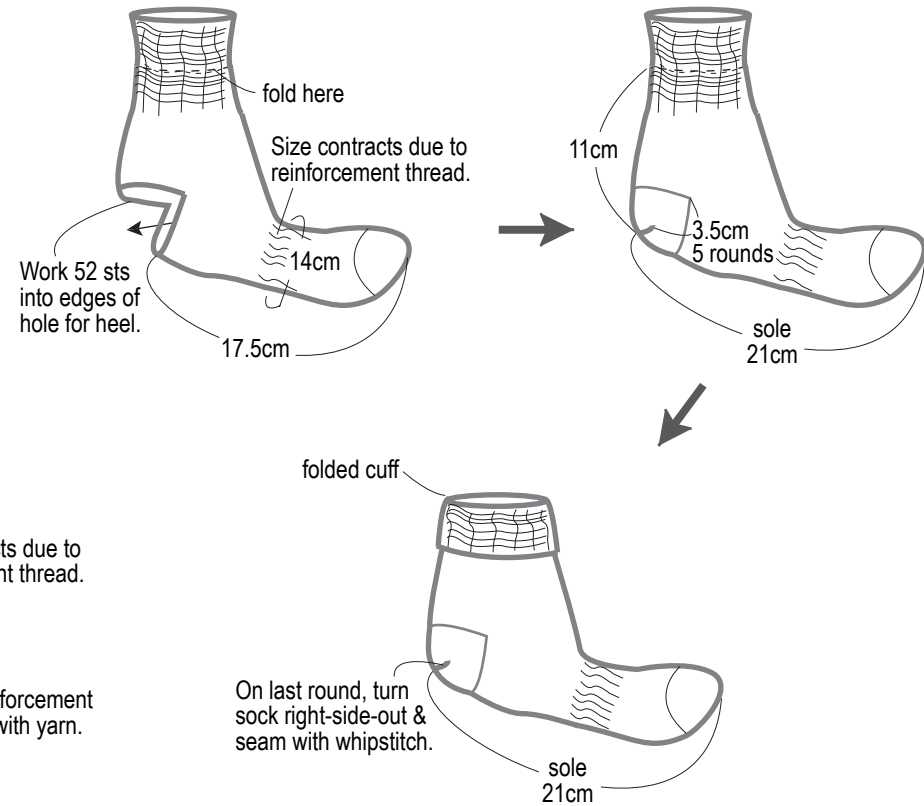
dc = double crochet (US)

rep = pattern repeat(s)

Sock schematic

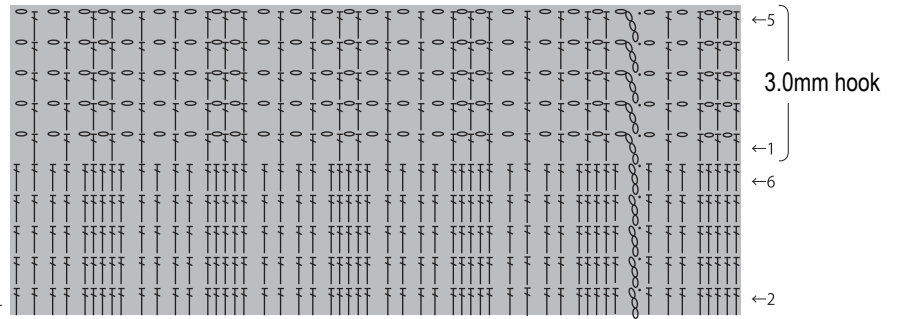
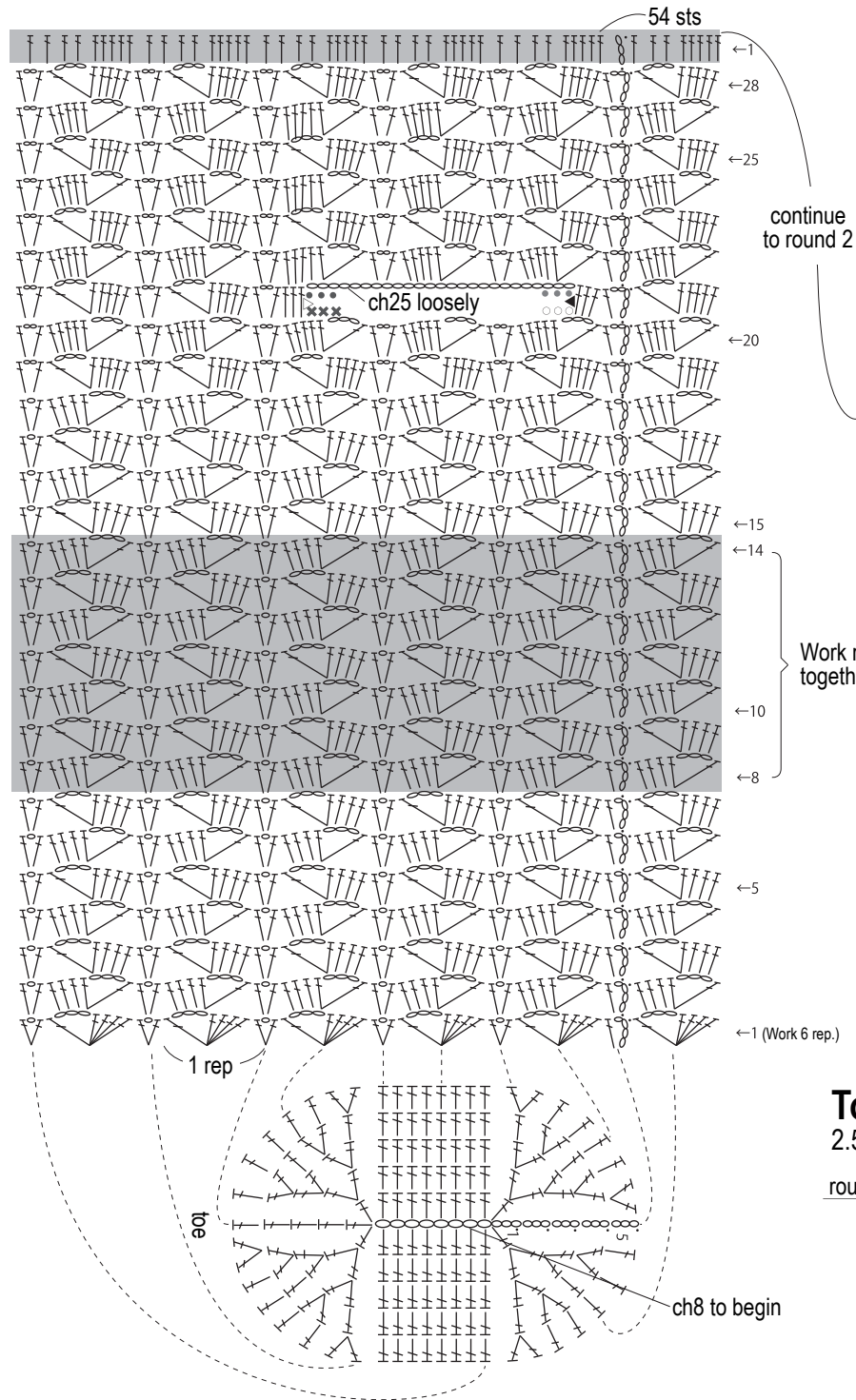


Afterthought heel

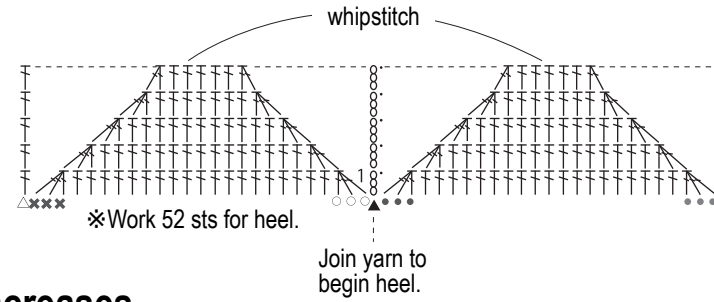


※Because elastic reinforcement thread is used, the finished size may be smaller than shown. When you put the sock on, it will stretch back to the appropriate size.

Sock
2.5mm hook



Afterthought heel
2.5mm hook



Toe increases
2.5mm hook

round no.	stitch count
5	48 (+6)
4	42 (+8)
3	34 (+8)
2	26 (+4)
1	22
	ch8 to begin