

214w-22 Drops Cap



Suggested yarn:

- Pierrot Yarns Fine Merino [100% merino; 103yds/94m per 1.06oz/30g skein];
 - version A (kids' size):
 - color #215 light terra cotta, 2 skeins [50g]
 - color #223 saffron yellow, 1 skein [20g]
 - version B (ladies' size):
 - color #220 gray, 2 skeins [50g]
 - color #227 vanilla beige, 1 skein [20g]
 - version C (ladies' size):
 - color #205 deep navy, 2 skeins [50g]
 - color #208 aqua green, 1 skein [20g]

Tools/Notions:

- 3.0mm (US 3) and 3.6mm (approx. US 5) knitting needles or sizes necessary to achieve gauge

Finished measurements:

- version A (kids' size):
 - head circumference 49cm/19.29"
 - height 21.5cm/8.46"
- versions B & C (ladies' size):
 - head circumference 53.5cm/21.06"
 - height 25cm/9.84"

Gauge (10cm/4" square):

- pattern stitch (with 3.6mm knitting needles): 25 sts and 29 rows

Gauge may vary according to individual knitting style. Change needle size if necessary to achieve gauge. Alternatively, rework pattern with your own gauge measurements.

Summary

Cap: Cast on with long-tail cast-on method. Work in k1p1 ribbing, then continue in stranded pattern stitch. Work evenly spaced decreases as indicated to shape top of hat. Thread yarn tail through all remaining stitches; cinch top of hat shut tightly.

Finishing: Seam side of hat with mattress stitch. Make pom-pom, then seam to top of hat.

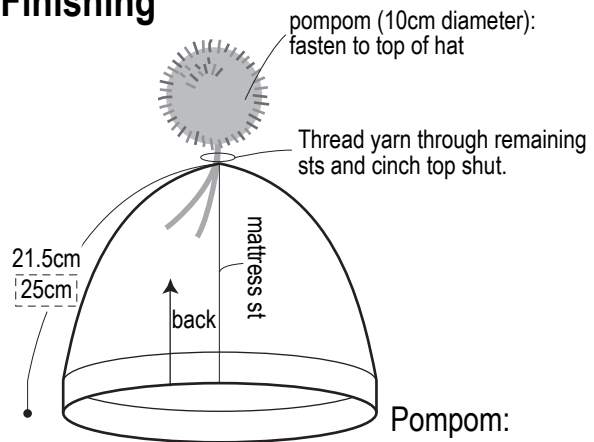
Abbreviations:

CO = cast on k = knit p = purl rep = pattern repeat(s) ssk = slip, slip, knit

##-## = rows-stitches-places-times [for evenly spaced decreases across entire width of an item]. For example, 1-2-3-4 means "every 1 row, decrease 2 stitches in each of 3 places across the row; do this 4 times total."

Version A (kids' size)

Finishing



Pom-pom:

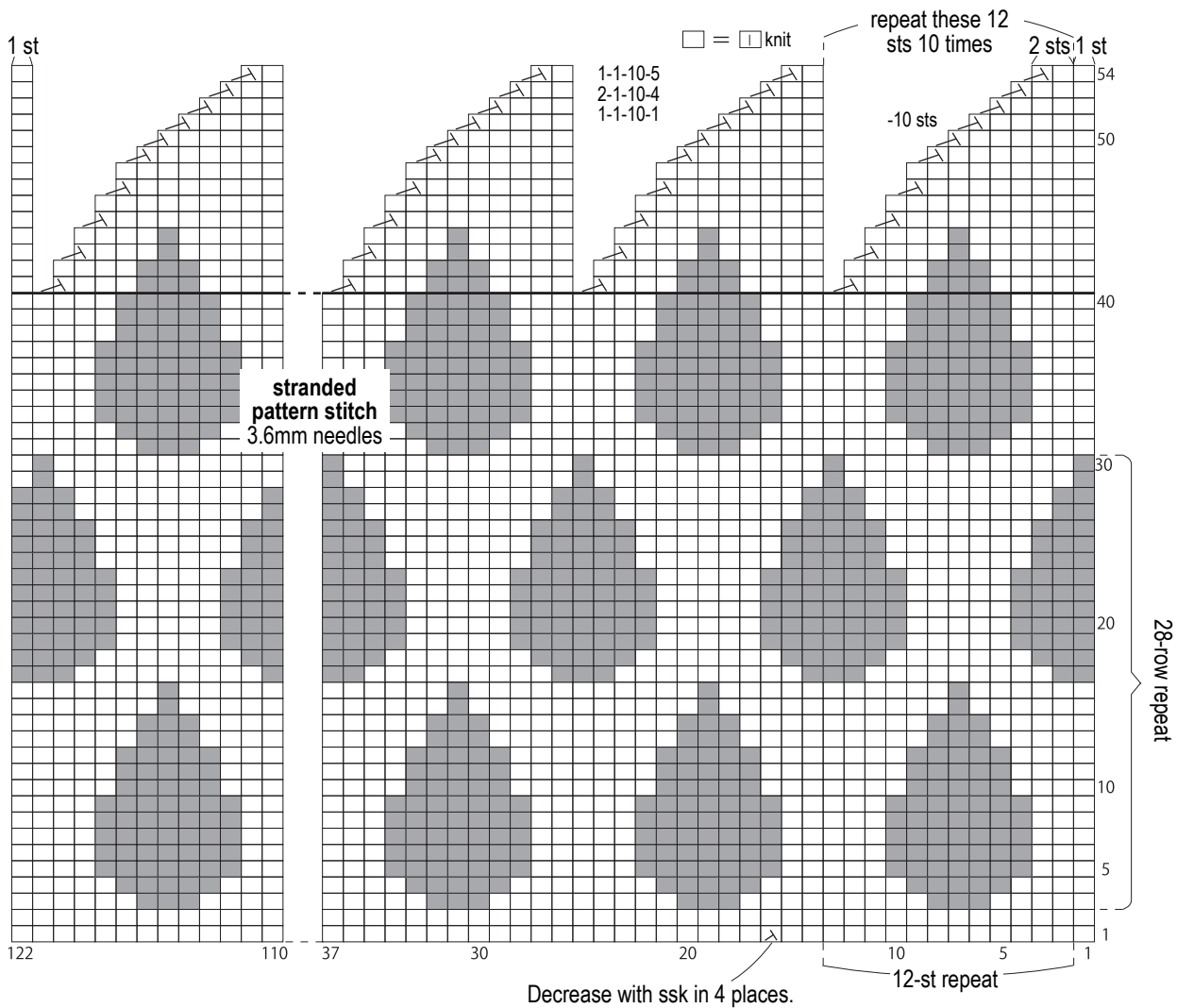
- version A: color 215 light terra cotta
- version B: color 220 gray
- version C: color 205 deep navy

49cm | 53.5cm

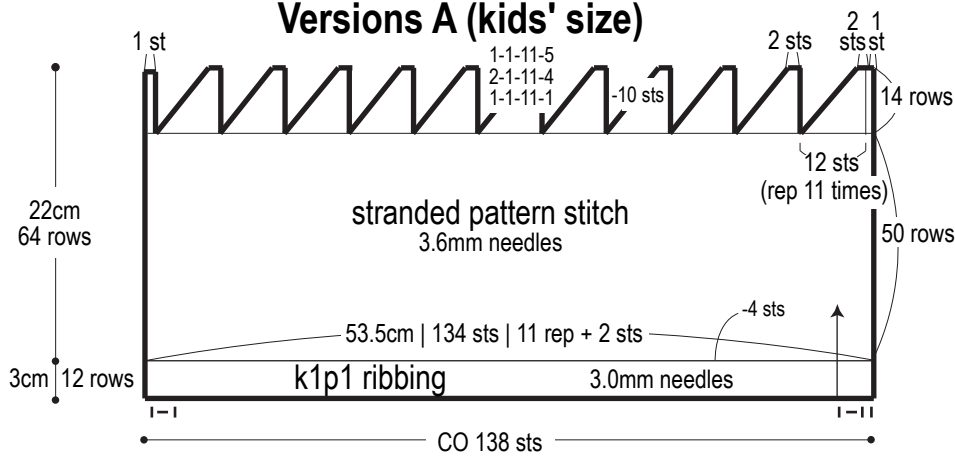
— = versions B & C

Color sequence

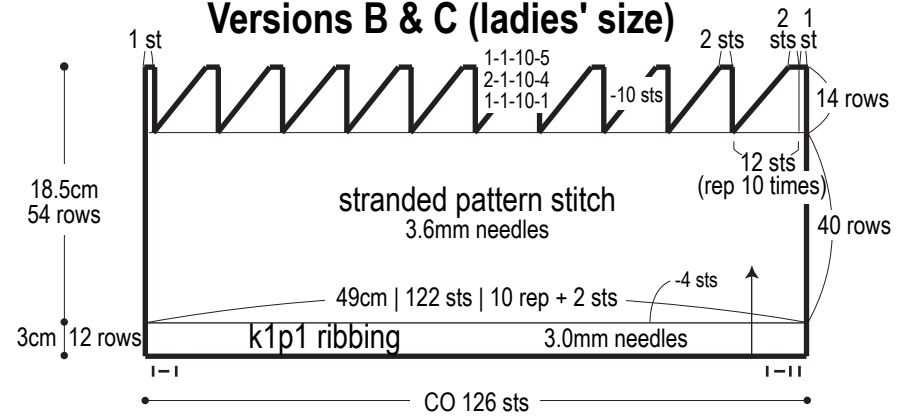
	☐ = main color	■ = drop color
version A	#215 light terra cotta	#223 saffron yellow
version B	#220 gray	#227 vanilla beige
version C	#205 deep navy	#208 aqua green



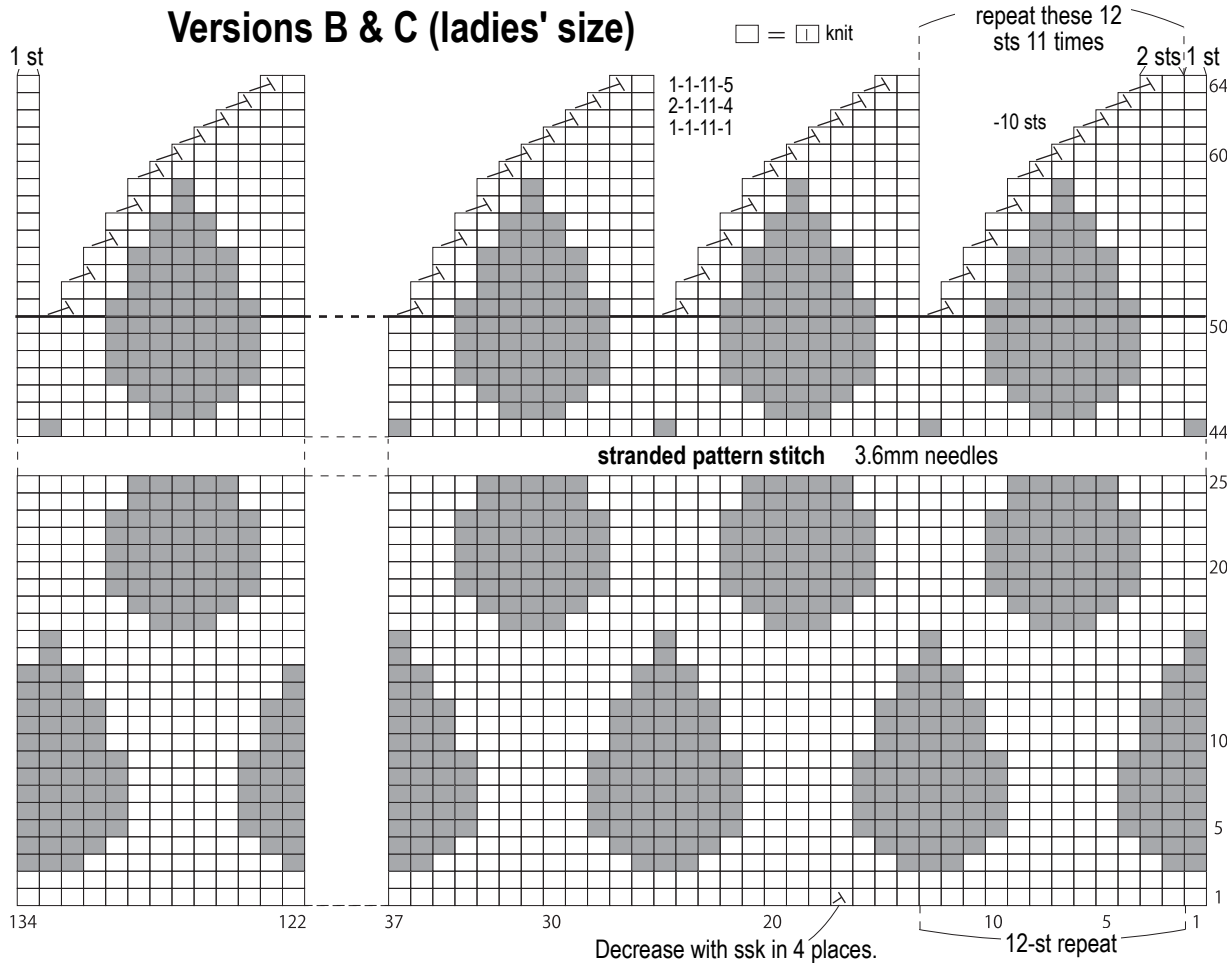
Versions A (kids' size)



Versions B & C (ladies' size)



Versions B & C (ladies' size)



Pom-pom instructions

