

214a-25 Pocket Hoodie



Suggested yarn:

- Pierrot Yarns Fontaine [80% wool, 20% alpaca; 103yds/94m per 1.41oz/40g skein]; color #02 grage, 8 skeins [305g]
- Pierrot Yarns Giselle [80% wool, 20% nylon (polyamide); 83yds/76m per 1.41oz/40g skein];
 - color #01 cobalt, 1 skein [10g]
 - color #03 maple leaf, 1 skein [5g]

Tools/Notions:

- 3.3mm (approx. US 4), 3.9mm (approx. US 6), and 5.1mm (approx. US 8) knitting needles or sizes necessary to achieve gauge
- 3.3mm (approx. US 4) double-pointed knitting needles or size necessary to achieve gauge
- 3.0mm (approx. US C or D) crochet hook or size necessary to achieve gauge
- bodkin for inserting cord into hoodie edging

Finished measurements:

- chest 75cm/29.53"
- center back neck-to-cuff 23.5cm/9.25"
- back length 47cm/18.50"

Gauge (10cm/4" square):

- garter stitch (with 3.3mm needles): 23 sts and 36 rows
- pattern stitch A: 23 sts and 35 rows
- pattern stitch B: 17 sts and 26 rows

Gauge may vary according to individual knitting style. Change needle size if necessary to achieve gauge. Alternatively, rework pattern with your own gauge measurements.

Summary

Back & front: Cast on with long-tail cast-on method. Work in garter stitch, then continue in pattern stitch A. When finished, place all stitches on stitch holder (do not bind off).

Pocket: Cast on with long-tail cast-on method. Work in pattern stitch B. Pick up stitches from sides (where decreases were) and work edging in garter stitch.

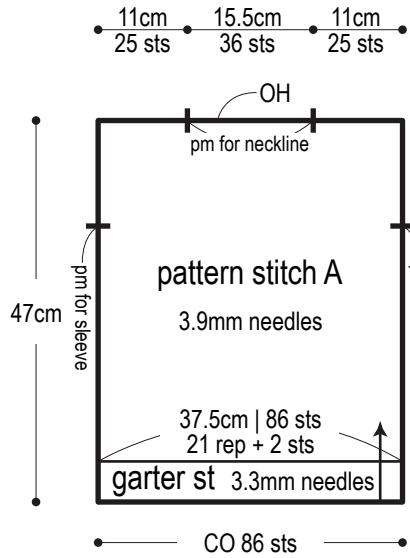
Finishing: Seam shoulders with crochet slip stitch seam. Pick up stitches from armhole; work garter stitch back and forth in rows. Seam sides and sleeve undersides with mattress stitch. For hood, pick up live stitches at neckline; work in pattern stitch A. When finished, seam top of hood together with wrong sides facing each other using three-needle bind-off. Pick up stitches along front neckline and hood edge; work edging (which is also the casing for the drawstring cord) in garter stitch, working eyelets for cord where indicated. Bind off. Fold casing to inside; whipstitch to inside of hood. Seam pocket to front with whipstitch. Crochet cord, then insert into casing using bodkin. Tie a knot in each end of cord.

Abbreviations:

BO = bind off ch = chain stitch CO = cast on OH = on hold (place on stitch holder) pm = place marker PU = pick up RE = row(s) even #-#-# = rows-stitches-times

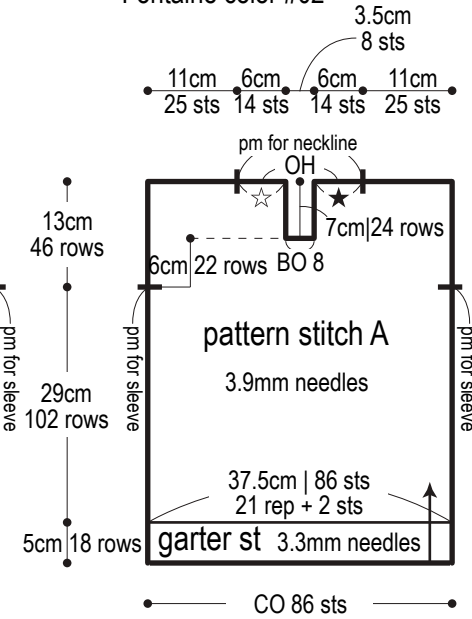
Back

Fontaine color #02



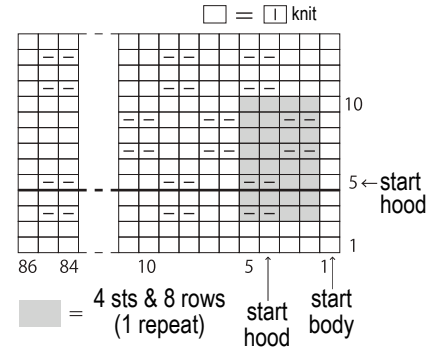
Front

Fontaine color #02



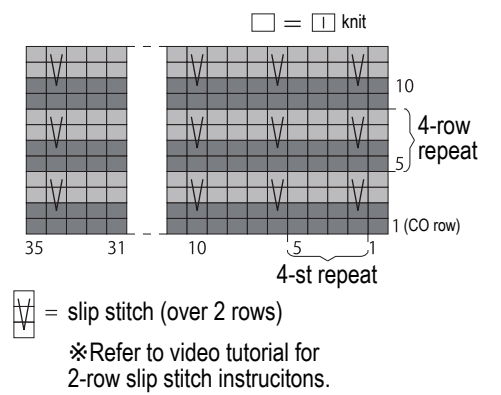
Pattern stitch A

3.9mm needles



Pattern stitch B

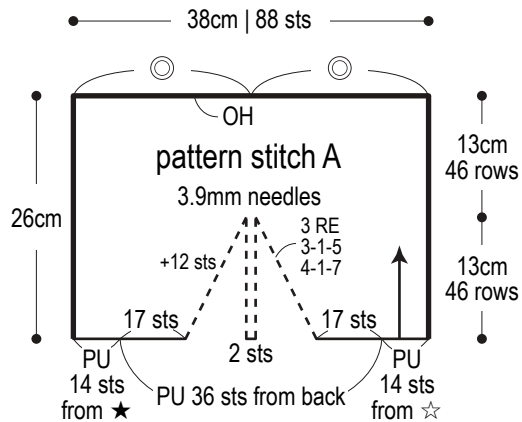
5.1mm needles



- = Fontaine, color #02 grage
- = Giselle, color #01 cobalt
- = Giselle, color #03 maple leaf

Hood

Fontaine color #02



Pocket

Giselle colors #01 and #03
5.1mm needles

