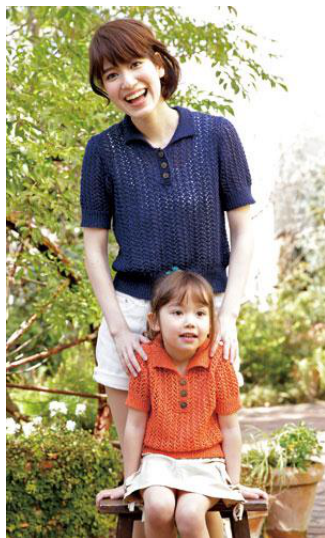


214s-23 Polo Sweater



Suggested yarn:

- Pierrot Yarns Marshmallow Cotton [100% cotton; 153yds/140m per 1.06oz/30g skein];
 - kids' size: color #04 orange, 3 skeins [90g]
 - ladies' size: color #02 navy, 6 skeins [155g]

Tools/Notions:

- 2.7mm (approx. US 2) knitting needles or size necessary to achieve gauge
- 3.0mm (US 3) knitting needle or size necessary to achieve gauge
- 3 buttons (15mm/0.59") per sweater

Finished measurements:

- | | | | |
|--------------------------------|------------------------------|----------------------------------|----------------------------|
| • Kids' size: | | • Ladies' size: | |
| • chest 70cm/27.56" | • back length 38cm/14.96" | • bust 91cm/35.83" | • back length 50cm/19.69" |
| • cross back width 27cm/10.63" | • sleeve length 15.5cm/6.10" | • cross back width 35.5cm/13.98" | • sleeve length 23cm/9.06" |

Gauge (10cm/4" square):

- pattern stitch: 23.5 sts and 37 rows
- k1p1 ribbing: 26 sts and 34 rows

Gauge may vary according to individual knitting style. Change needle size if necessary to achieve gauge. Alternatively, rework pattern with your own gauge measurements.

Summary

Back: Cast on with crochet provisional cast-on method. Work in pattern stitch. Shape armscye and neckline by binding off stitches and working decreases at edges where indicated.

Front: Work as for back, but when you reach the front neckline, begin working right and left sides separately. Pick up stitches along V-neck edge; work buttonband in k1p1 ribbing. Work buttonholes in right band only.

Sleeves: Cast on as for body, then work in pattern stitch. Shape sides of sleeve by increasing with lifted increase. Shape sleeve cap by binding off stitches and working decreases at edges where indicated.

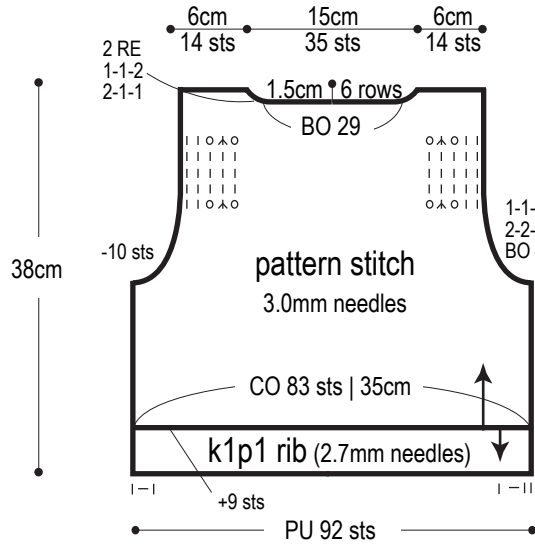
Finishing: Seam shoulders with crochet slip stitch seam. Pick up stitches along neckline and top edge of button (half of the stitches only -- see collar schematic); work collar in k1p1 ribbing. Remove provisional cast-on edge from hem and cuffs; work hem and cuff edging in k1p1 ribbing. Bind off edging in pattern. Seam sides of body and sleeve undersides, respectively, with mattress stitch. Seam sleeves to body with crochet slip stitch seam. Fasten buttons to left buttonband.

Abbreviations:

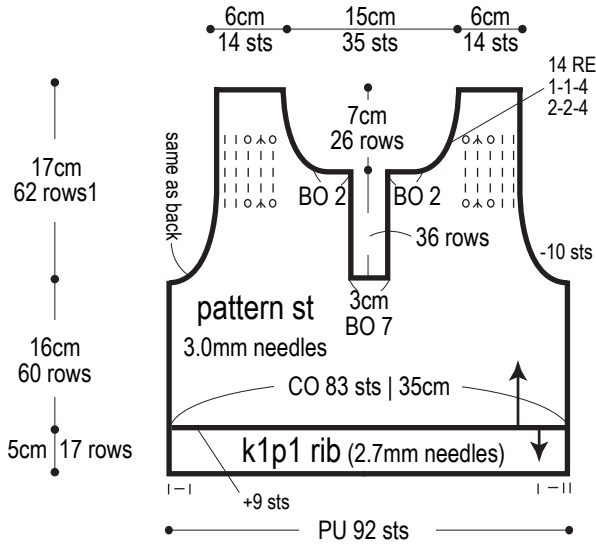
BO = bind off CO = cast on PU = pick up RE = row(s) even #-#-# = rows-stitches-times

Kids' size

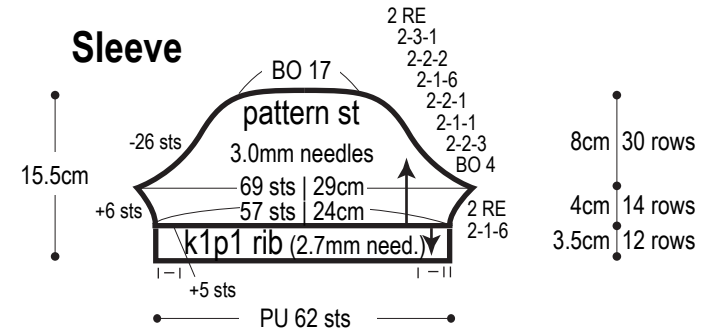
Back



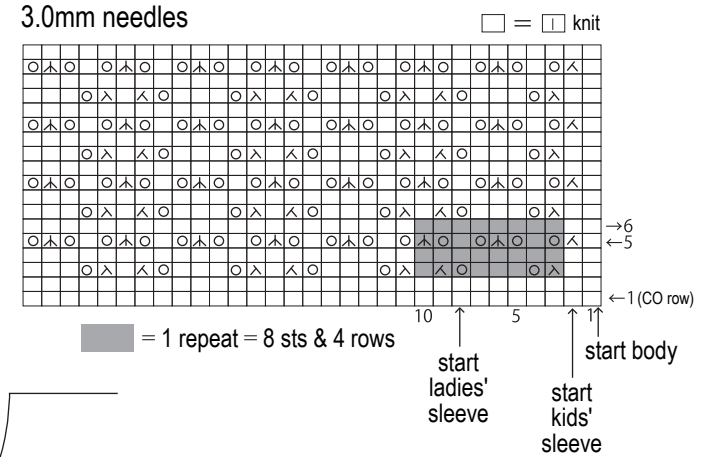
Front



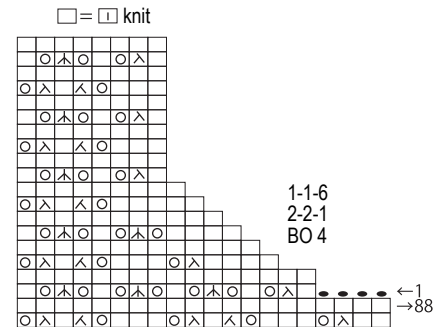
Sleeve



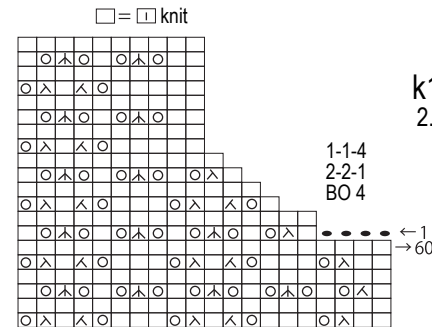
Pattern stitch



Ladies' armscye

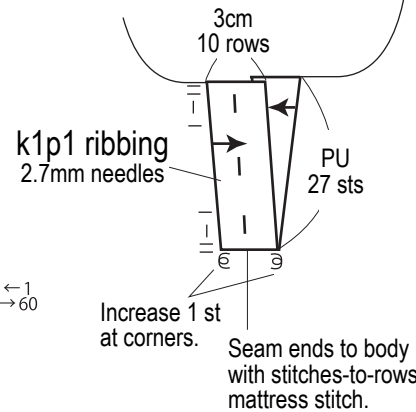


Kids' armscye



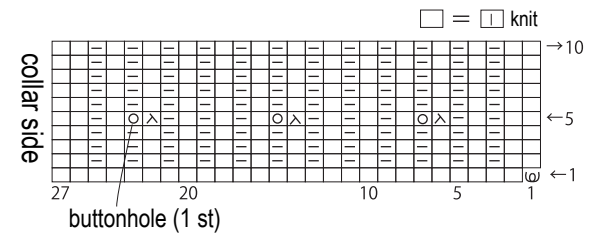
Buttonband

(same for both sizes)



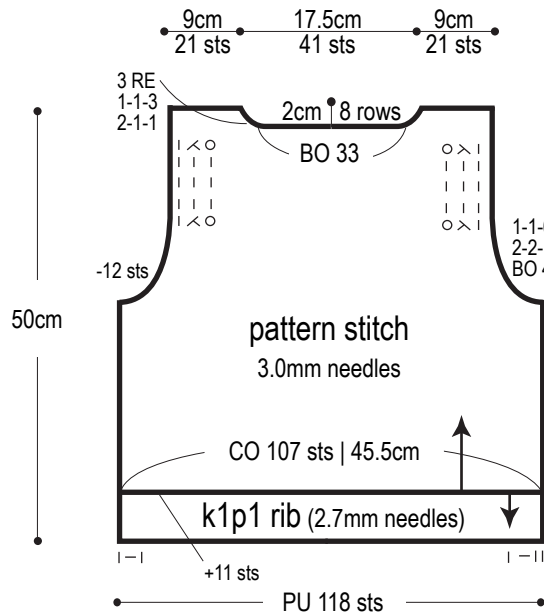
Right buttonband & buttonholes

2.7mm needles; same for both sizes

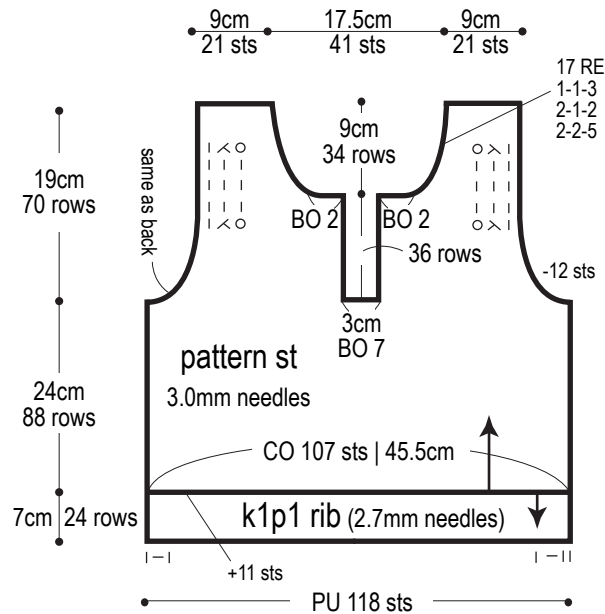


Ladies' size

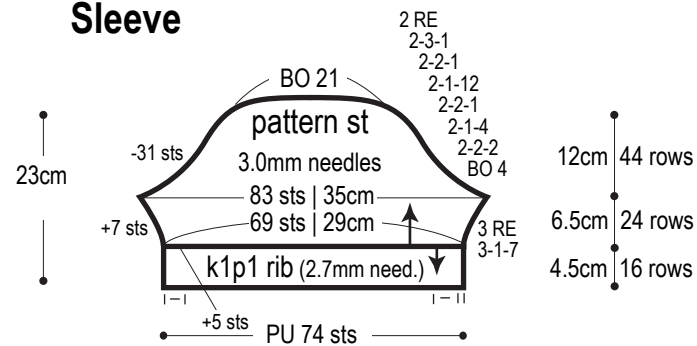
Back



Front

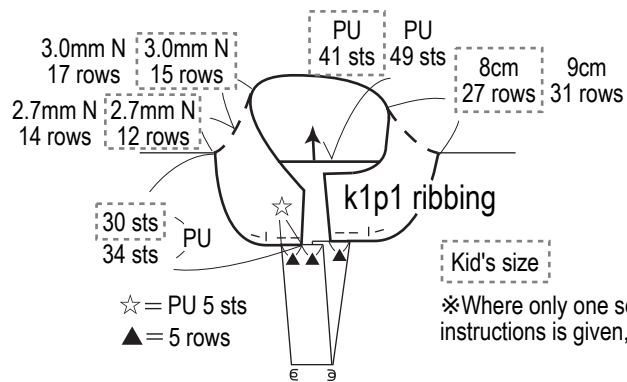


Sleeve



Collar

N = needles



※Where only one set of measurements/ instructions is given, it refers to both sizes.