

213fw-29 A-line Pullover



Suggested yarn:

- Pierrot Yarns Fine Merino [100% extra fine merino; 103 yds/94m per 1.06 oz./30g skein];
 - girls' size: color #225 Nile green, 3 skeins [155g]
 - ladies' size: color #212 old rose, 3 skeins [260g]
- Pierrot Yarns Cutie Mohair [30% nylon, 28% mohair, 28% acrylic, 14% wool; 339 yds/310m per 0.88 oz./25g skein];
 - girls' size: color #38 turquoise, 4 skeins [80g]
 - ladies' size: color #34 pink, 6 skeins [130g]

Tools/Notions:

- 3.9mm (approx. US 6) and 4.5mm (US 7) straight knitting needles or sizes necessary to achieve gauge
- 3.9mm (approx. US 6) double-pointed knitting needles or size necessary to achieve gauge

Finished measurements:

- | | | | |
|--------------------------------|-------------------------------|----------------------------------|-------------------------------|
| • girls' size: | | • ladies' size: | |
| • bust 72cm/28.35" | • back length 39.5cm/15.55" | • bust 90cm/35.43" | • back length 57.5cm/22.64" |
| • cross back width 27cm/10.63" | • sleeve length 36.5cm/14.37" | • cross back width 34.5cm/13.58" | • sleeve length 53.5cm/21.06" |

Gauge (10cm/4" square):

- stockinette stitch & pattern stitch: 18 sts and 25 rows

Gauge may vary according to individual knitting style. Change needle size if necessary to achieve gauge. Alternatively, rework pattern with your own gauge measurements.

Knitting Tips

✳️ **Note:** entire garment worked with 2 strands of yarn held together (1 strand of Fine Merino and 1 strand of Cutie Mohair).

Body: Cast on with crochet chain cast-on (using the same color for the chain as for the garment). Work in stockinette stitch, picking up stitches from crochet chain while working short rows. For front body only, knit ☆ side first, then join with 10th row (8th row for girls' size) of ★ side. Starting from the location indicated, work in pattern stitch. Pick up stitches from cast-on edge at hem; work edging in k1p1 ribbing. Bind off in pattern.

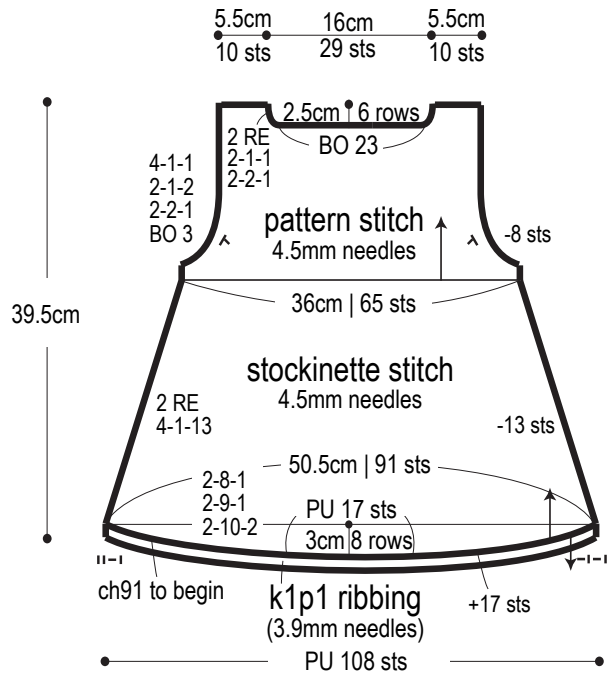
Sleeves: Cast on as for body. Work in pattern stitch. Seam sleeve undersides with mattress stitch. Pick up stitches from cuff edge; work cuff in k1p1 ribbing in the round. Bind off in pattern.

Finishing: Seam shoulders with crochet slip stitch seam. Seam sides with mattress stitch. Pick up stitches around neckline, then work collar edging in k1p1 ribbing in the round. Bind off in pattern as for body. Seam sleeves to body with crochet slip stitch seam.

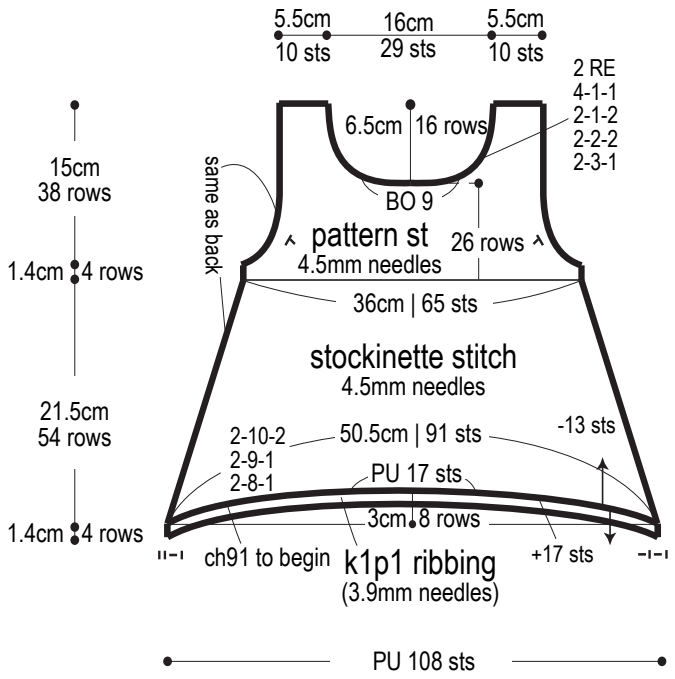
Abbreviations:

BO = bind off ch = chain stitch CO = cast on PU = pick up RE = row(s) even #-#-# = rows-stitches-times

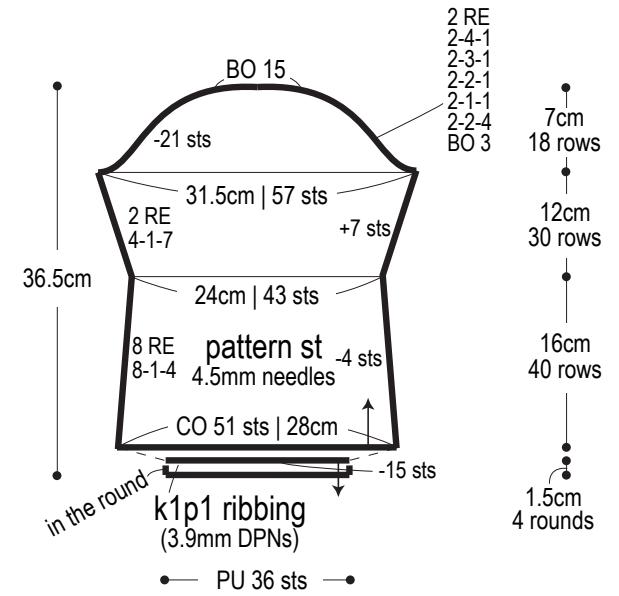
Girls' size: Back



Girls' size: Front

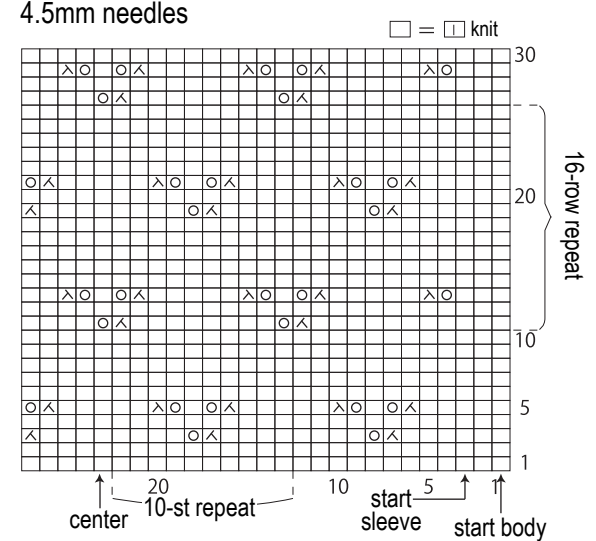


Girls' size: Sleeve



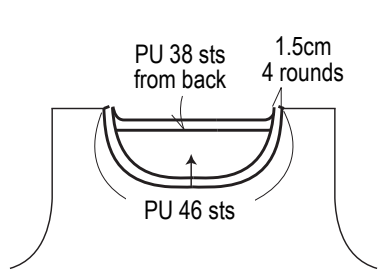
*Be sure to work cast-on crochet chain loosely.

Girls' size: Pattern stitch



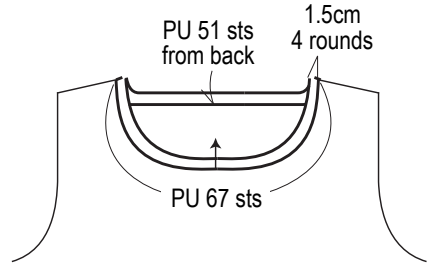
Girls' size: Neckline

k1p1 ribbing, 3.9mm DPNs

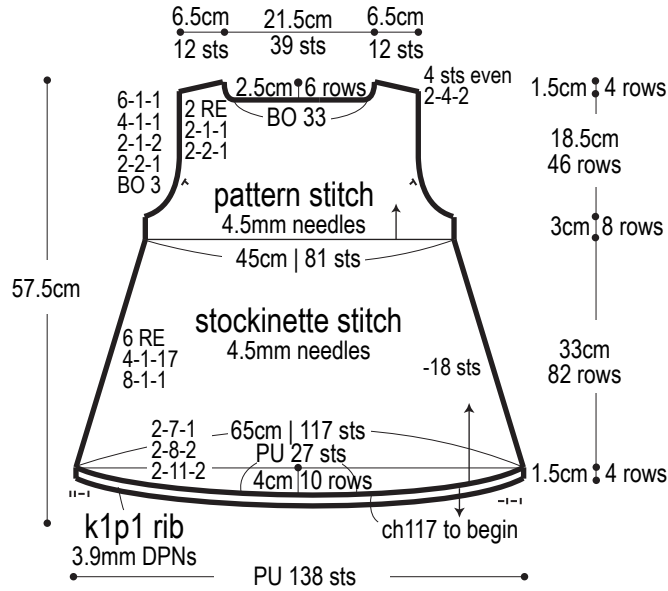


Ladies' size: Neckline

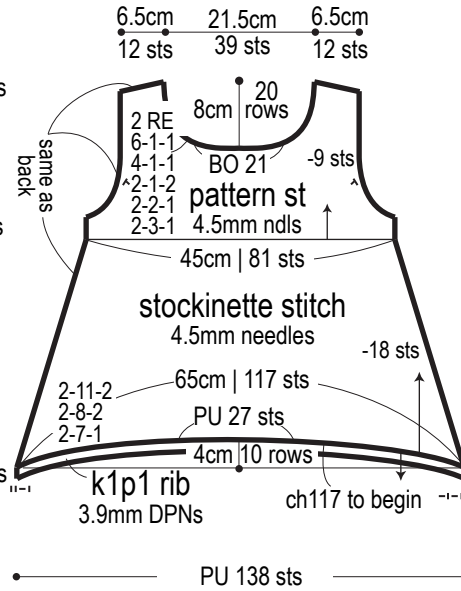
k1p1 ribbing, 3.9mm DPNs



Ladies' size: Back

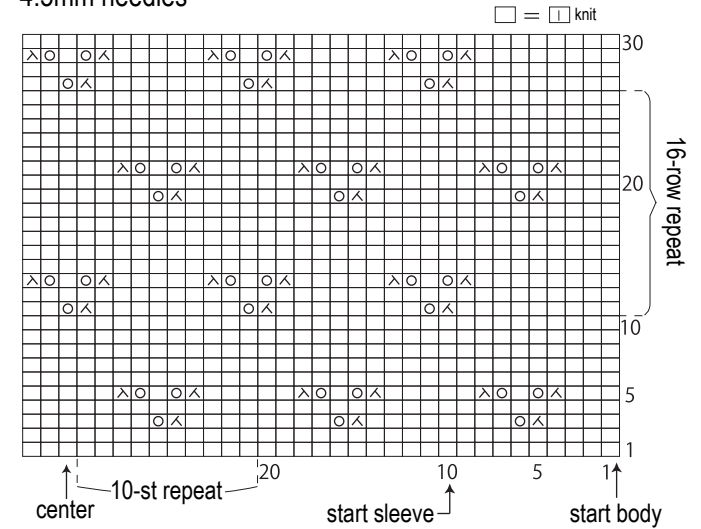


Ladies' size: Front



Ladies' size: Pattern stitch

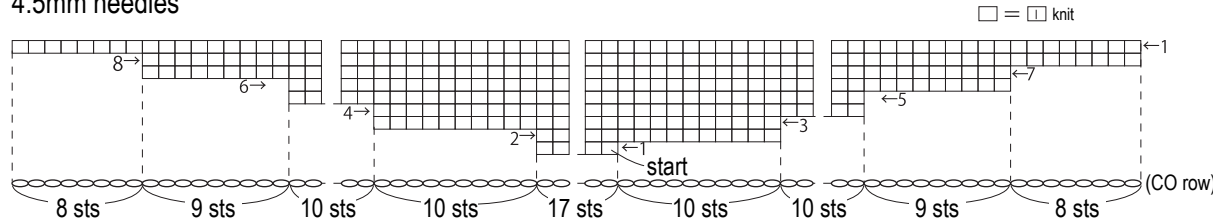
4.5mm needles



*Be sure to work cast-on crochet chain loosely.

Girls' size: How to pick up stitches for back hem

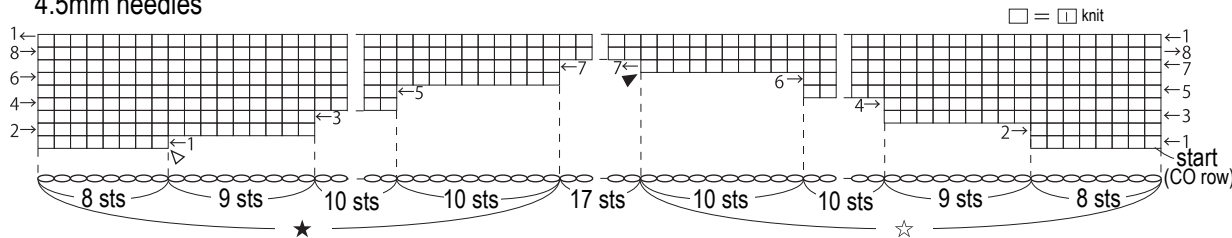
4.5mm needles



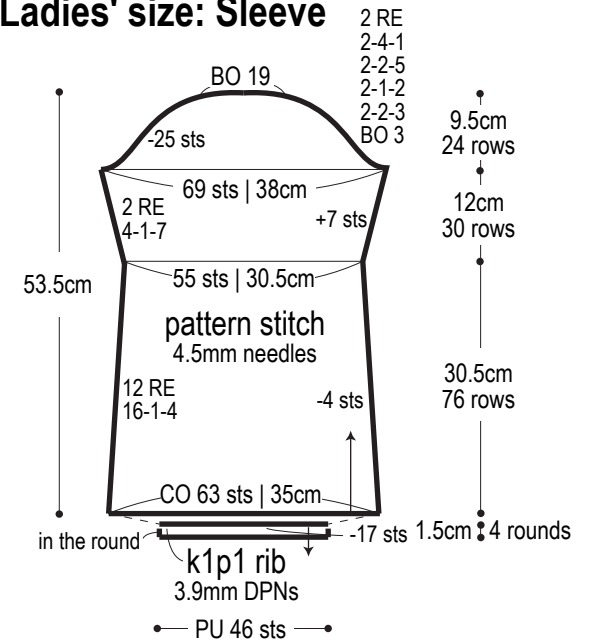
*Start picking up stitches from the 17 sts at the center.

Girls' size: How to pick up stitches for front hem

4.5mm needles

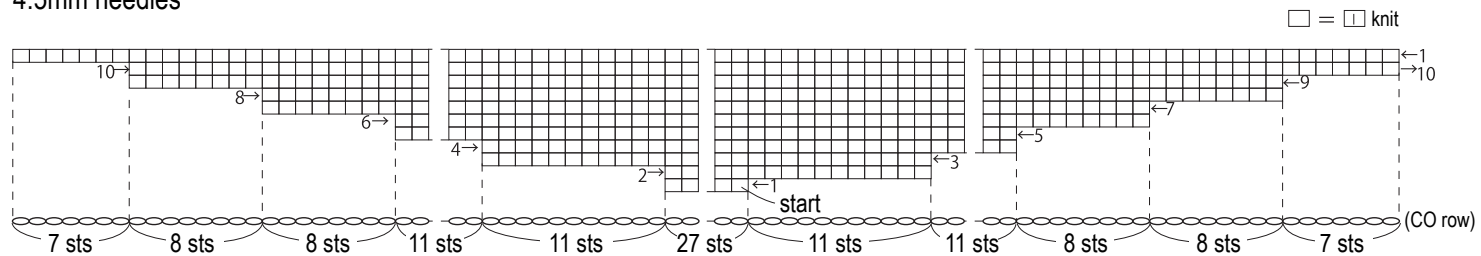


Ladies' size: Sleeve



Ladies' size: How to pick up stitches for back hem

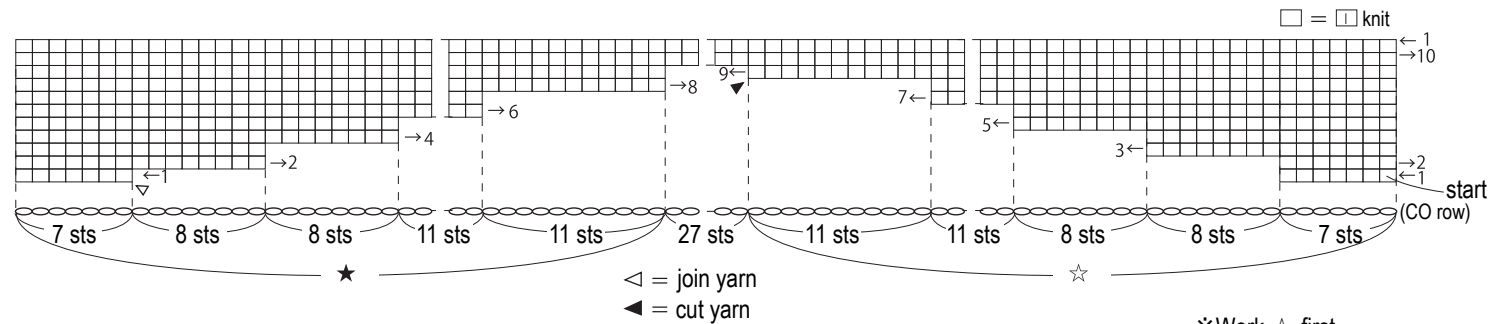
4.5mm needles




※Start picking up stitches from the 27 sts at the center.

Ladies' size: How to pick up stitches for front hem

4.5mm needles




※Work ☆ first.

Use this QR code on your smartphone to view a video about how to work the back hem. → 

検索

※To view on computer, search on the Pierrot Yarns website instead.

Use this QR code on your smartphone to view a video about how to work the front hem. → 

検索

※To view on computer, search on the Pierrot Yarns website instead.