

213fw-28 Erfurt Hooded Scarf



Suggested yarn:

- Pierrot Yarns Erfurt [80% wool, 20% baby alpaca; 96 yds/88m per 1.41 oz./40g skein]; color #04 chocolate milk, 5 skeins [185g]

Tools/Notions:

- 4.2mm (approx. US 6) and 4.5mm (US 7) knitting needles or sizes necessary to achieve gauge
- cable needle

Finished measurements:

- width 20cm/7.87"
- length 165cm/64.96"

Gauge (10cm/4" square):

- pattern stitch: 22 sts and 31 rows

Gauge may vary according to individual knitting style. Change needle size if necessary to achieve gauge. Alternatively, rework pattern with your own gauge measurements.

Knitting Tips

Hooded scarf: Cast on with long-tail cast-on method. Work in k1p1 ribbing, then pattern stitch, then k1p1 ribbing. Bind off in pattern.

Finishing: Fold at center as shown in schematics with right sides facing you. Seam 56 rows together with mattress stitch to form hood.

Abbreviations:

BO = bind off

C4F = slip 2 sts to cable needle and hold in front; k2 from left needle; k2 from cable needle

C4Fp = slip 3 sts to cable needle and hold in front; p1 from left needle; k3 from cable needle

C4Bp = slip 1 st to cable needle and hold in back; k3 from left needle; p1 from cable needle

C6F = slip 3 sts to cable needle and hold in front; k3 from left needle; k3 from cable needle

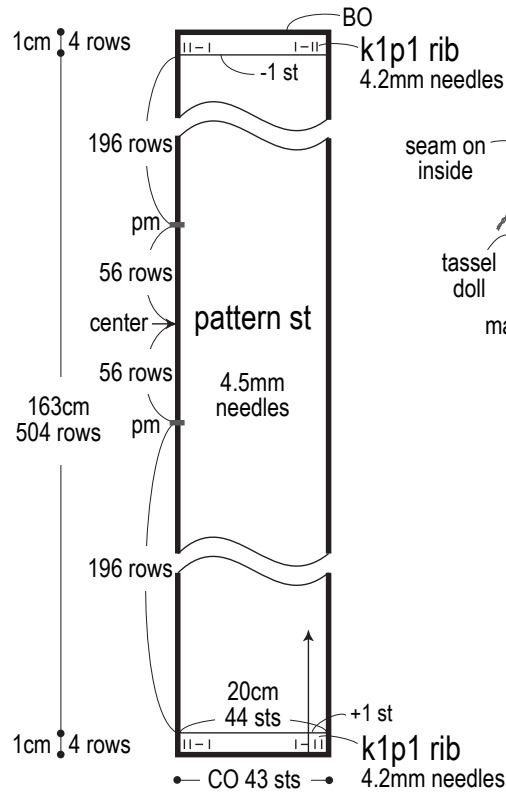
CO = cast on

k = knit stitch

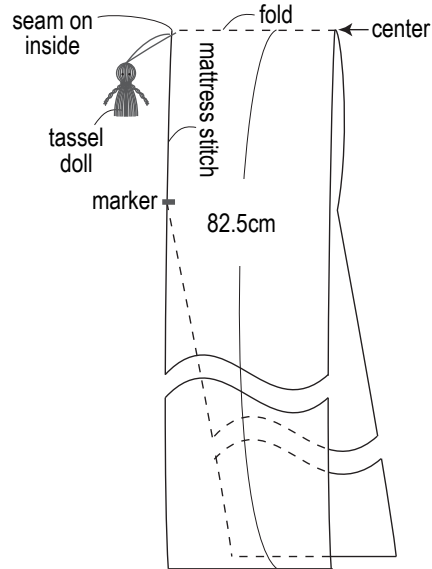
p = purl stitch

pm = place marker

Scarf schematic

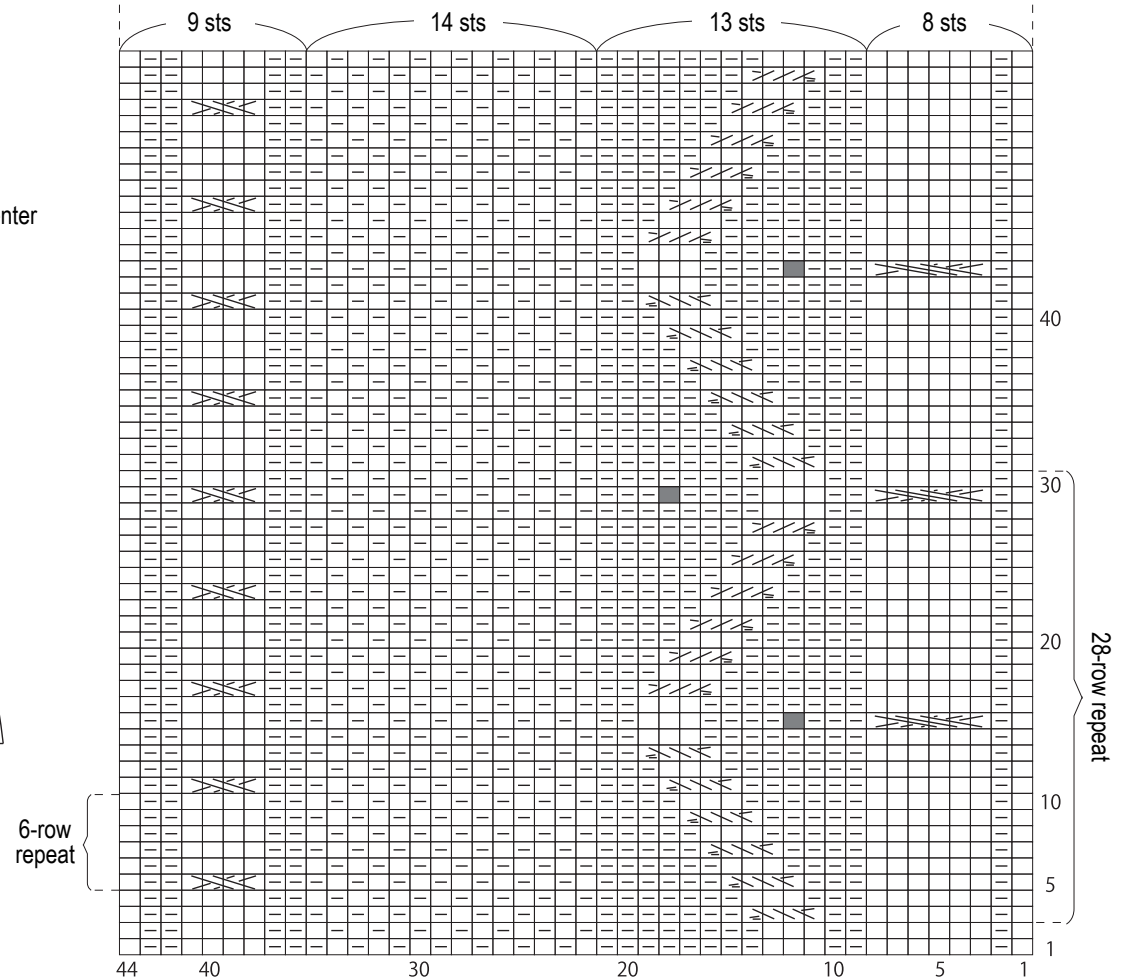


Finishing



Pattern stitch (4.5mm needles)

□ = □ knit



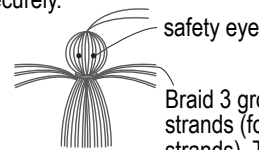
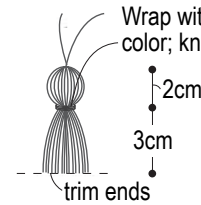
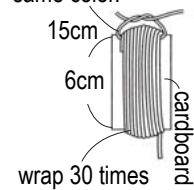
Tassel doll

*Yarn remnants are ideal for this project.

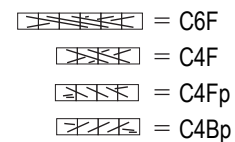
materials:

- yarn
- 4 safety eyes (Hamanaka H-221-304)

Tie with yarn of same color.



Braid 3 groups of 2 strands (for a total of 6 strands). Tie knot at tip using same color yarn.



5-st, 5-row bobble stitch

