

# 213fw-363sh Meringue Mohair Shawl



## Suggested yarn:

- Pierrot Yarns Meringue Mohair [100% acrylic; 124 yds/113m per 0.88 oz./25g skein]; color #08 cocoa brown, 4 skeins [100g]

## Tools/Notions:

- 4.0mm (US G) crochet hook or size necessary to achieve gauge

## Finished measurements:

- width 32cm/12.60"
- length 137cm/53.94"

## Gauge (10cm/4" square):

- pattern stitch: 26 sts and 11 rows

*Gauge may vary according to individual crochet style. Change hook size if necessary to achieve gauge. Alternatively, rework pattern with your own gauge measurements.*

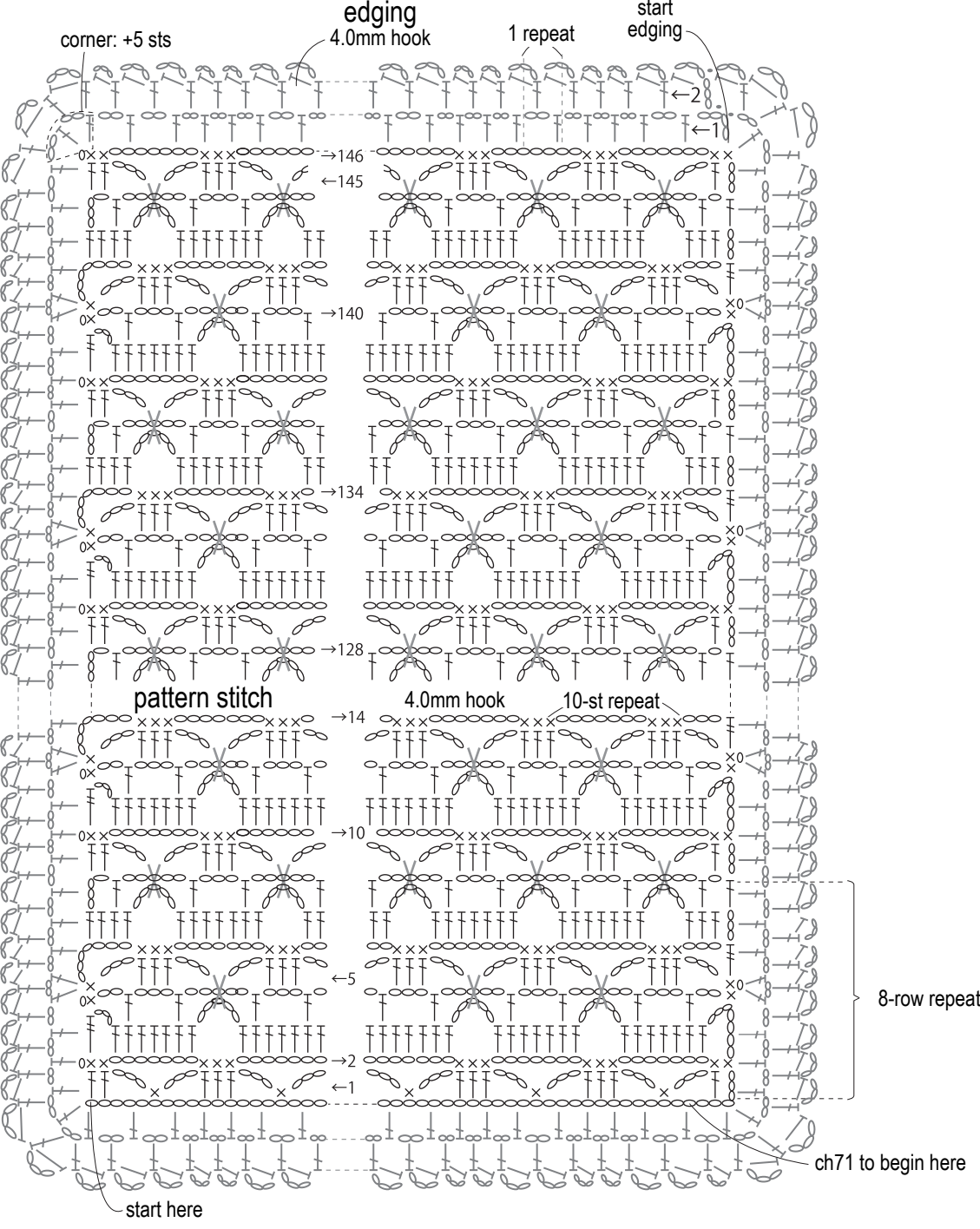
## Crochet Tips

Work foundation chain to begin, then work shawl in pattern stitch. Without cutting yarn, work edging in the round.

## Abbreviations:

- ch = chain
- rep = pattern repeat(s)
- sc = single crochet (US)

# Instructions



X = sc, working stitch  
around previous 2 rows

# Schematic

