

213s-14 Sawayaka Tanktop



Suggested yarn:

- Pierrot Yarns Sawayaka Cotton [100% cotton; 416 yds/380m per 3.53 oz./100g cone]; color #21 papaya orange, 2 cones [160g]

Tools/Notions:

- 2.5mm (approx. US B or C) and 3.0mm (approx. US C or D) crochet hooks or sizes necessary to achieve gauge

Finished measurements:

- chest 72cm/28.35"
- cross back width 27cm/10.63"
- length 42cm/16.54"

Gauge (10cm/4" square):

- pattern stitch (with 3.0mm hook): 29 sts and 9.5 rounds
- pattern stitch (with 2.5mm hook): 31 sts and 10.5 rounds

Gauge may vary according to individual crochet style. Change hook size if necessary to achieve gauge. Alternatively, rework pattern with your own gauge measurements.

Crochet Tips

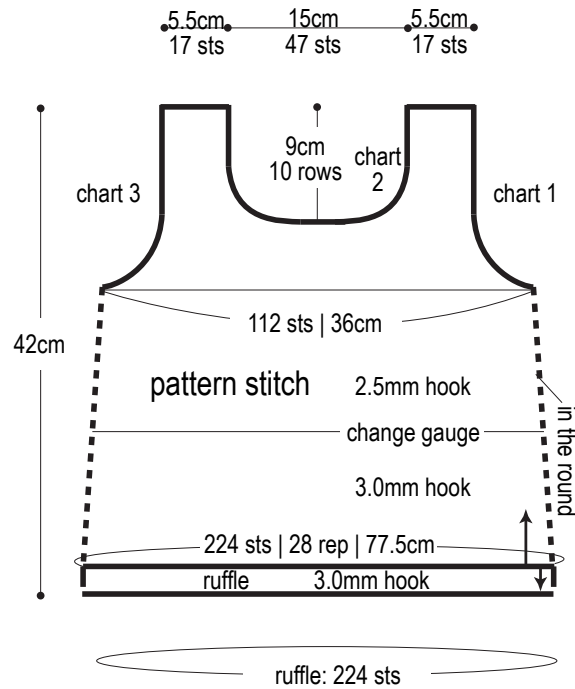
Body: Starting with a foundation chain, crochet 5 separate ruffles in the round and reserve for use later. Work foundation chain to begin body of garment (note that number of chain sts given does not include number needed for turning post). Work pattern stitch back and forth in joined rounds. Where indicated, attach ruffles to body by working body stitches through both ruffle and body (see "How to attach ruffle"). Starting from armscye, separate front and back body and work each separately. Starting from neckline, work left and right sides separately.

Finishing: Seam shoulders with chain seam (alternating chain stitches and slip stitches as needed to maintain pattern). Work ruffle in the round around hem. Work sc in the round around neckline and armholes.

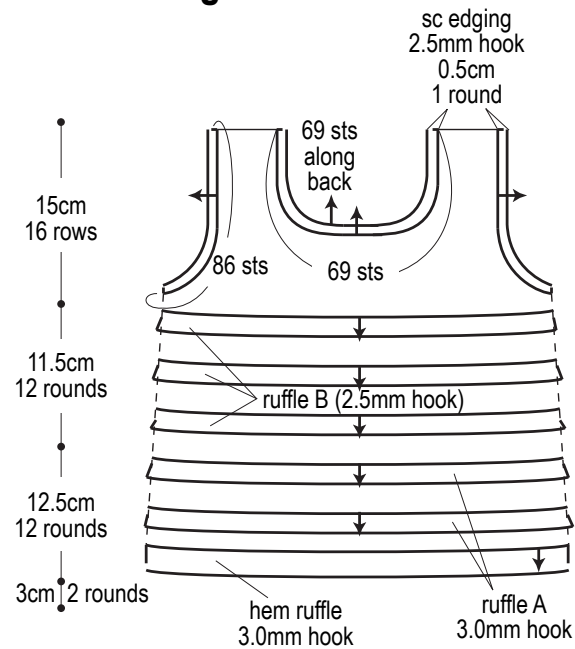
Abbreviations:

ch = chain
dc = double crochet (US)
rep = pattern repeat(s)
sc = single crochet (US)

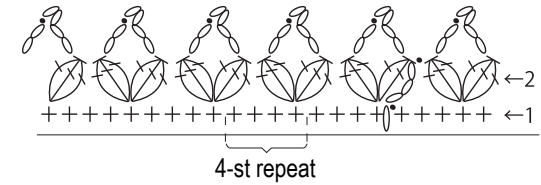
Body



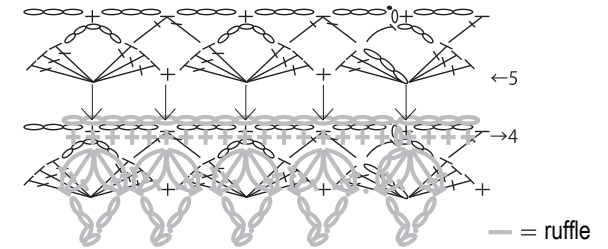
Finishing



Hem ruffle (3.0mm hook)

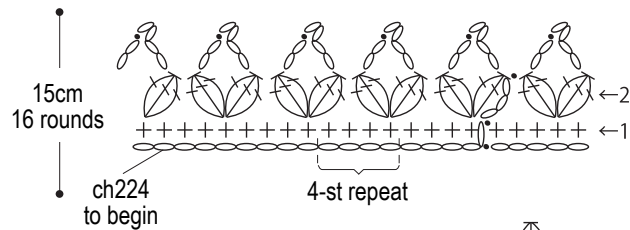



How to attach ruffle



※Place foundation chain of ruffle on top of fourth round of body. Attach ruffle to body as you work fifth round of body by working new stitches through ruffle stitches.

Ruffle



 = 3-dc cluster stitch

Ruffle A (3.0mm hook): place on round 4/8 of body; join to body on round 5/9 (2 total).

Ruffle B (2.5mm hook): place on round 12/16/20 of body; join to body on round 13/17/21 (3 total).

Use this QR code on your smartphone to view a video about attaching the ruffle.



※To view on computer, search on the Pierrot Yarns website instead.

検索

Body

