

28-29-31 Air Soft Muffler



Suggested yarn:

- Pierrot Yarns Air Soft [45% acrylic, 40% wool, 15% nylon; 44 yds/40m per 1.41 oz./40g skein]; color #22 crimson, 6 skeins [240g]

Tools/Notions:

- 6.6mm (US 10½) knitting needles or size necessary to achieve gauge

Finished measurements:

- width 30cm/11.81"
- length 190cm/74.80"

Gauge (10cm/4" square):

- garter stitch: 13 sts and 20 rows

Gauge may vary according to individual knitting style. Change needle size if necessary to achieve gauge. Alternatively, rework pattern with your own gauge measurements.

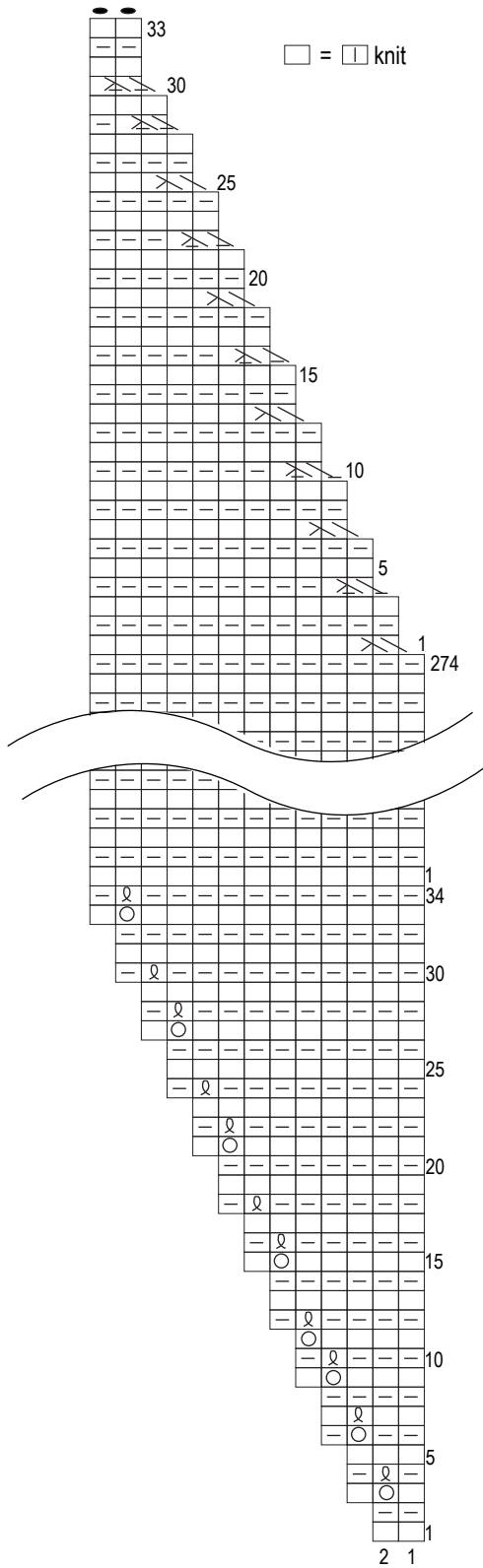
Knitting Tips

Cast on 2 stitches with long-tail cast-on method. Work 34 rows in garter stitch, increasing to 13 stitches as indicated in chart. Work even for 274 rows. Over next 33 rows, decrease to 2 stitches as indicated in chart. Bind off in pattern. Fasten fringe to shawl as shown in schematic.

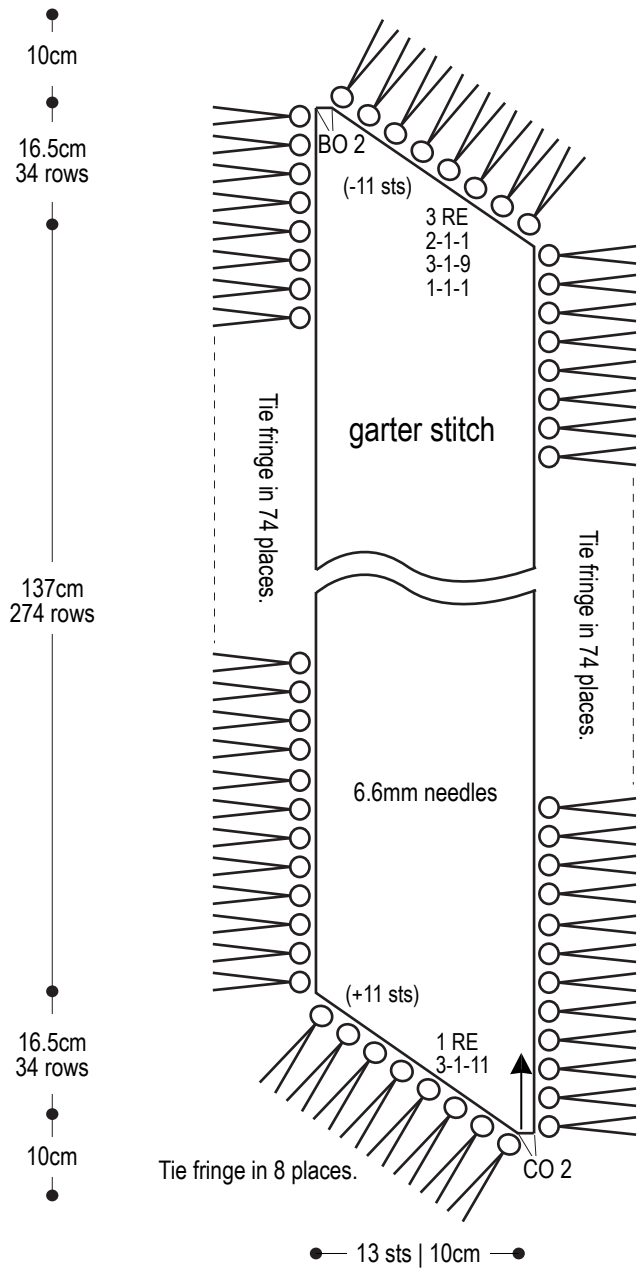
Abbreviations:

- BO = bind off
- CO = cast on
- k = knit stitch
- RE = row(s) even
- #-#-# = rows-stitches-times

Instructions (chart)



Shawl schematic



※Make fringe as follows: take 3 strands of yarn, each 23cm in length. Fold these 3 strands in half. Tie 8 of these to each end where indicated, and 74 to sides where indicated.