

amicomo11-4 Mother-Daughter Legwarmers



Suggested yarn:

- Pierrot Yarns Fine Merino [100% merino wool; 103 yds/94m per 1.06 oz./30g skein];
 - girls' size: color #201 off-white, 1 skein [15g]
 - ladies' size: color #201 off-white, 1 skein [25g]
- Pierrot Yarns Yuyake no Sora [100% superwash wool; 427 yds/390m per 3.17-3.53 oz./90-100g hank];
 - girls' size: color #106 red gradation, 1 hank [65g]
 - ladies' size: color #108 green blue gradation, 2 hanks [130g]

Tools/Notions:

- 3.6mm (approx. US 5) and 4.2mm (approx. US 6) double-pointed knitting needles or sizes necessary to achieve gauge

Finished measurements:

- girls' size:
 - length 28cm/16.14"
 - calf circumference 21cm/19.29"
- ladies' size:
 - length 36cm/16.14"
 - calf circumference 31cm/19.29"

Gauge (10cm/4" square):

- ribbing (3.6mm needles): 26 sts and 30 rows
- pattern stitches A & B (4.2mm needles): 23 sts and 25 rows

Gauge may vary according to individual knitting style. Change needle size if necessary to achieve gauge. Alternatively, rework pattern with your own gauge measurements.


Knitting Tips

❖**Note:** When working with Fine Merino, use 1 strand of yarn. When working with Yuyake no Sora, use 2 strands of yarn held together.

Cast on with long-tail cast-on method. With 3.6mm needles, work k3p2 ribbing in the round. Change to 4.2mm needles and continue in pattern stitch, decreasing where indicated. Change to 3.6mm needles and work increases while changing back to k3p2 ribbing. Bind off in pattern. Make second legwarmer in the same manner.

Abbreviations:

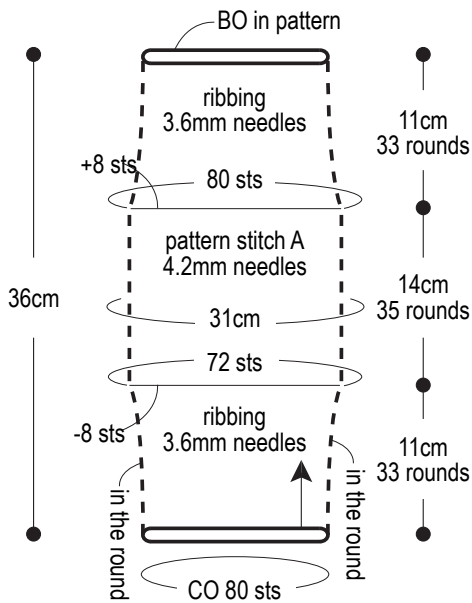
BO = bind off
CO = cast on
k = knit stitch
p = purl stitch

Use this QR code on your smartphone to view a video about how to work stranded knitting (with yarn carried across the back.) → 

検索

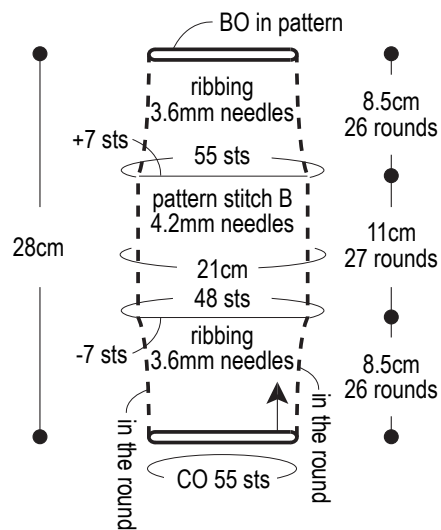
※To view on computer, search on the Pierrot Yarns website instead.

Ladies' legwarmers



※On first round of pattern stitch, decrease 8 sts evenly spaced around stitches. On round 35, increase 8 sts evenly around stitches.

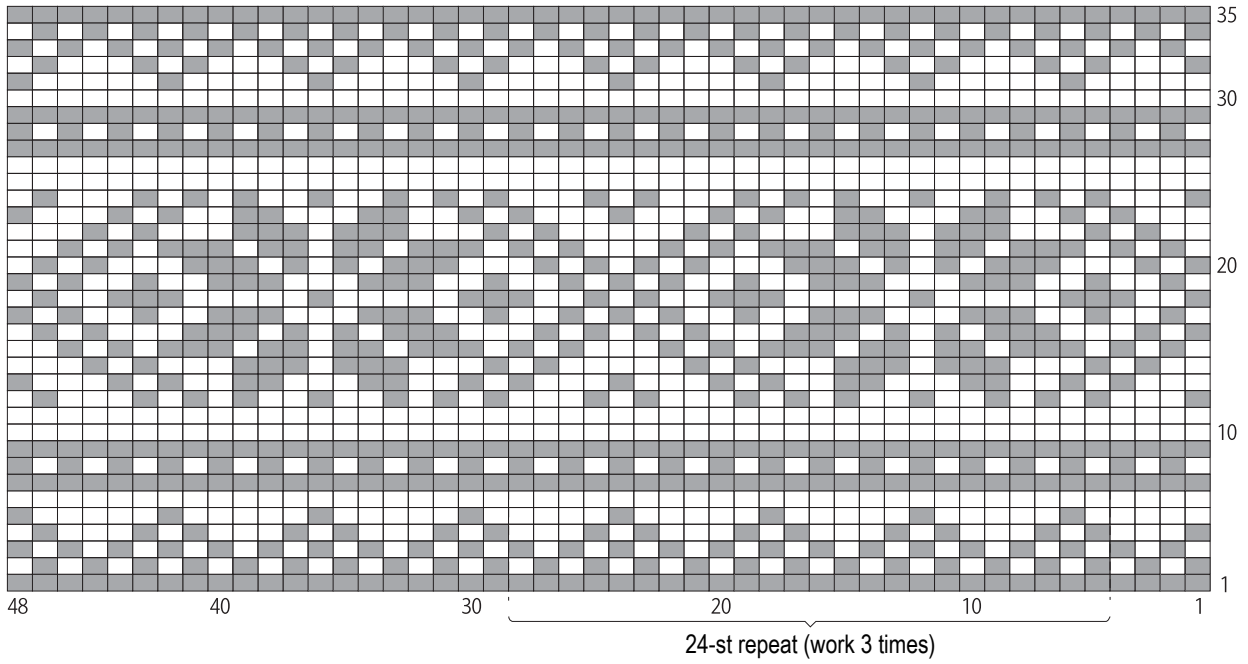
Girls' legwarmers



※On first round of pattern stitch, decrease 7 sts evenly spaced around stitches. On round 27, increase 7 sts evenly around stitches.

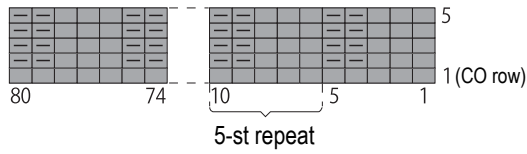
Pattern stitch A (4.2mm needles)

□ = □ knit



Ribbing (3.6mm needles)

□ = □ knit

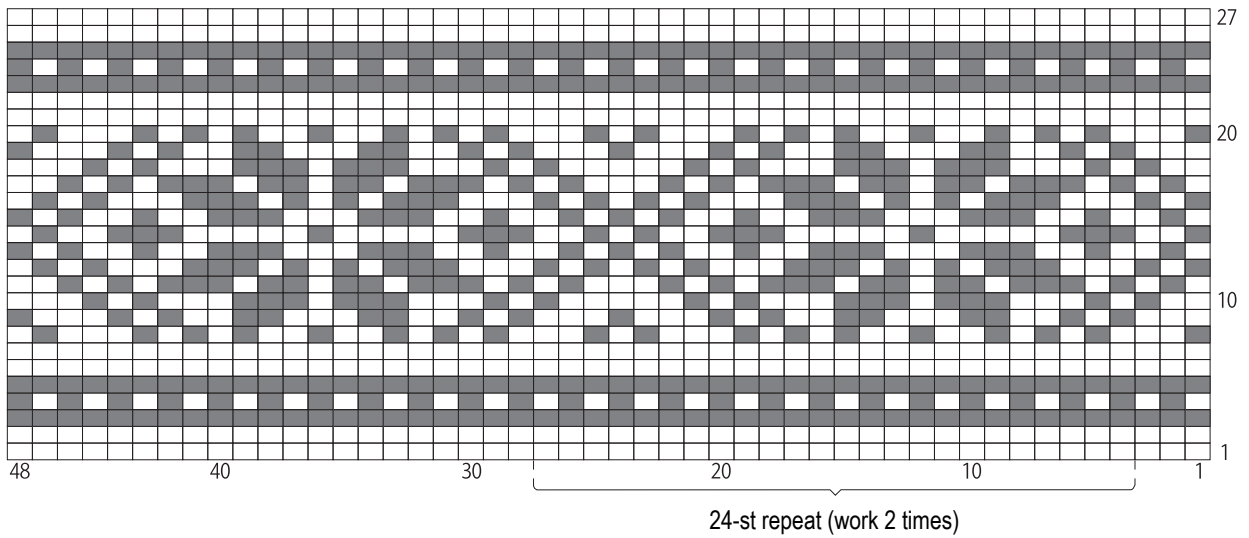


Ladies' colors

- = Fine Merino
- = Yuyake no Sora, color #108

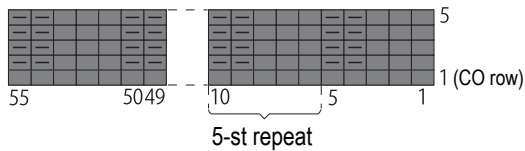
Pattern stitch B (4.2mm needles)

□ = □ knit



Ribbing (3.6mm needles)

□ = □ knit



Kids' colors

- = Fine Merino
- = Yuyake no Sora, color #106