

amicomo11-11 Banana



Suggested yarn:

- Pierrot Yarns Hokkori Acryl [100% acrylic; 60 yds/66m per 1.56 oz./50g skein];
 - color #01 vanilla, 1 skein [15g]
 - color #12 lemon, 1 skein [15g]

Tools/Notions:

- 4.0mm (US G) crochet hook or size necessary to achieve gauge
- small amount polyfiber stuffing
- velcro

Finished measurements:

- Please see schematics.

Gauge (10cm/4" square):

- No gauge information is provided in the original pattern.

Gauge may vary according to individual crochet style. Change hook size if necessary to achieve gauge. Alternatively, rework pattern with your own gauge measurements.

Crochet Tips

Parts A, B, and C: Create magic ring, then work in sc, increasing according to chart.

Lower section of banana: Insert stuffing into part A, then seam to part B with whipstitch.

Upper section of banana: Insert stuffing into part C, then seam to part B with whipstitch. Sew velcro to various parts of B.

Peel: Work chain to begin, then work in sc. Seam peel to low section of banana where indicated on schematic. Sew velcro to upper section of banana and peel so that the velcro touches.

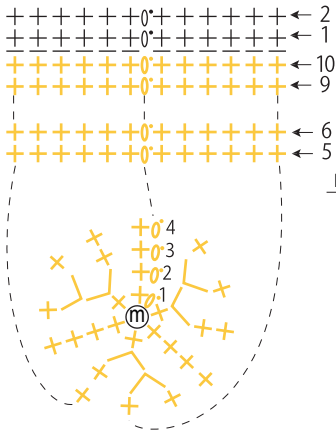
Abbreviations:

ch = chain

m = magic ring

sc = single crochet (US)

Part A (4.0mm hook)



round no.	stitch count
2	12
1	12 (sc tbl)
10	12
~	~
4	12
3	12 (+3 sts)
2	9 (+3 sts)
1	6

Work into magic ring.

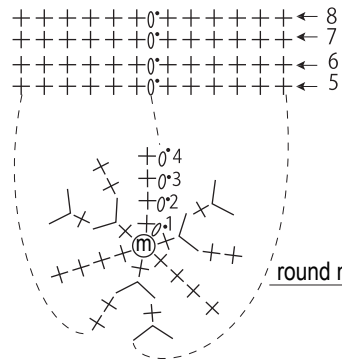
- = #01 vanilla
- = #12 lemon
- ± = sc tbl (sc through back loop)

Part B (4.0mm hook)

make 2



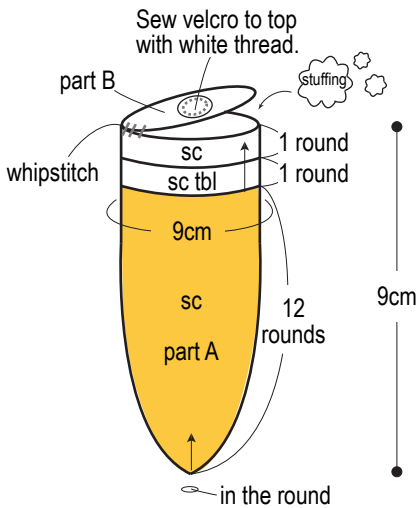
Part C (4.0mm hook)



round no.	stitch count
8	12
~	~
5	12
4	12 (+3 sts)
3	9 (work even)
2	9 (+3 sts)
1	6

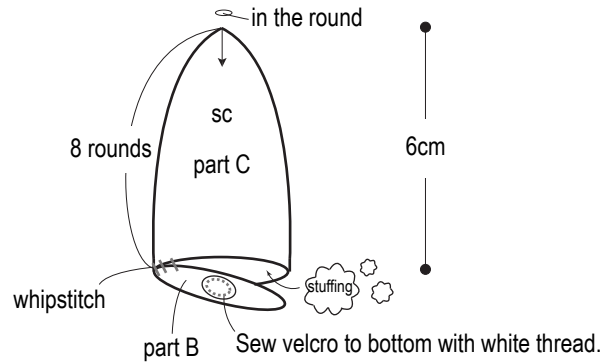
Work into magic ring.

Lower banana

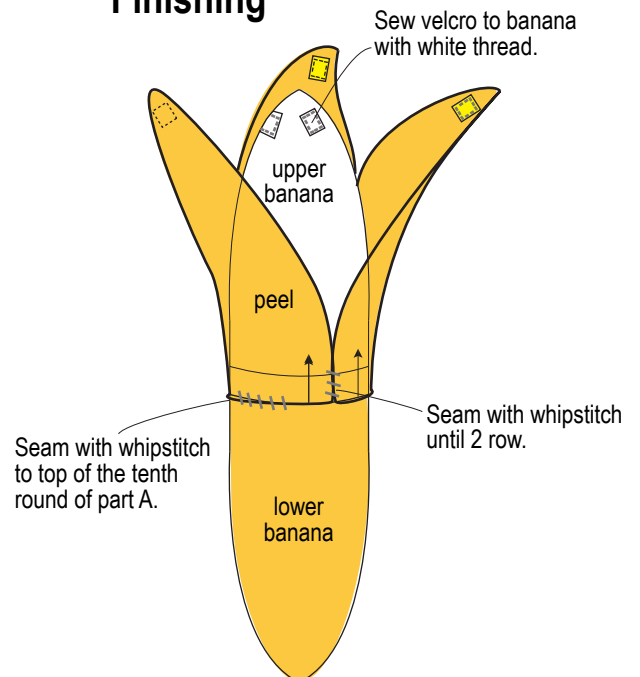


*Seam on last round of part B, working into half of each sc stitch.

Upper banana



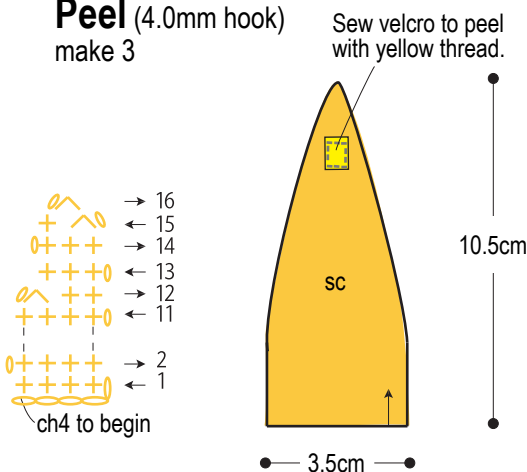
Finishing



*Yellow velcro is suggested for the peel, so that it will be less noticeable. However, white velcro will also work.

Peel (4.0mm hook)

make 3



Sew velcro to peel with yellow thread.