

Honnori Sleeveless Sweater



Suggested yarn:

- Keito-Zakka Stores Honnori Tetsumugi Kibun [51% rayon, 49% cotton; 71 yds/65m per 1.41 oz./40g skein]; color #02 soda, 6 skeins [220g]

Tools/Notions:

- 5.1mm (approx. US 8) straight knitting needles or size necessary to achieve gauge
- 5.1mm (approx. US 8) double-pointed knitting needles or size necessary to achieve gauge

Finished measurements:

- bust 91cm/35.83"
- cross back width 35cm/13.78"
- length 50cm/19.69"

Gauge (10cm/4" square):

- stockinette stitch and pattern stitches A & B: 16 sts and 22 rows

Gauge may vary according to individual knitting style. Change needle size if necessary to achieve gauge. Alternatively, rework pattern with your own gauge measurements.

Knitting Tips

Front & back body; collar: Cast on with long-tail cast-on method. Work in pattern stitch and stockinette stitch. Work armscye shaping as following: bind off stitches and work decreases where indicated. Starting from next row, k2 at edge and purl third stitch. To form seam allowance for collar, increase 1 stitch at each edge using backwards loop cast-on method, then work collar as continuation of body. When finished, bind off loosely in pattern.

Finishing: Seam shoulders with three-needle bind-off. Seam sides and sides of collar with mattress stitch.

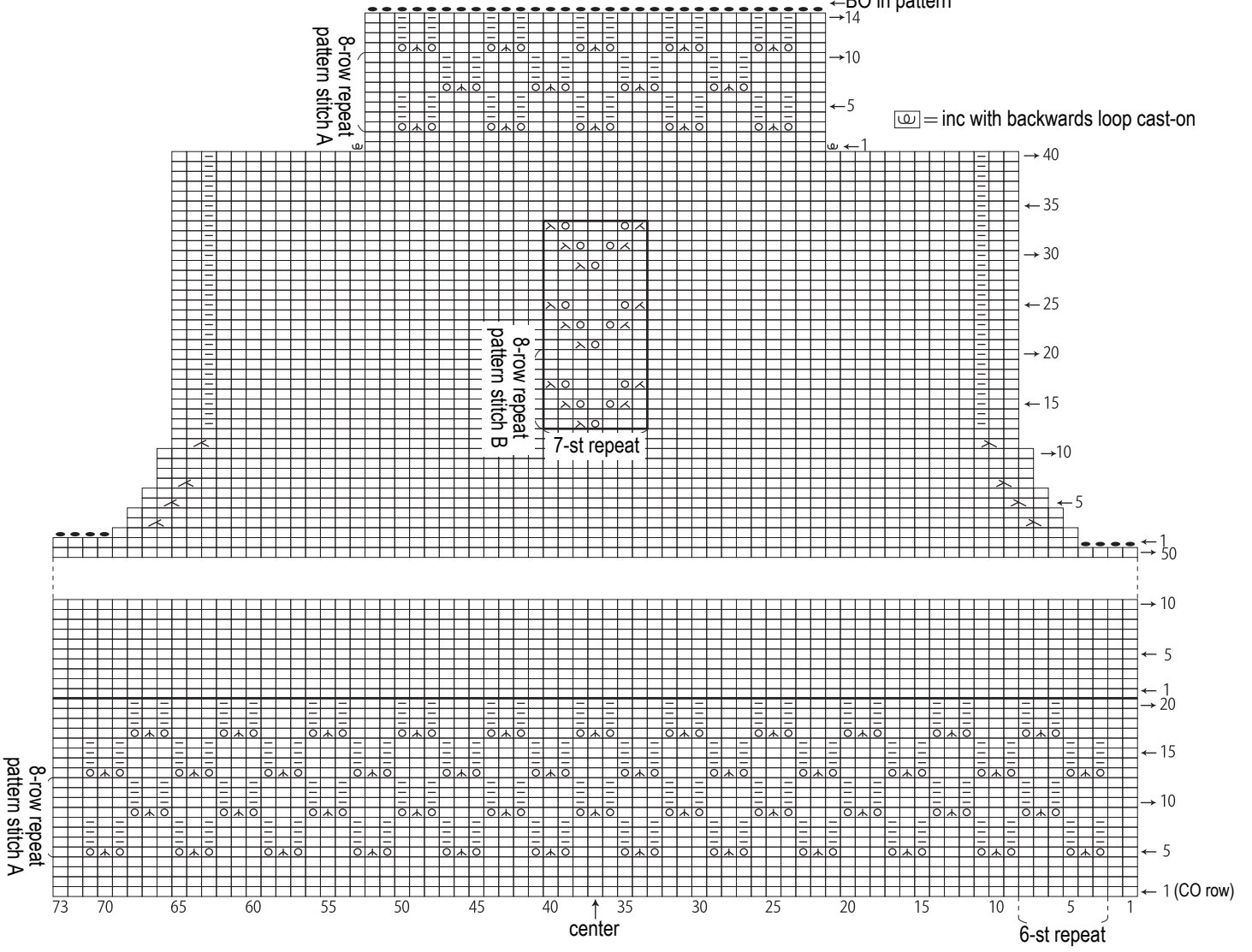
Abbreviations:

BO = bind off
CO = cast on
k = knit stitch
inc = increase
p = purl stitch
RE = row(s) even
= rows-stitches-times

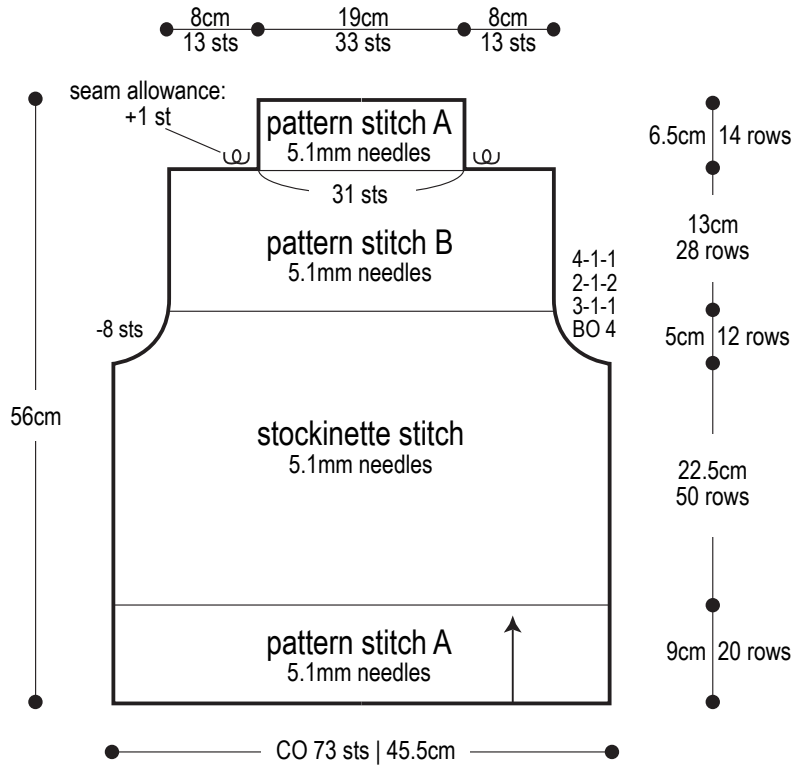
□ = | knit

← BO in pattern

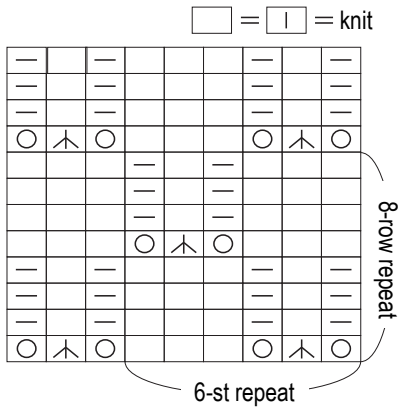
⊖ = inc with backwards loop cast-on



Front & back body; collar



Pattern stitch A



Pattern stitch B

