

# 212fw-32 Kids' Sourire Cap



## Suggested yarn:

- Pierrot Yarns Sourire [87% wool, 13% nylon; 77 yds/70m per 1.41 oz./40g skein]; color #42 café au lait, 2 skeins [70g]

## Tools/Notions:

- 4.5mm (US 7) and 5.1mm (approx. US 8) double-pointed knitting needles or sizes necessary to achieve gauge
- cable needle

## Finished measurements:

- head circumference 50.5cm/19.88"
- length 21cm/8.27"

## Gauge (10cm/4" square):

- pattern stitch: 18 sts and 20 rounds

*Gauge may vary according to individual knitting style. Change needle size if necessary to achieve gauge. Alternatively, rework pattern with your own gauge measurements.*

## Knitting Tips

Cast on with long-tail cast-on method. Work in k1p1 ribbing in the round. Then continue in pattern stitch in the round. Starting from round 23, work evenly spaced decreases. Thread yarn through remaining stitches and cinch shut. Make pompom and attach to top of hat.

## Abbreviations:

CO = cast on

dec = decrease(s)

DPNs = double-pointed knitting needles

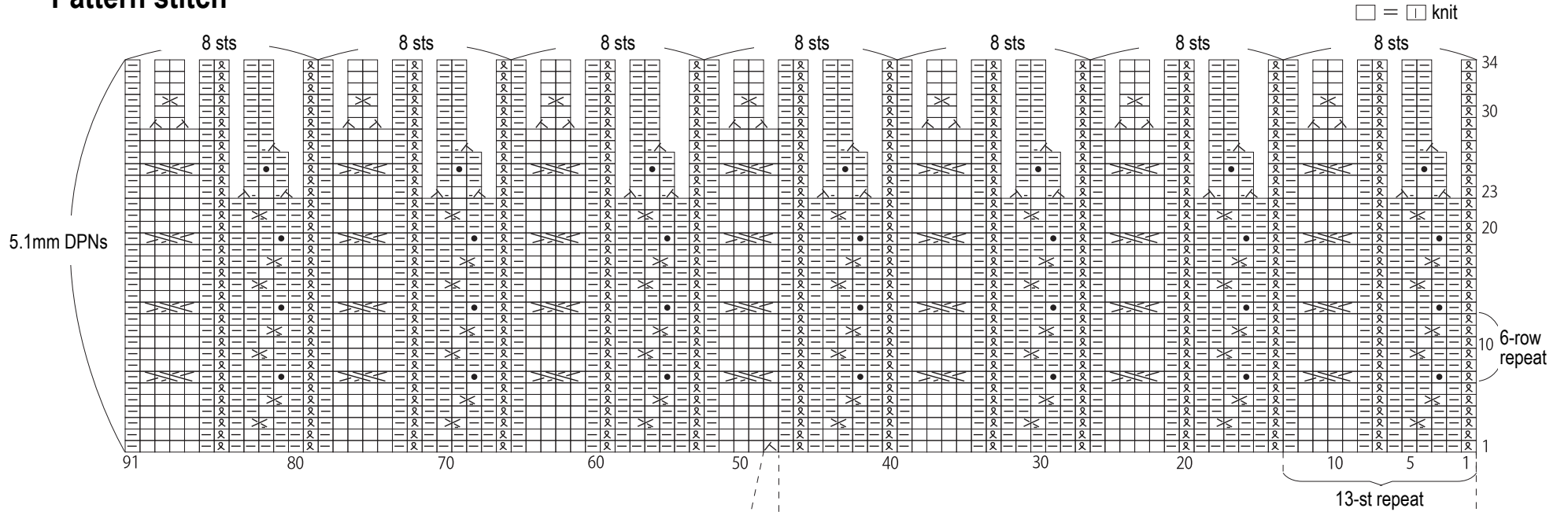
k = knit stitch

p = purl stitch

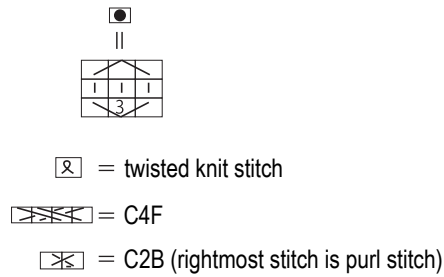
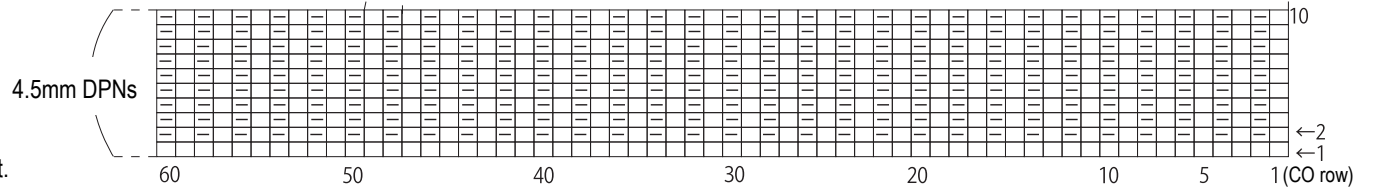
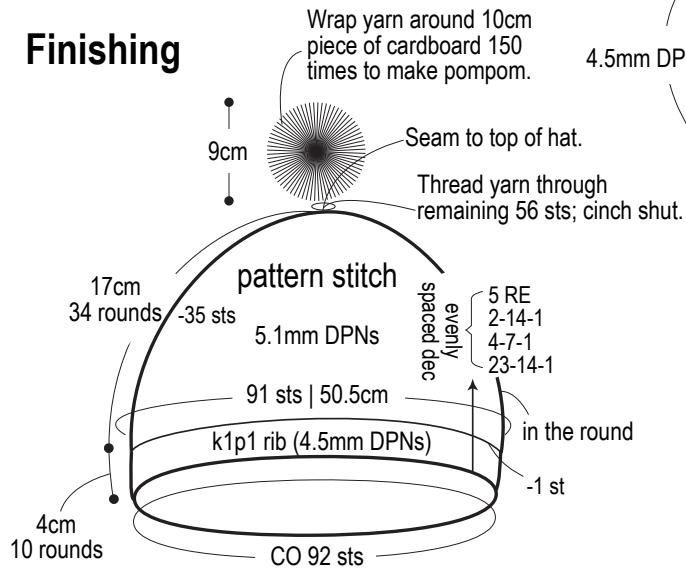
RE = round(s) even

#-#-# = rows-stitches-times

# Pattern stitch



# Finishing



# How to close top (example for reference)

Cut yarn, leaving a tail. Thread tapestry needle with tail, then thread through remaining stitches as shown in diagram. Thread yarn through twice.

