

212w-20 Sitting Panda



Suggested yarn:

- Pierrot Yarns Hokkori Acryl [100% acrylic; 66 yds/60m per 1.76 oz./50g skein];
 - color #01 vanilla, 2 skeins [65g]
 - color #08 cider, 2 skeins [60g]

Tools/Notions:

- 4.0mm (US G) crochet hook or size necessary to achieve gauge
- polyfiber stuffing
- tapestry needle

Finished measurements:

- Please see schematic.

Gauge (10cm/4" square):

- single crochet (US): 13.5 sts and 15 rounds

Gauge may vary according to individual crochet style. Change hook size if necessary to achieve gauge. Alternatively, rework pattern with your own gauge measurements.

Crochet Tips

Body parts: Create magic ring. Work in sc according to chart, increasing and decreasing as indicated. After fastening off each piece, leave a long yarn tail (for seaming later).

Finishing: Insert stuffing into each part. Seam together where indicated with whipstitch. (Seam ears and both parts of eye without inserting stuffing.) Embroider nose and eyes with color #08 cider.

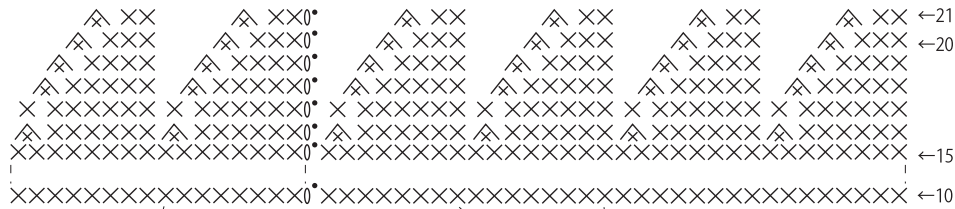
Abbreviations:

ch = chain

m = magic ring



sc = single crochet (US)

Head (4.0mm hook)

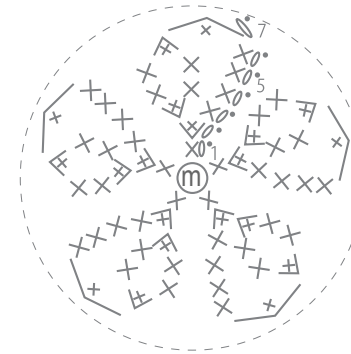


round	stitch count
21	18 sts
20	24 sts
19	30 sts
18	36 sts
17	42 sts (work even)
16	42 sts (-6 sts)
15	48 sts
~	~ (work even)
10	48 sts
9	48 sts (+6 sts)
8	42 sts (work even)
7	42 sts
6	36 sts
5	30 sts
4	24 sts
3	18 sts
2	12 sts
1	6 sts

(Work into magic ring.)

 = #01 vanilla
 = #08 cider

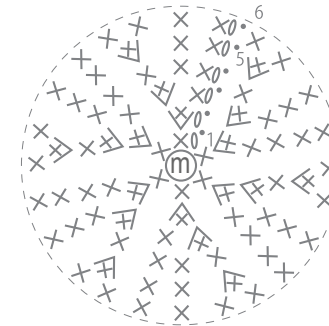
Tail (4.0mm hook)



round	stitch count
7	5 sts
6	10 sts
5	15 sts
4	15 sts
3	15 sts
2	10 sts
1	5 sts

(Work into magic ring.)

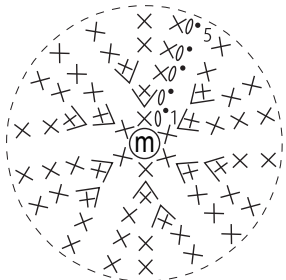
Ear: make 2 (4.0mm hook)



round	stitch count
6	24 sts (work even)
5	24 sts (+6 sts)
4	18 sts (work even)
3	18 sts
2	12 sts
1	6 sts

(Work into magic ring.)

Nose (4.0mm hook)



round	stitch count
5	18 sts
4	18 sts
3	18 sts
2	12 sts
1	6 sts

(Work into magic ring.)

Eye outline: make 2 (4.0mm hook)



round	stitch count
2	16 sts (+6 sts)
1	10 sts

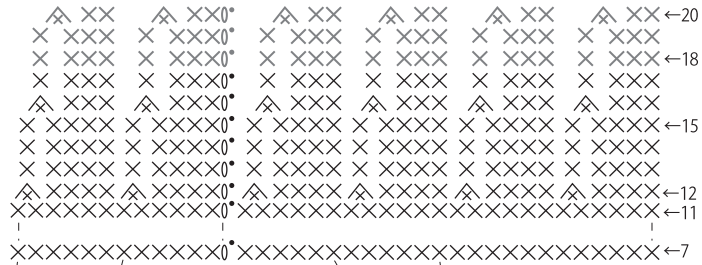
ch4 to begin

Eye: make 2 (4.0mm hook)



round	stitch count
1	6 sts (Work into magic ring.)

Torso (4.0mm hook)

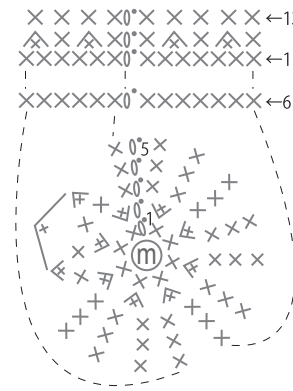


round	stitch count
20	18 sts (-6 sts)
19	24 sts
18	24 sts work even
17	24 sts
16	24 sts (-6 sts)
15	30 sts
~	~ work even
13	30 sts
12	30 sts (-6 sts)
11	36 sts
~	~ work even
7	36 sts
6	36 sts
5	30 sts
4	24 sts (+6 sts per round)
3	18 sts
2	12 sts
1	6 sts (Work into magic ring.)

#08 cider

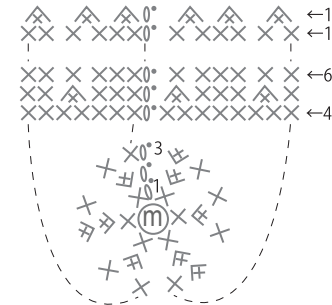
#01 vanilla

Foot: make 2 (4.0mm hook)



round	stitch count
13	9 sts (work even)
12	9 sts (-4 sts)
11	13 sts
~	~ work even
6	13 sts
5	13 sts (-1 st)
4	14 sts (-2 sts)
3	16 sts (work even)
2	16 sts (+8 sts)
1	8 sts (Work into magic ring.)

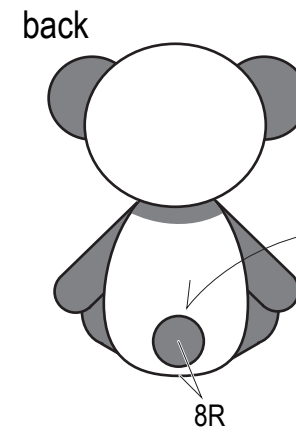
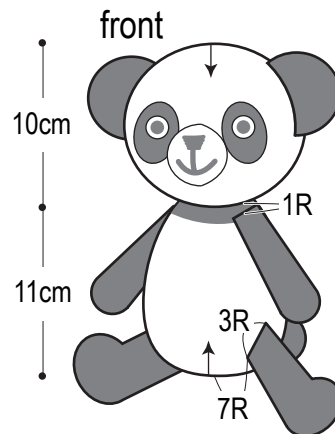
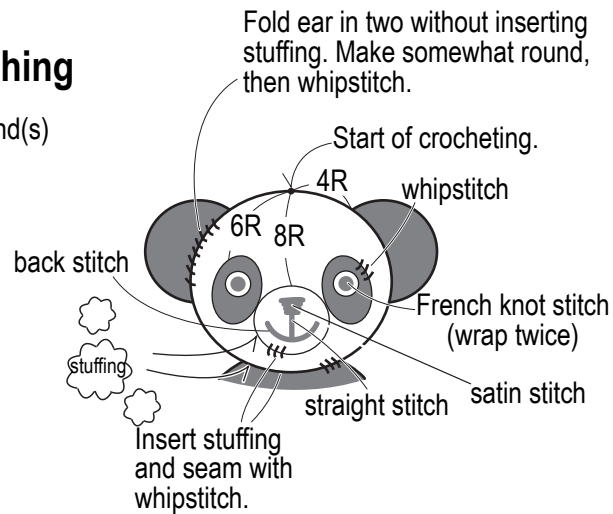
Arm: make 2 (4.0mm hook)



round	stitch count
12	6 sts (-6 sts)
11	12 sts
~	~ work even
6	12 sts
5	12 sts (-3 sts)
4	15 sts (work even)
3	15 sts (+3 sts)
2	12 sts (+6 sts)
1	6 sts (Work into magic ring.)

Finishing

R= round(s)



※Insert stuffing. Thread yarn through stitches of last round, then cinch shut.

※Seam all parts together with whipstitch.