

212w-10 Asymmetric Aspen Pullover



Suggested yarn:

- Filatura Botto Poala Aspen 3 [100% cashmere; 126 yds/115m per 0.88 oz./25g skein]; color #08 light gray, 12 skeins [280g]

Tools/Notions:

- 3.9mm (approx. US 6) straight knitting needles or size necessary to achieve gauge
- 3.3mm (approx. US 3) double-pointed knitting needles or size necessary to achieve gauge
- cable needle

Finished measurements:

- length 57cm/22.44"

Gauge (10cm/4" square):

- pattern stitch: 24 sts and 27 rows

Gauge may vary according to individual knitting style. Change needle size if necessary to achieve gauge. Alternatively, rework pattern with your own gauge measurements.

Knitting Tips

Back body: Loosely ch90 with waste yarn (in contrasting color) and save for later. Cast on 208 sts with long-tail cast-on method; work 132 rows in pattern stitch. Loosely bind off 90 stitches on the right edge of the knitting. On the next row, work 118 sts, and also pick up and knit 90 new sts from the crochet chain (made for this purpose earlier). Work in pattern stitch until last row, then bind off loosely in pattern.

※The line of 90 bound-off stitches will form the neckline.

Finishing: Seam right side and left shoulder with mattress stitch. Seam left side loosely with crochet slip stitch. Pick up stitches around neckline, cuffs, and hem, respectively, and work edging in k1p1 ribbing in the round for each of them.

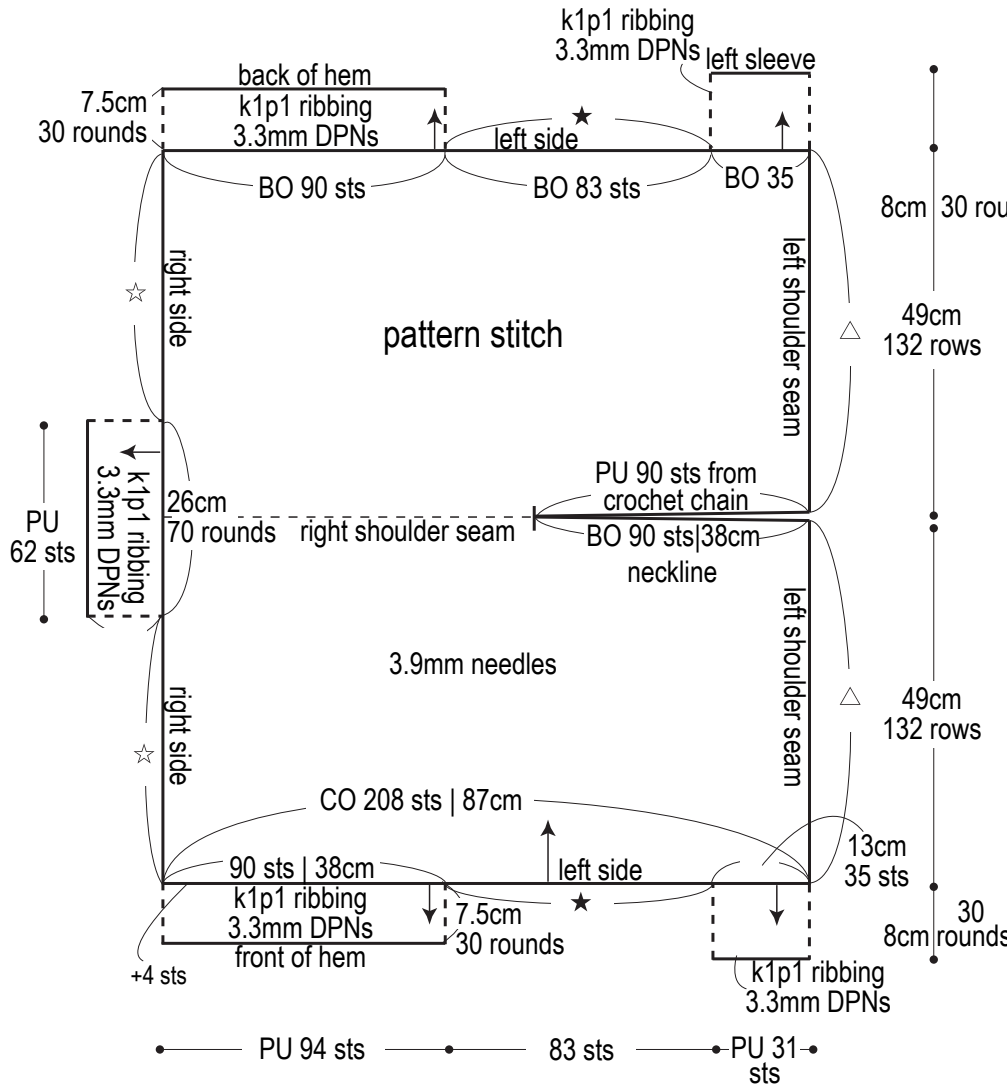
Abbreviations:

BO = bind off

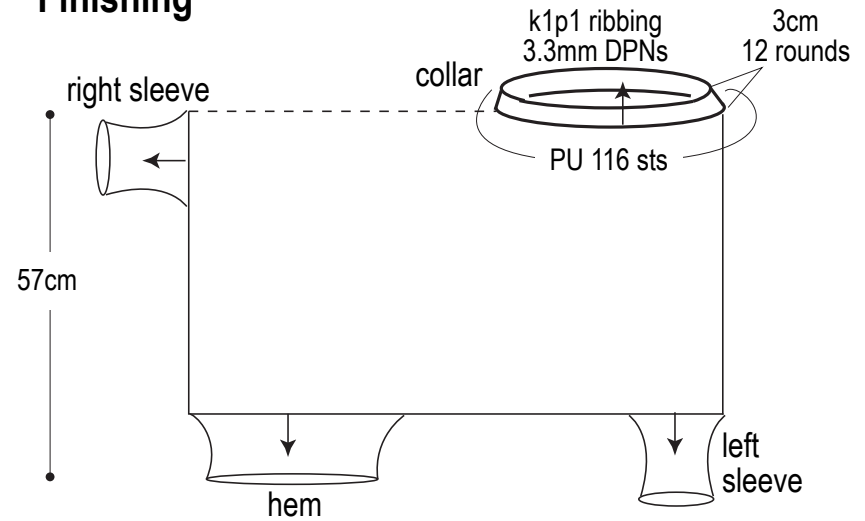
CO = cast on

PU = pick up

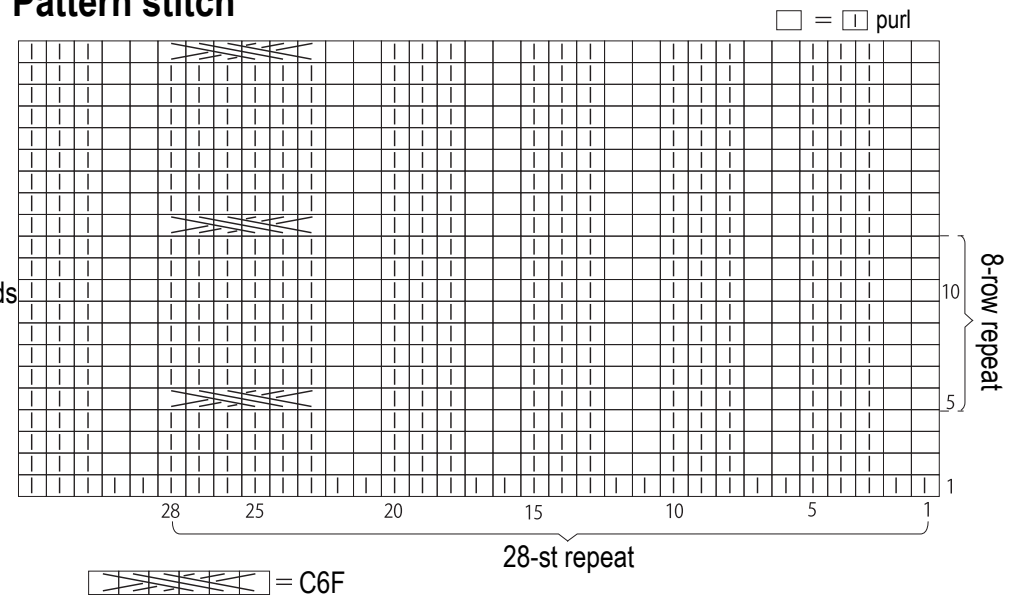
Back & front



Finishing



Pattern stitch



※Align right side and left shoulder seam, respectively, by matching up the symbols. Seam with mattress stitch. Align symbols for left side; seam with crochet slip stitch. Pick up stitches at hem, cuff, and neckline; work edging in k1p1 ribbing in the round.