

212w-05 Yuttari Sweater



Suggested yarn:

- Pierrot Yarns Yuyake no Sora [100% wool; 427 yds/390m per 3.17-3.53 oz./90-100g hank]; color #108 green-blue gradation, 2 hanks [200g]
- Pierrot Yarns Chelsea [38% nylon, 32% acrylic, 30% mohair; 126 yds/115m per 1.76 oz./50g skein]; color #08 gray, 5 skeins [250g]

Tools/Notions:

- 5.1mm (approx. US 8) and 5.7mm (approx. US 9) straight knitting needles or size necessary to achieve gauge
- 5.1mm (approx. US 8) double-pointed knitting needles or size necessary to achieve gauge

Finished measurements:

- center back neck-to-cuff 64.5cm/25.39"
- length 59.5cm/23.43"

Gauge (10cm/4" square):

- pattern stitch: 14.5 sts and 18 rows
- reverse stockinette stitch: 13 sts and 18 rows

Gauge may vary according to individual knitting style. Change needle size if necessary to achieve gauge. Alternatively, rework pattern with your own gauge measurements.

Knitting Tips

※Entire garment worked with 3 strands of yarn held together (1 strand of Yuyake no Sora and 2 strands of Chelsea).

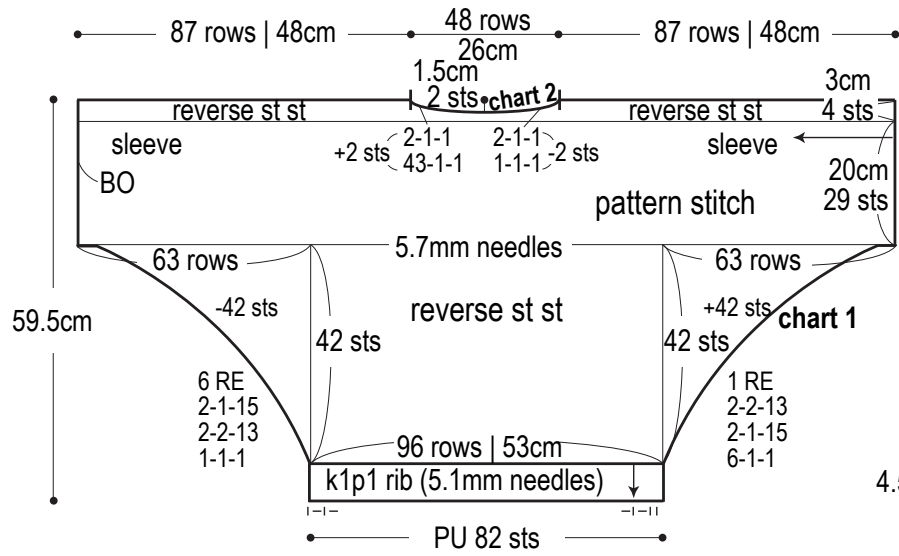
Back & front body: Cast on with long-tail cast-on method, and work in pattern stitch and reverse stockinette stitch. Work back body from right cuff sideways, increasing for lower right sleeve. Decrease to shape lower left sleeve. Work front body in the same manner, but working sideways from left cuff to right cuff. Pick up stitches along hem and work k1p1 ribbing. Bind off in pattern.

Finishing: Seam shoulders and sides with mattress stitch. Pick up stitches around cuffs and neckline, respectively. Work cuff and collar in k1p1 ribbing in the round. Bind off as for hem.

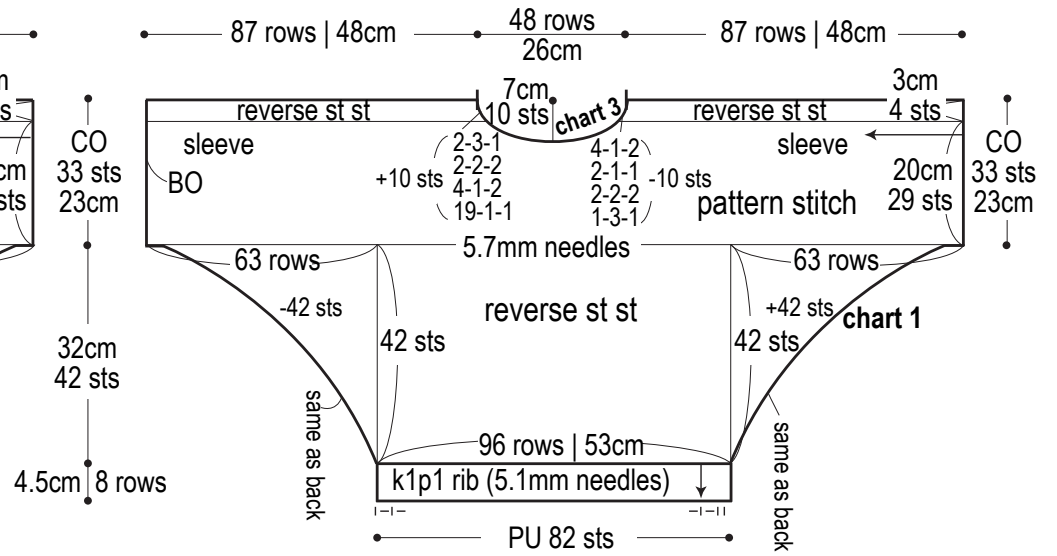
Abbreviations:

BO = bind off CO = cast on PU = pick up RE = row(s) even st st = stockinette stitch #-#-# = rows-stitches-times

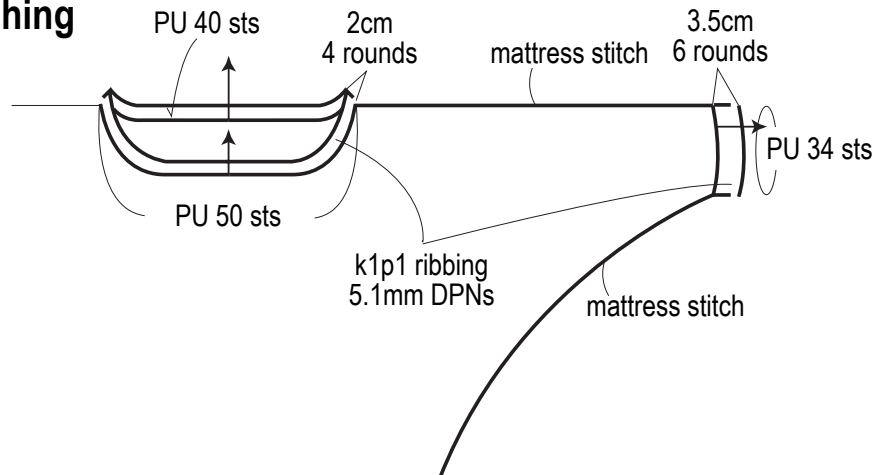
Back



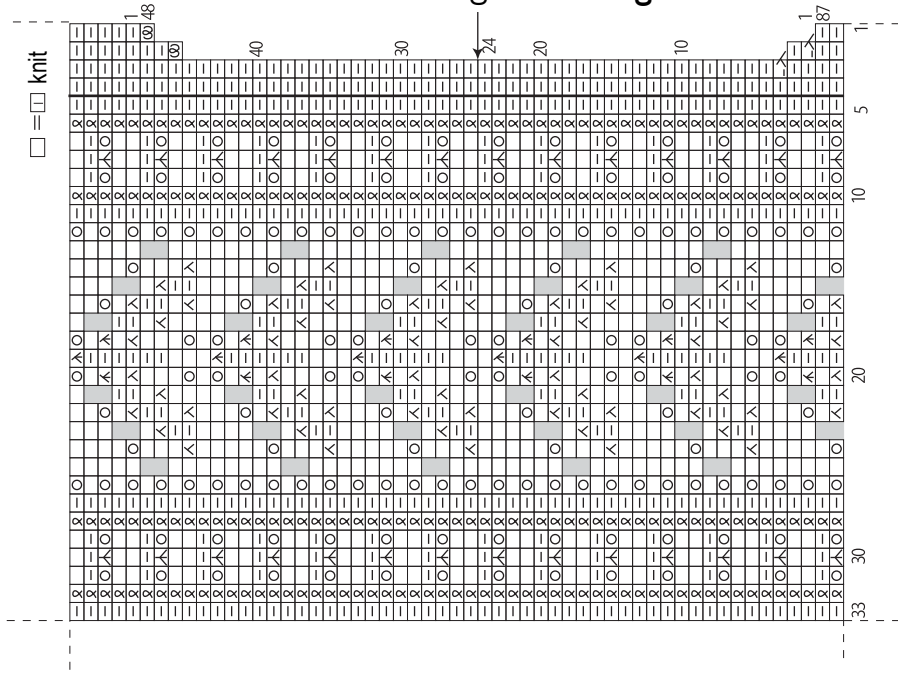
Front



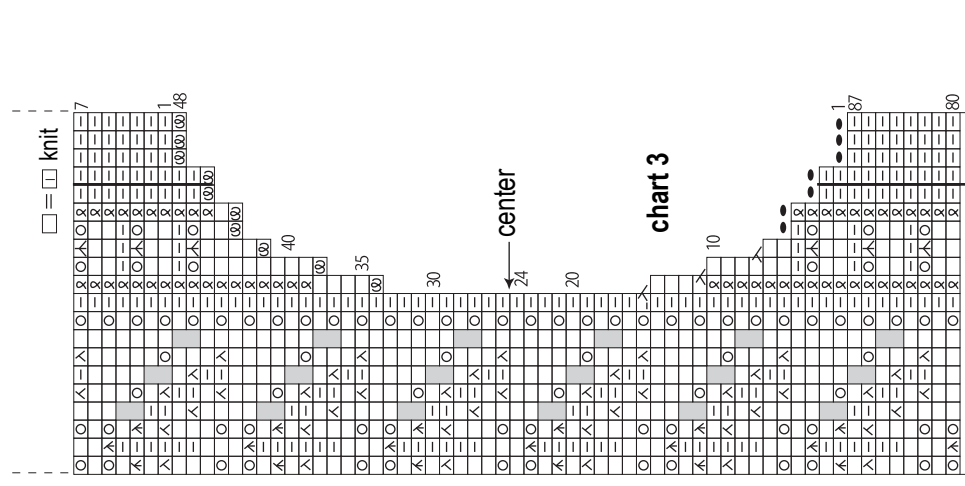
Finishing



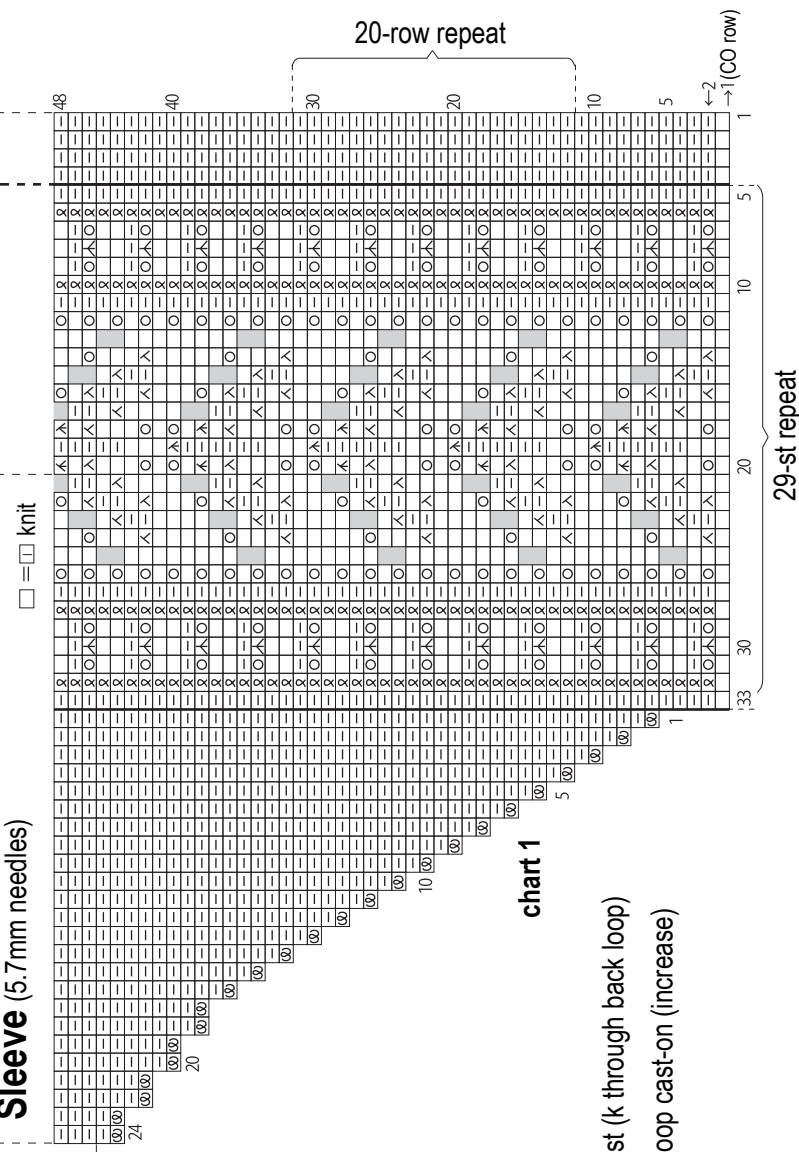
Back collar (5.7mm needles)



Front collar (5.7mm needles)



Sleeve (5.7mm needles)



X = twisted knit st (k through back loop)

W = backwards loop cast-on (increase)

□ = no stitch