

212fw-12 Girly Style Aran Sweater



Suggested yarn:

- Pierrot Yarns Carino [80% merino wool, 20% nylon; 120 yds/110m per 1.76 oz./50g skein]; color #44 orange, 7 skeins [350g]

Tools/Notions:

- 5.1mm (approx. US 8) and 5.7mm (approx. US 9) straight knitting needles or sizes necessary to achieve gauge
- 5.1mm (approx. US 8) double-pointed knitting needles or size necessary to achieve gauge

Finished measurements:

- bust 92cm/36.22"
- cross back width 35cm/13.78"
- length 59.5cm/23.43"
- sleeve length 55cm/21.65"

Gauge (10cm/4" square):

- stockinette stitch and pattern stitch: 17 sts and 22 rows
- seed stitch: 17 sts and 24 rows

Gauge may vary according to individual knitting style. Change needle size if necessary to achieve gauge. Alternatively, rework pattern with your own gauge measurements.

Knitting Tips

Body: Cast on with long-tail cast-on method. Work in seed stitch. Continue in pattern stitch and stockinette stitch. Shape waist by decreasing at edges, and then by increasing at edges. Shape armscye and neckline by binding off stitches as indicated and by decreasing at the edges.

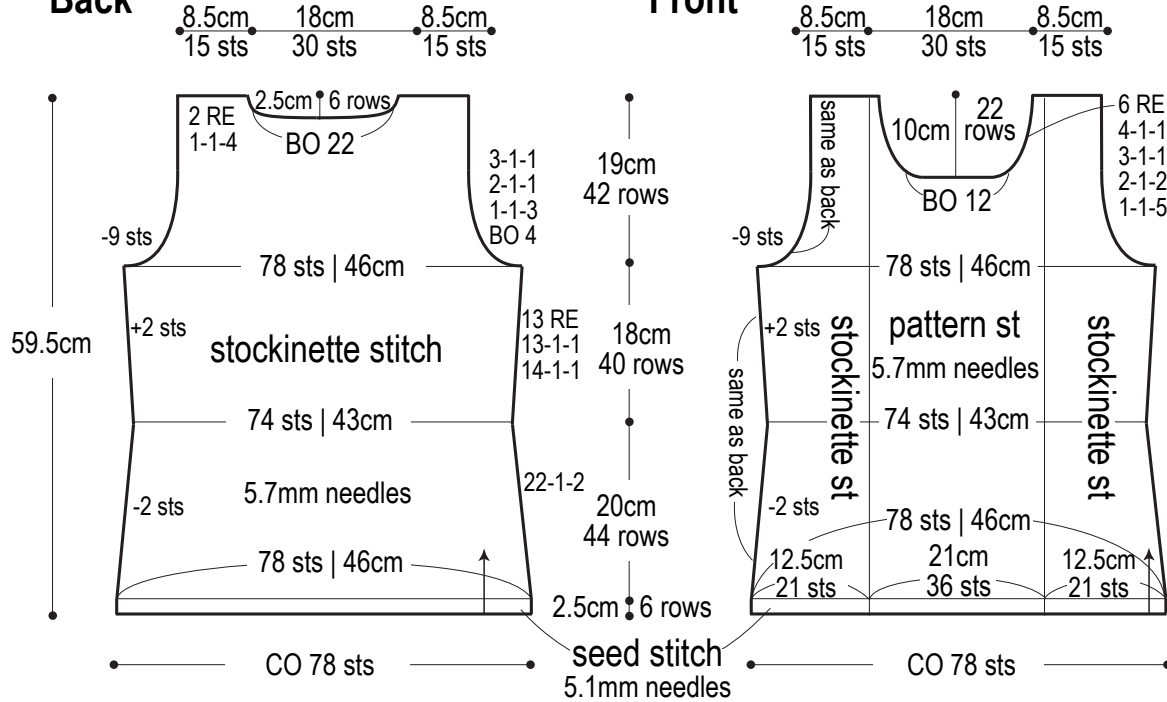
Sleeves: Cast on with long-tail cast-on method; work in same design as body. Shape sleeve edges by increasing with lifted increase. Shape sleeve cap by binding off stitches as indicated and by decreasing at the edges.

Finishing: Seam shoulders with crochet slip stitch seam. Seam sides and sleeve undersides with mattress stitch. Pick up stitches around neckline; work collar in seed stitch. Bind off in pattern. Seam sleeves to body with crochet slip stitch seam.

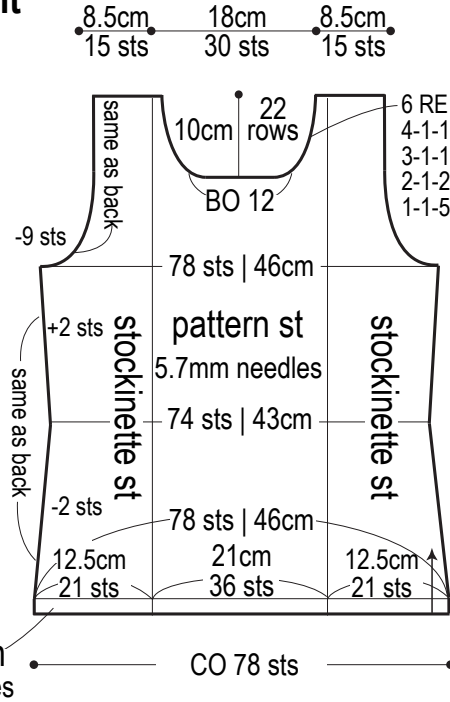
Abbreviations:

BO = bind off C2F = cable 2 front CO = cast on PU = pick up RE = row(s) even YO = yam over ### = rows-stitches-times

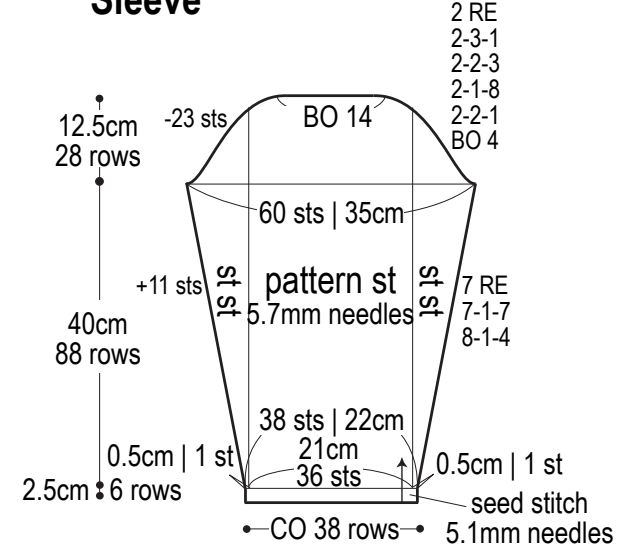
Back



Front

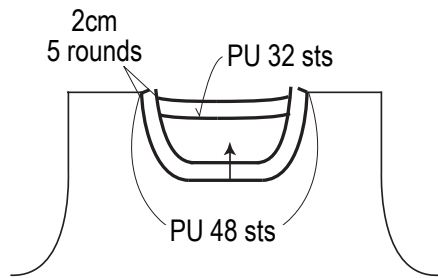


Sleeve



Collar (seed stitch)

5.1mm DPNs

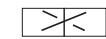


Use this QR code on your smartphone to view a video about how to work C2F.



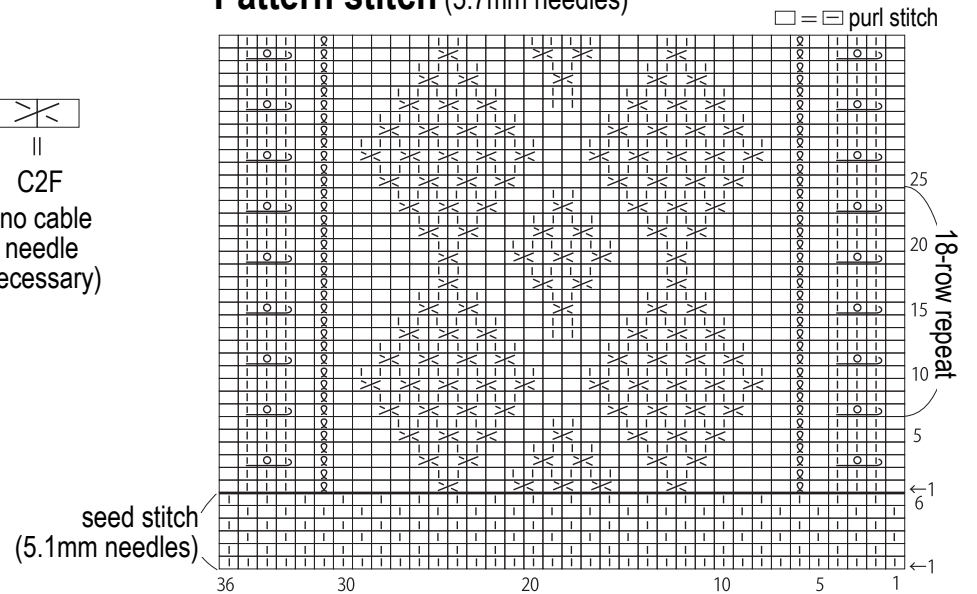
※To view on computer, search on the Pierrot Yarns website instead.

検索

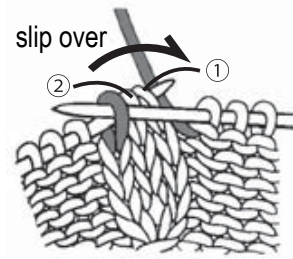


C2F
(no cable needle necessary)

Pattern stitch (5.7mm needles)



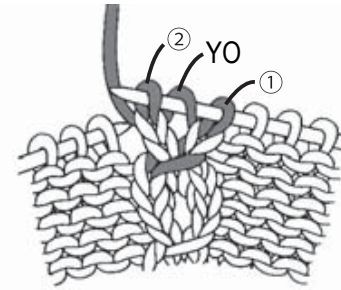
L O D Instructions



Insert R needle into third st on L needle. Slip third st over first two sts on L needle.



Knit 1 stitch, then YO.



Knit next stitch.