

21-8 Silk Rayon Sweater



Suggested yarn:

- Pierrot Yarns Silk Rayon Lace [60% silk, 40% rayon; 744 yds/680m per 3.53 oz./100g cone]; color #5207, 4 cones [340g]

Tools/Notions:

- 2.4mm (approx. US 1½), 2.7mm (approx. US 2), and 3.0mm (US 2½) straight knitting needles or sizes necessary to achieve gauge
- 2.4mm (approx. US 1½), 2.7mm (approx. US 2), and 3.0mm (US 2½) circular knitting needles or sizes necessary to achieve gauge

Finished measurements:

- bust 90cm/35.43"
- cross back width 35cm/13.78"
- length 57cm/22.44"
- sleeve length 27cm/10.63"

Gauge (10cm/4" square):

- pattern stitch: 31 sts and 33 rows

Gauge may vary according to individual knitting style. Change needle size if necessary to achieve gauge. Alternatively, rework pattern with your own gauge measurements.

Knitting Tips

※Entire garment worked with 2 strands of yarn held together.

Body: Cast on with crochet provisional cast-on method. Work in pattern stitch A. Alter gauge as indicated by changing needle size. Pick up live stitches from provisional cast-on edge; work hem in pattern stitch B. Bind off in pattern.

Sleeves: Cast on as for body. Shape sleeve edges by increasing with lifted increases each side. Shape sleeve caps by binding off stitches as indicated and by decreasing at each edge. Work cuff edging the same as the hem.

Finishing: Seam shoulders with three-needle bind-off. Seam sides and sleeve undersides with mattress stitch. Pick up stitches around neckline; work collar in pattern stitch B in the round. Bind off in pattern. Seam sleeves to body with crochet slip stitch seam.

Abbreviations:

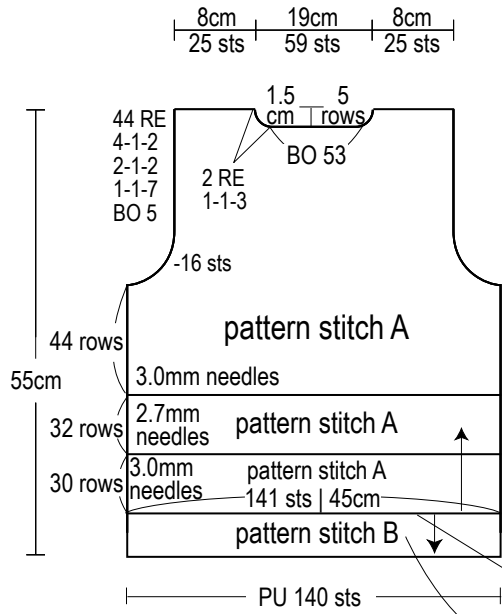
BO = bind off

PU = pick up

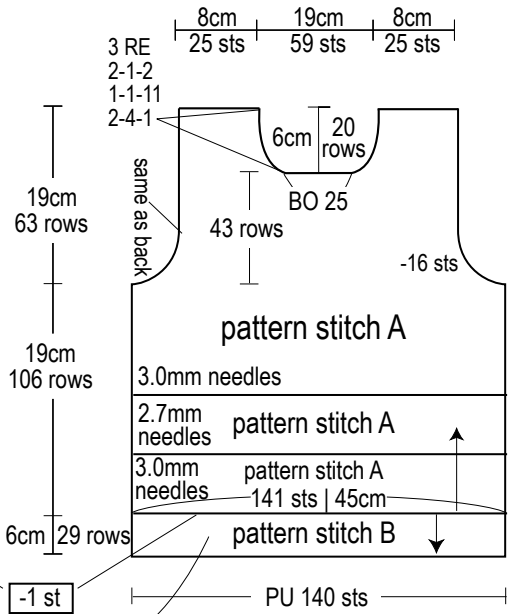
RE = row(s) even

= rows-stitches-times

Back

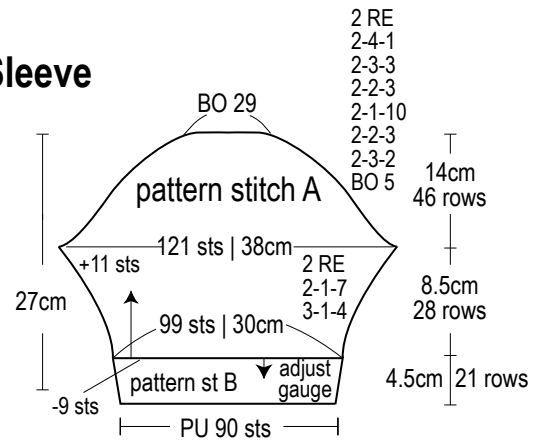


Front

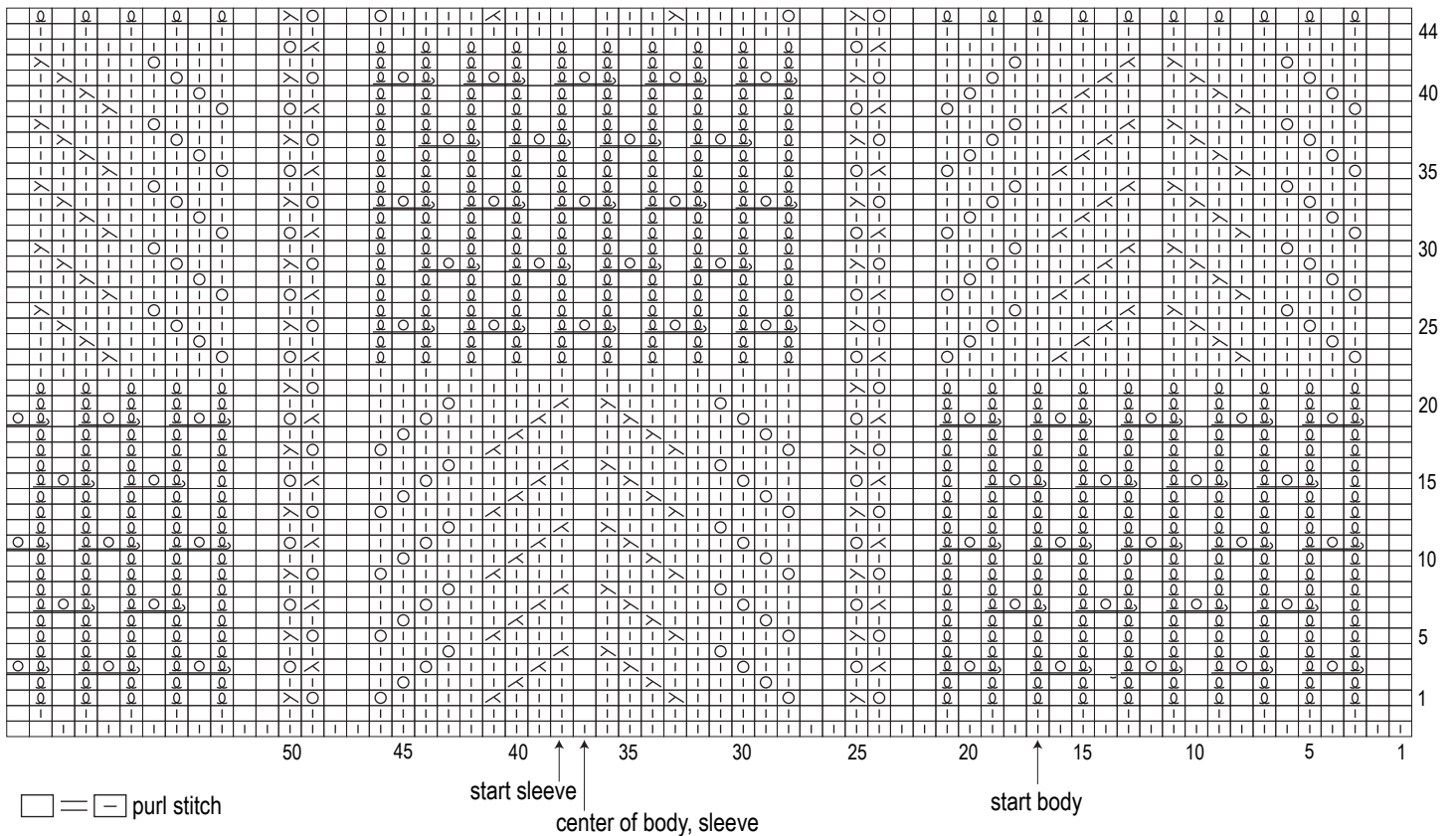


-1 st
adjust gauge

Sleeve

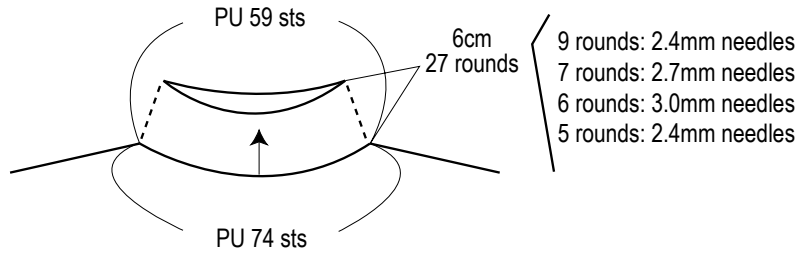


Pattern stitch A



Collar

Pattern stitch B - Adjust gauge by changing needle size.



Pattern stitch B

Collar: 27 rounds

Hem: 29 rounds
Cuffs: 21 rounds

