

# 212-651sn Silk Rosa Cowl



## Suggested yarn:

- Pierrot Yarns Silk Rosa [75% kid mohair, 25% silk; 213 yds/195m per 0.88 oz./25g skein]; color #11 dusty green, 2 skeins [50g]

## Tools/Notions:

- 3.9mm (approx. US 6) knitting needles or size necessary to achieve gauge
- 2.5mm (approx. US B) crochet hook or size necessary to achieve gauge

## Finished measurements:

- width 46cm/18.11"
- length 120cm/47.24"

## Gauge (10cm/4" square):

- pattern stitch: 18 sts and 27 rows

*Gauge may vary according to individual knitting style. Change needle size if necessary to achieve gauge. Alternatively, rework pattern with your own gauge measurements.*

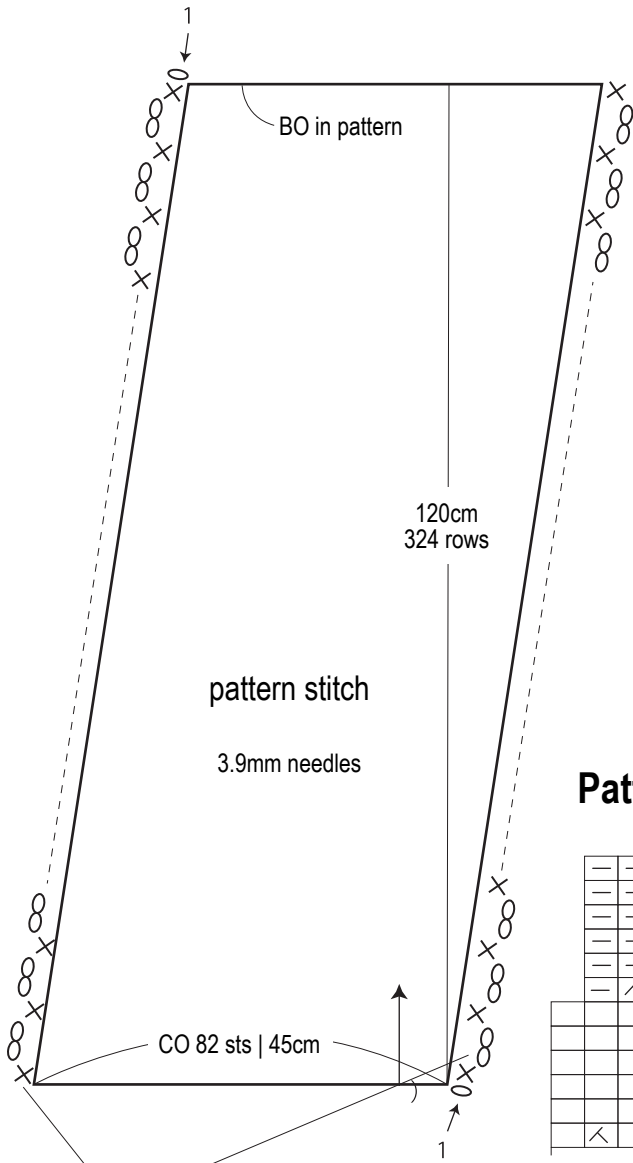
## Knitting Tips

Cast on with long-tail cast-on method. Work in alternating pattern as follows: 6 rows of stockinette stitch, 6 rows of reverse stockinette stitch. Create diagonal shaping at sides by working YO at right edge and k2tog at left edge every time the pattern stitch alternates. Crochet edging along both long sides. With right sides facing each other, seam cast-on edge and bind-off edge together with crochet slip stitch seam.

## Abbreviations:

BO = bind off  
CO = cast on

# Cowl



edging:  
2.5mm hook  
0.5cm  
1 round

※Space edging evenly  
across every side.

## Pattern stitch (3.9mm needles)

