

26-9 Pullover



Suggested yarn:

- Pierrot Yarns Super Kid Mohair [75% kid mohair, 25% nylon; 306 yds/280m per 0.88 oz./25g skein]; -- *discontinued; please choose appropriate substitute*
 - color #5801 off-white, 3 skeins [70g]
 - color #5804 citron green, 3 skeins [70g]
- *suggested substitute:* Pierrot Yarns Cutie Mohair [30% nylon, 28% kid mohair, 28% acrylic, 14% wool; 339 yds/310m per 0.88 oz./25g skein];
 - color #21 ivory, 3 skeins [70g]
 - color #32 light lime yellow, 3 skeins [70g]

Tools/Notions:

- 3.3mm (approx. US 3) knitting needles or size necessary to achieve gauge
- 2.5mm (approx. US B or C) crochet hook or size necessary to achieve gauge

Finished measurements:

- bust 92cm/36.22"
- cross back width 37cm/14.57"
- length 57cm/22.44"
- sleeve length 52cm/20.47"

Gauge (10cm/4" square):

- pattern stitch A: 23 sts and 32 rows
- pattern stitch B: 23 sts and 30 rows

Gauge may vary according to individual knitting style. Change needle size if necessary to achieve gauge. Alternatively, rework pattern with your own gauge measurements.

Knitting Tips

※Entire garment worked with 2 strands of yarn held together (1 strand of color #5801 off-white and 1 strand of color #5804 citron green).

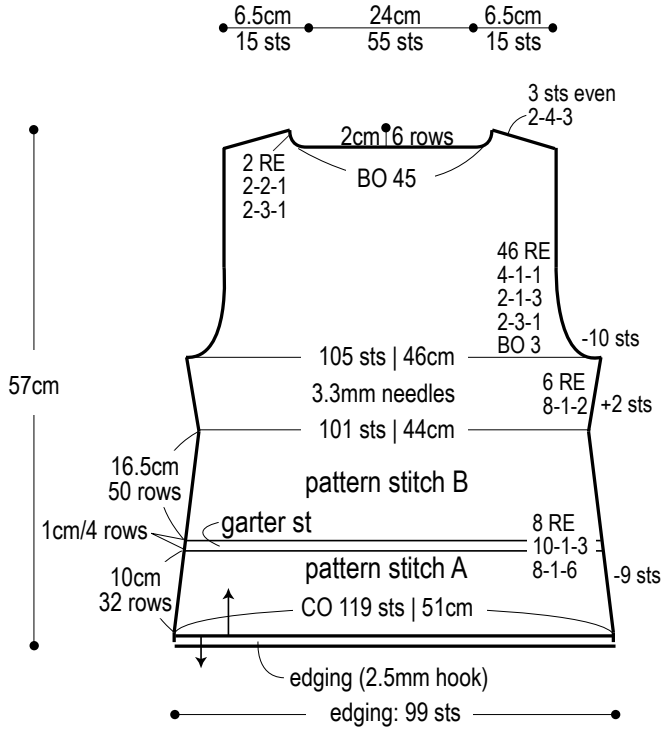
Body & sleeves: Cast on with long-tail cast-on method. Work 32 rows in pattern stitch A, then work 4 rows of garter stitch, then continue in pattern stitch B. For front, begin working right and left sides separately starting from the seventh row after the start of armscye shaping. Shape waist, armscye, and neckline by binding off stitches where indicated and by working fully fashioned decreases (worked 1 stitch in from the edge). When increasing for waist shaping and sleeves, using backwards loop cast-on.

Finishing: Seam shoulders with three-needle bind-off. Seam sides and sleeve undersides with mattress stitch. Work 2 rounds of edging in the round around hem and cuff. Seam sleeves to body with slip stitch.

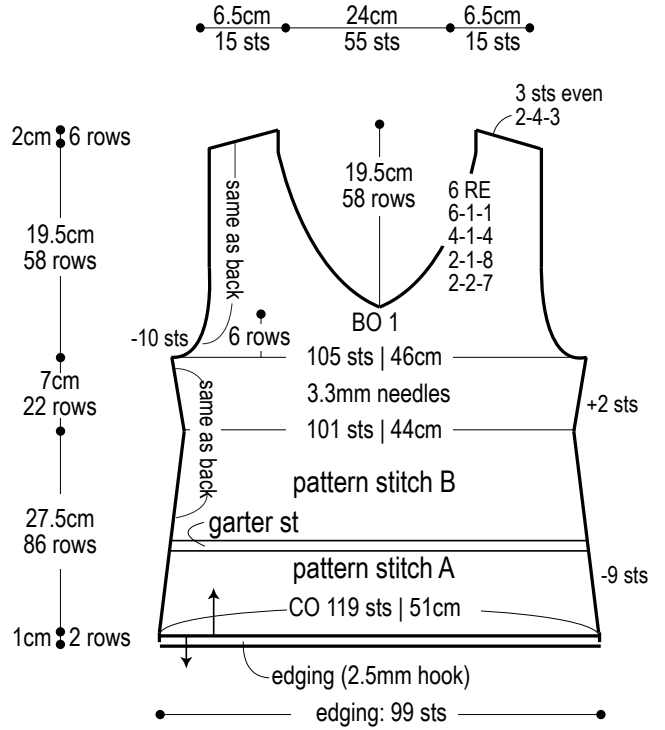
Abbreviations:

BO = bind off
CO = cast on
RE = row(s) even
#-#-# = rows-stitches-times

Back

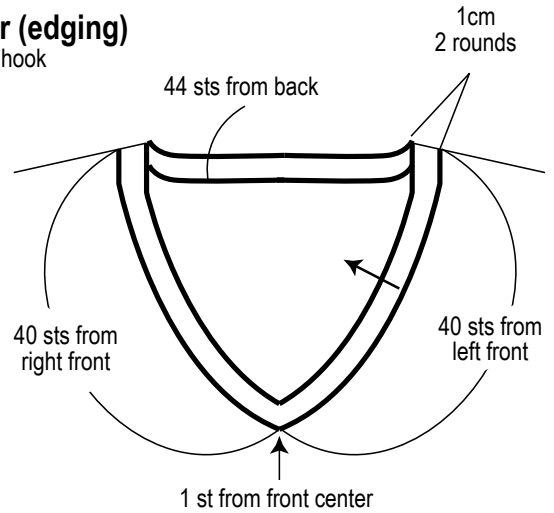


Front

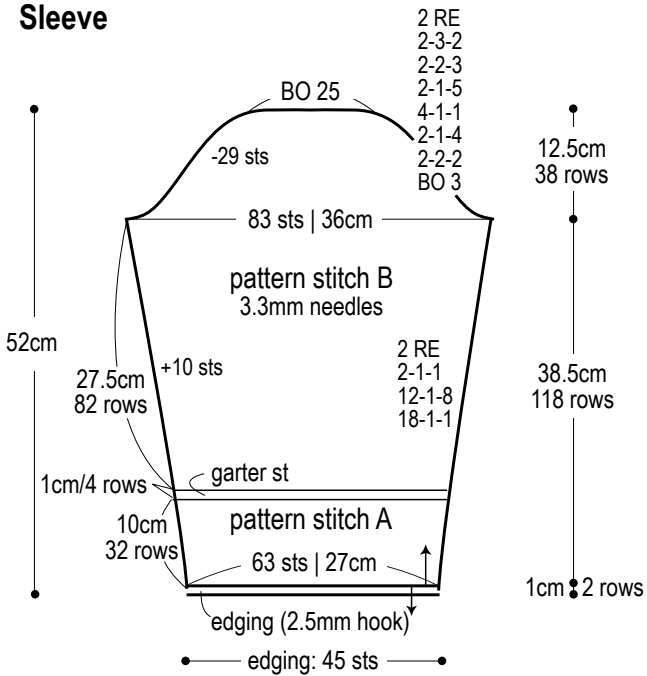


Collar (edging)

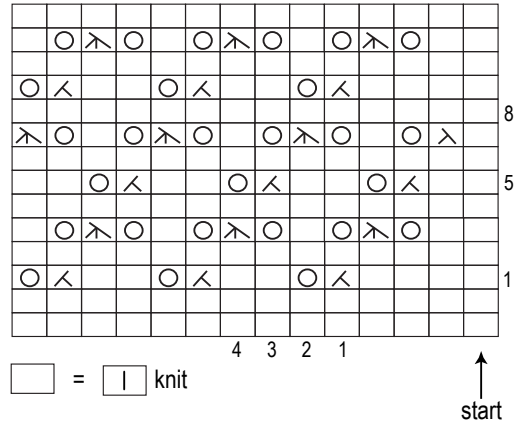
2.5mm hook



Sleeve



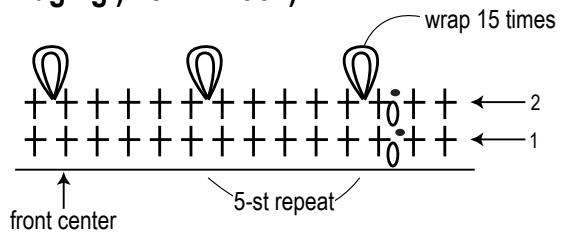
Pattern stitch A



Edging (2.5mm hook)



= Wrap yarn 15 times around hook. Lay yarn across hook once more, and draw hook through all loops on hook.



Pattern stitch B

