

212ss-12 Airy Sweater



Suggested yarn:

- Pierrot Yarns Cutie Mohair [30% nylon, 28% mohair, 28% acrylic, 14% wool; 339 yds/310m per 0.88 oz./25g skein]; color #42 smoke lime pink, 12 skeins [300g]

Tools/Notions:

- 4.2mm (approx. US 6) straight knitting *and* double-pointed needles or size necessary to achieve gauge
- 3.5mm (US E) crochet hook or size necessary to achieve gauge
- small amount polyfiber stuffing
- 1 safety pin

Finished measurements:

- bust 120cm/47.24"
- center back neck-to-cuff 62cm/24.41"
- length 70cm/27.56"

Gauge (10cm/4" square):

- pattern stitch A: 19.5 sts and 28 rows
- pattern stitch B: 18.5 sts and 28 rows
- stockinette stitch: 18 sts and 28 rows

Gauge may vary according to individual knitting style. Change needle size if necessary to achieve gauge. Alternatively, rework pattern with your own gauge measurements.

Knitting Tips

※Entire garment worked with 3 strands of yarn held together.

Front and back body: Cast on with long-tail cast-on method, and work 4 rows in reverse st st. Referring to schematic, continue pattern stitch B, then pattern stitch A and st st.

Sleeve: As for body, cast on with long-tail cast-on method, and work 4 rows in reverse st st. Referring to schematic, continue pattern stitch B, then pattern stitch A and st st.

Finishing: Seam sides with mattress stitch. Seam sleeves to body with back stitch.

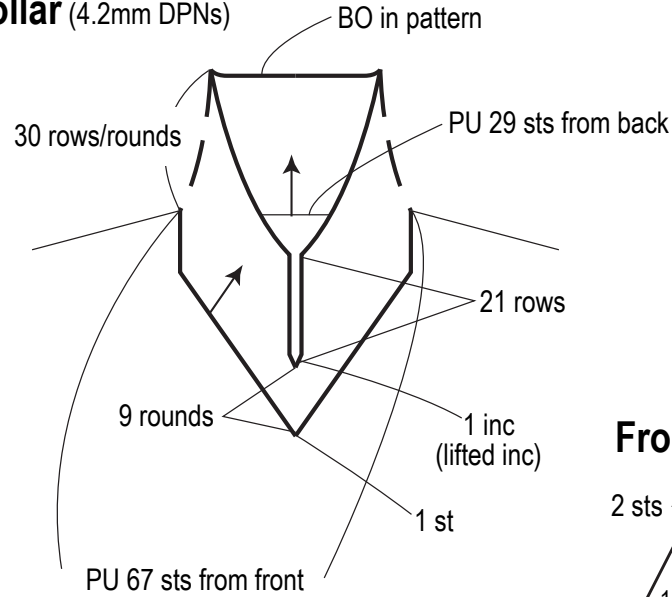
Collar: Pick up stitches from front and back neckline. Work 9 rounds. On row 10, work 1 lifted increase on each side of center stitch; work the rest of the collar back and forth in rows. Bind off in pattern.

Abbreviations:

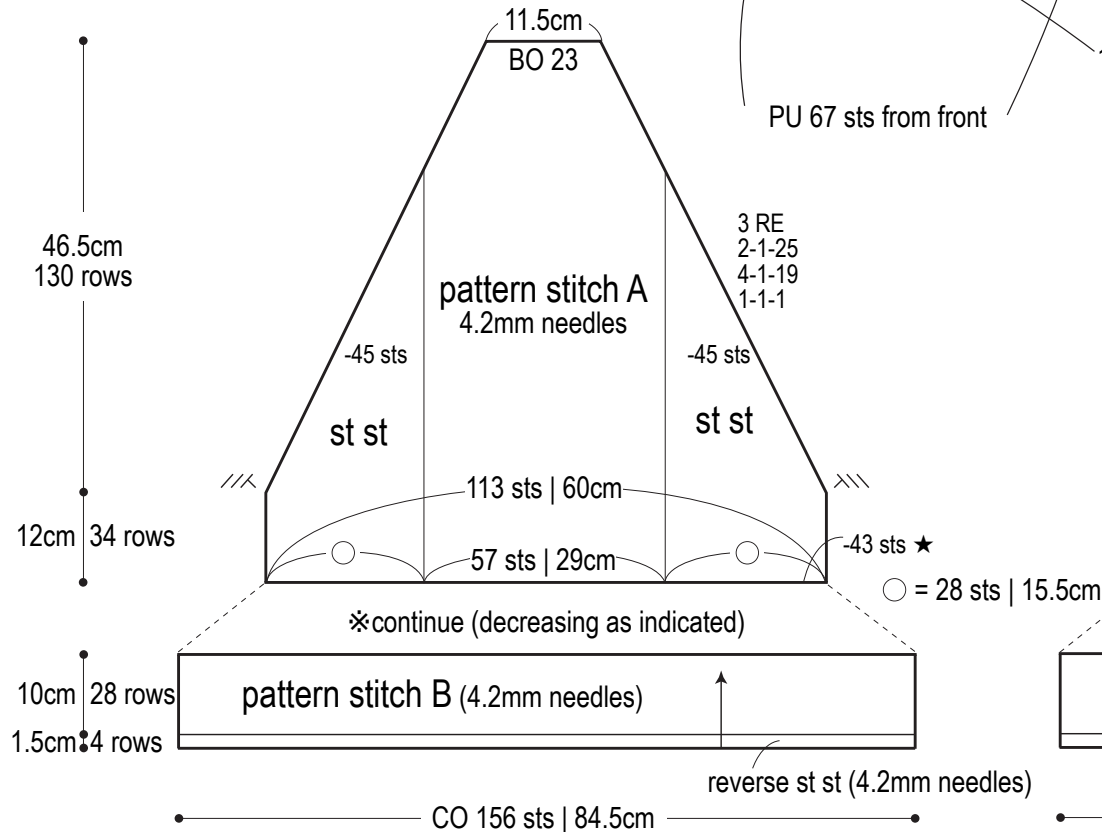
BO = bind off
CO = cast on
inc = increase
PU = pick up

RE = row(s) even
st st = stockinette stitch
#-#-# = rows-stitches-times

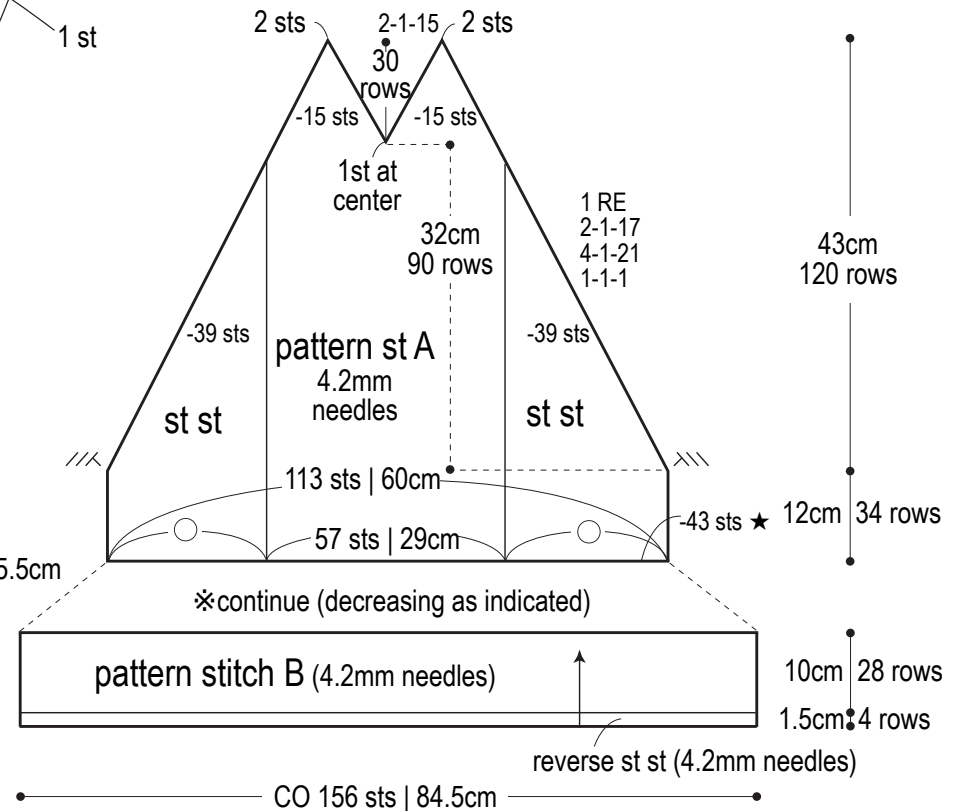
Collar (4.2mm DPNs)



Back

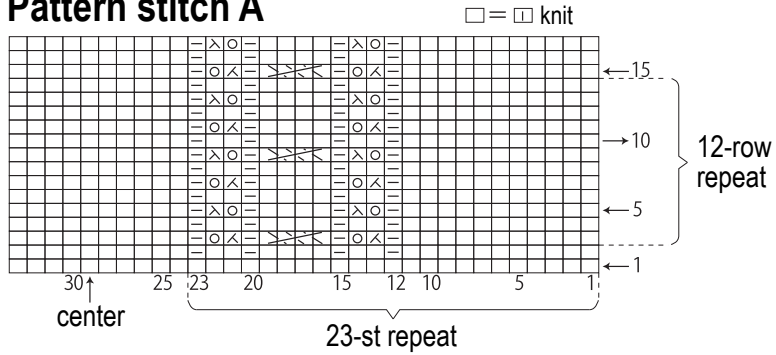


Front

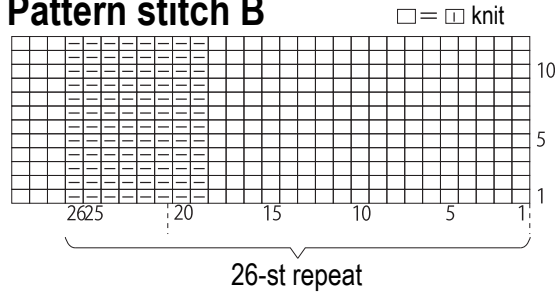


※Where marked with ★, decrease 43 sts evenly across (using k2tog and ssk).

Pattern stitch A



Pattern stitch B



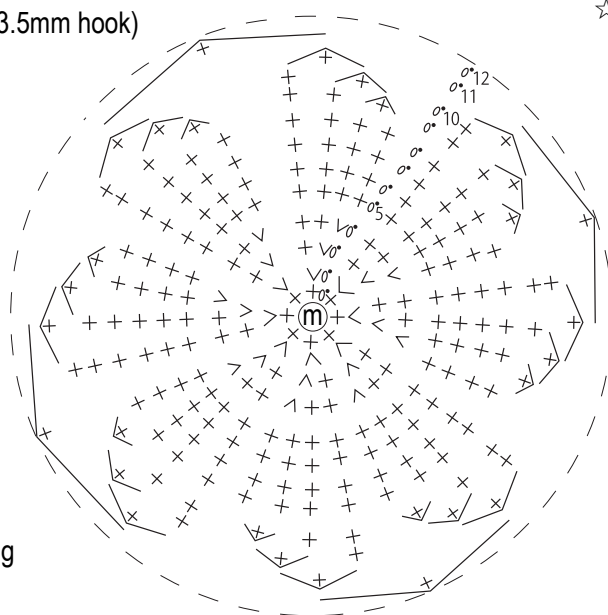
Pompom (3.5mm hook)

round #	stitch count
12	4 (-4 sts)
11	8 (-8 sts)
10	16 (-8 sts)
9	24 (-8 sts)
8	32
7	32
5	32
4	32 (+8 sts)
3	24 (+8 sts)
2	16 (+8 sts)
1	8 (work into magic ring)

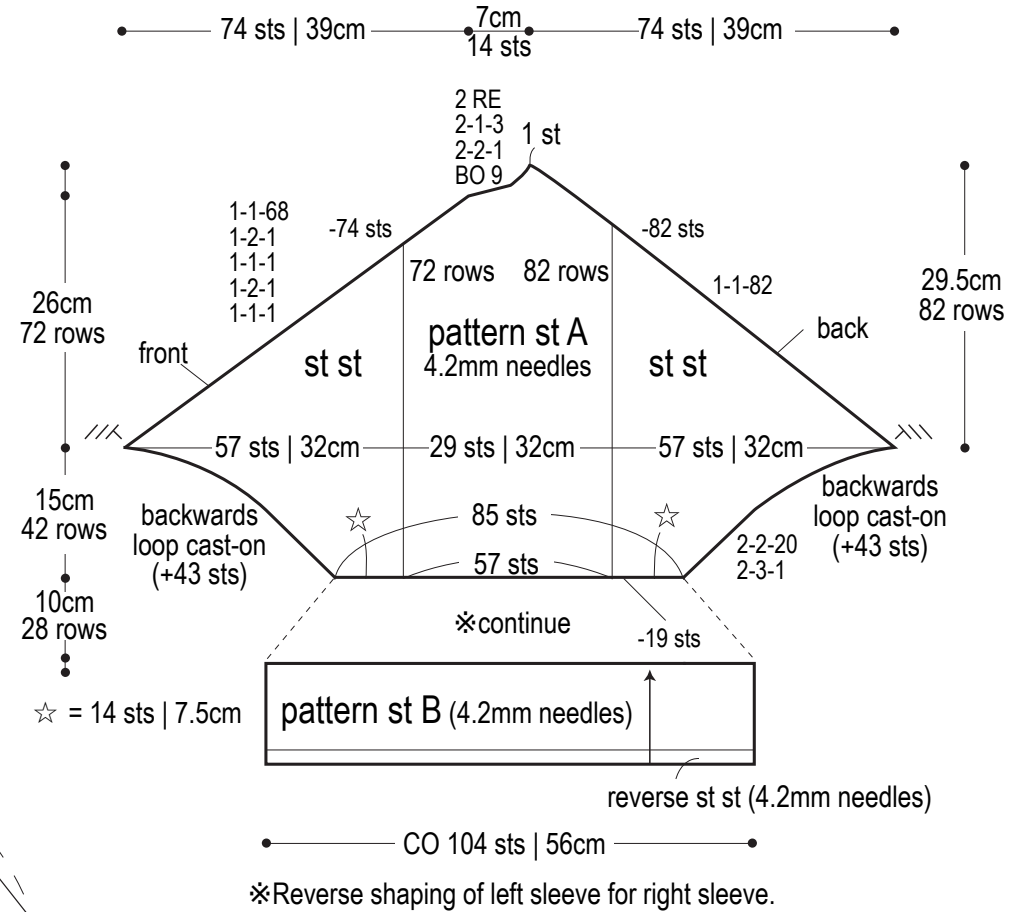
single crochet (US)

work even

m = magic ring



Sleeve



Pompom finishing (3.5mm hook)

