

211w-08 Aspen Scarf



Suggested yarn:

- Botto Poala Aspen 3 [100% cashmere; 107 yds/98m per 0.88 oz./25g skein];
 - color #01 off-white, 3 skeins [75g]
 - color #11 red, 3 skeins [55g]
 - color #15 navy, 1 skein [15g]

Tools/Notions:

- 3.0mm (US 2½) and 3.3mm (approx. US 3) knitting needles or sizes necessary to achieve gauge

Finished measurements:

- width 16cm/6.30"
- length 126cm/49.61"

Gauge (10cm/4" square):

- pattern stitch A, B, C: 26 sts and 29 rows
- stockinette stitch: 26 sts and 29 rows

Gauge may vary according to individual knitting style. Change needle size if necessary to achieve gauge. Alternatively, rework pattern with your own gauge measurements.

Knitting Tips

Body part A: Cast on with long-tail cast-on method. Work in k1p1 ribbing, then continue in stranded pattern stitches A, B, and C followed by k1p1 ribbing.

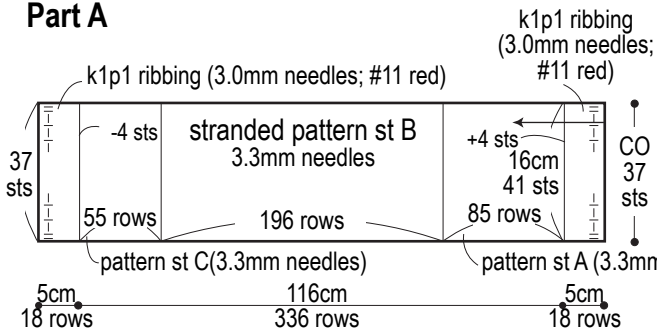
Body part B: Using color #1 off-white, cast on with long-tail cast-on method. Work in k1p1 ribbing, then continue in stockinette stitch followed by k1p1 ribbing.

Finishing: With wrong sides facing each other, seam parts A and B together at the sides using mattress stitch. Seam cast-on and cast-off edges with woven seam.

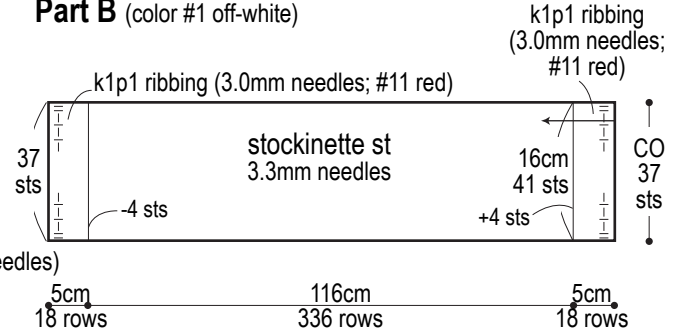
Abbreviations:

CO = cast on

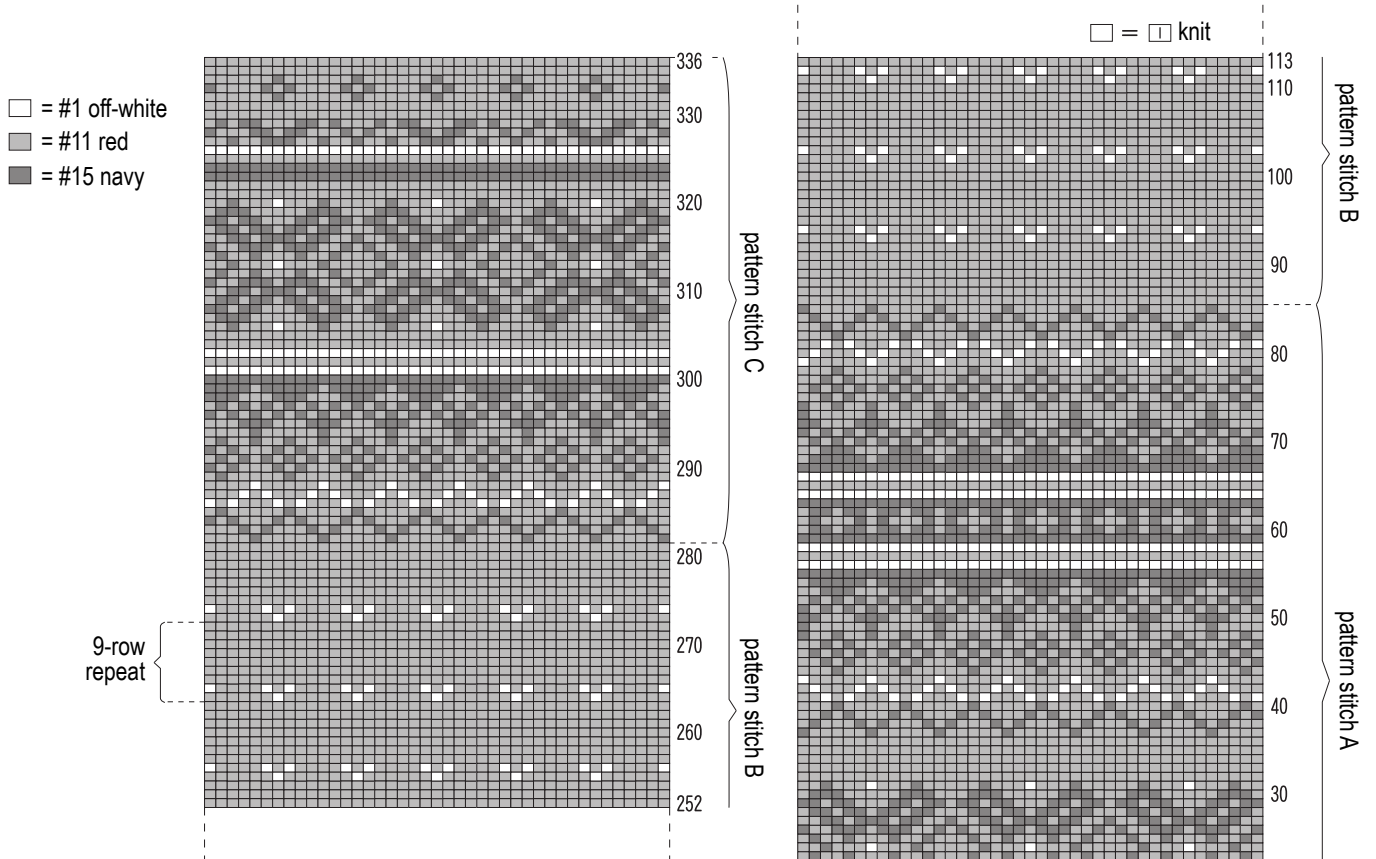
Part A



Part B (color #1 off-white)



Stranded pattern stitch (3.3mm needles)



Finishing

