

27-28-11 Sleeveless Cabled Sweater & Armwarmers



Suggested yarn:

- Pierrot Yarns Air Soft [45% acrylic, 40% wool, 15% nylon; 44 yds/40m per 1.41 oz./40g skein]; color #25 heliotrope, 9 skeins [360g]

Tools/Notions:

- 6.0mm (US 10) and 6.6mm (approx. US 10½) straight knitting needles or sizes necessary to achieve gauge
- 6.0mm (US 10) circular or double-pointed knitting needles or size necessary to achieve gauge
- cable needle

Finished measurements:

- bust 92cm/36.22"
- cross back width 36cm/14.17"
- sweater length 53.5cm/21.06"
- armwarmers: please see schematics

Gauge (10cm/4" square):

- stockinette stitch: 11 sts and 15 rows
- pattern stitch: 18 sts and 15 rows

Gauge may vary according to individual knitting style. Change needle size if necessary to achieve gauge. Alternatively, rework pattern with your own gauge measurements.

Knitting Tips

Body: Cast on with crochet provisional cast-on method. Work in stockinette stitch and, in center only, pattern stitch. Shape waist with decreases (k2tog or ssk) and lifted increases. Shape armscye and neckline by binding off stitches and decreasing (k2tog or ssk) as indicated. Shape shoulders with short rows. Pick up live stitches from provisional cast-on. Decreasing in center pattern stitch panel, work k1p1 ribbing. Bind off with 1x1 tubular bind-off method.

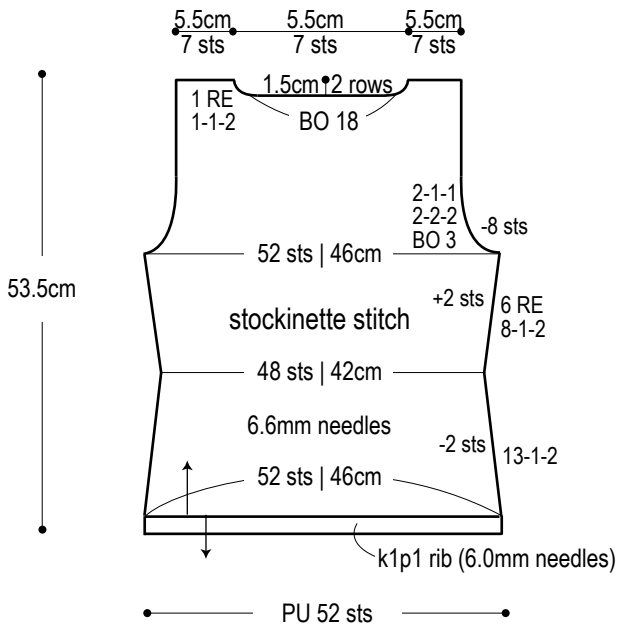
Sweater finishing: Seam shoulders with three-needle bind-off. Seam sides with mattress stitch. Work k1p1 ribbing in the round at neckline and sleeves. Bind off with 1x1 tubular bind-off method.

Armwarmers: Cast on with long-tail cast-on method and knit according to schematics. Place markers to indicate where thumbholes will be. Work k1p1 ribbing, then bind off with 1x1 tubular bind-off method. Seam with mattress stitch, except for where thumbhole should be.

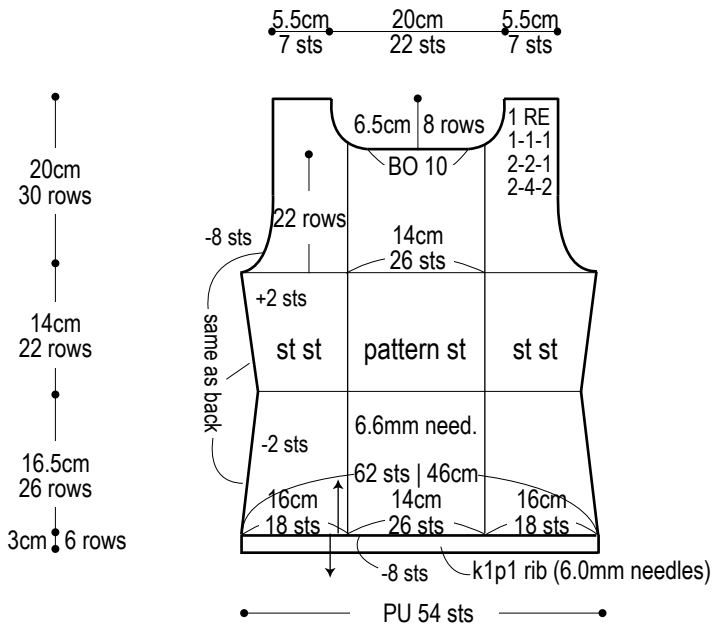
Abbreviations:

BO = bind off
CO = cast on
PU = pick up
RE = row(s) even
= rows-stitches-times

Back

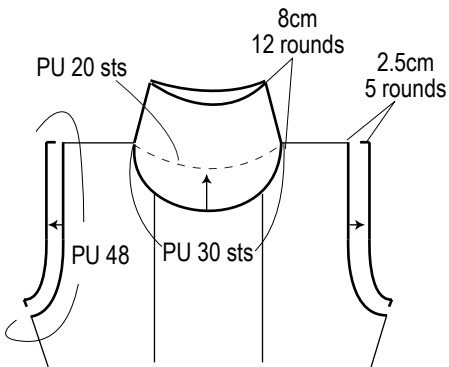


Front

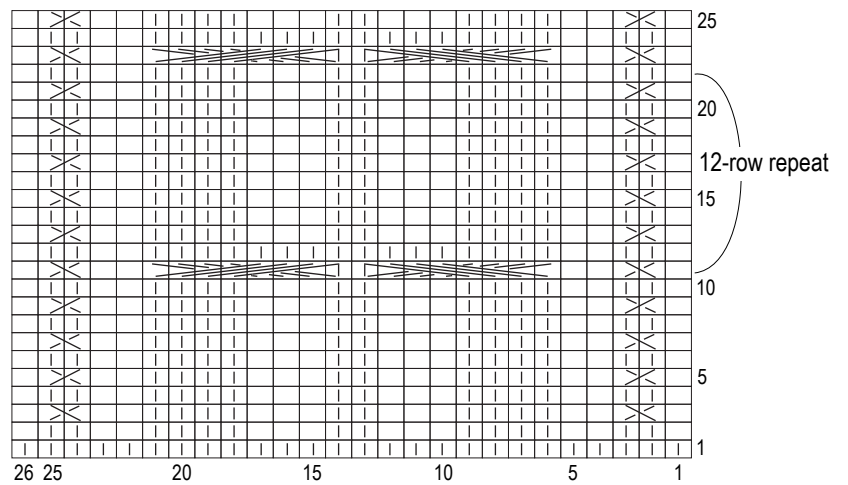


Collar & cuffs

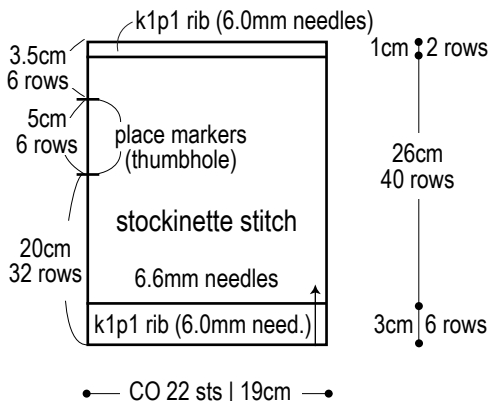
k1p1 ribbing; 6.0mm needles



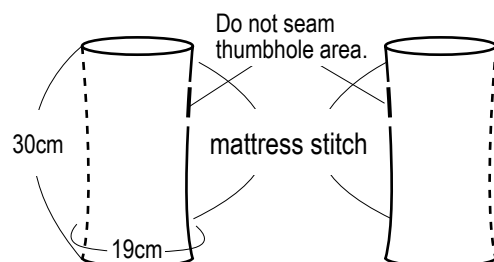
Pattern stitch



Armwarmers



Armwarmer finishing



*Make 2, reversing thumbhole for left hand.