

26-27-10 Pullover & Scarf



Suggested yarn:

- Pierrot Yarns Reverse Wool [100% wool; 104 yds/95m per 1.76 oz./50g skein] - *discontinued; please choose appropriate substitute*
 - pullover: color #4 tan, 9 skeins [420g]
 - scarf: color #4 tan, 4 skeins [200g]

Tools/Notions:

- 4.2 (approx. US 6) and 4.5mm (US 7) straight knitting needles or sizes necessary to achieve gauge
- 4.2mm (approx. US 6) circular or double-pointed knitting needles or size necessary to achieve gauge
- cable needle

Finished measurements:

- bust 90cm/35.43"
- cross back width 36cm/14.17"
- pullover length 57cm/22.44"
- sleeve length 55cm/21.65"
- scarf length 176cm/69.29"
- scarf width 18cm/7.09"

Gauge (10cm/4" square):

- stockinette stitch: 18 sts and 26 rows
- pattern stitch: 26 sts and 26 rows

Gauge may vary according to individual knitting style. Change needle size if necessary to achieve gauge. Alternatively, rework pattern with your own gauge measurements.

Knitting Tips

Body: Cast on with long-tail cast-on method. Work 20 rows of k3p2 ribbing and pattern stitch as shown in schematic. Starting from next row (row 21), change ribbing section to stockinette stitch. Shape armhole by binding off stitches as indicated and by working decreases (k2tog and ssk) at edges. Place neckline stitches on stitch holder.

Sleeves: Cast on as for body. Work k3p2 ribbing followed by stockinette stitch. Increase at sides of sleeve using lifted increase. Bind off stitches at sleeve cap.

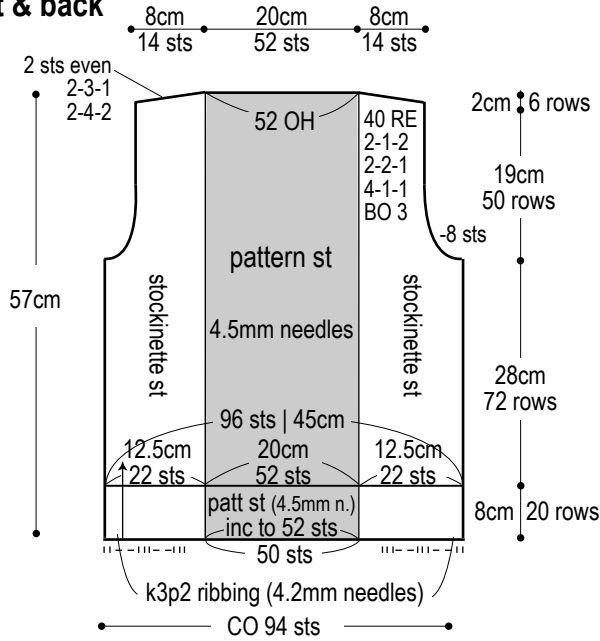
Finishing: Seam shoulders with three-needle bind-off. Seam sides and sleeve undersides with mattress stitch. Pick up stitches around neckline, starting from center front neckline. Work collar in k2p2 ribbing, then bind off in pattern. Seam sleeves to body with slip stitch.

Scarf: Cast on with long-tail cast-on method. Work in pattern stitch according to schematic. Bind off in pattern.

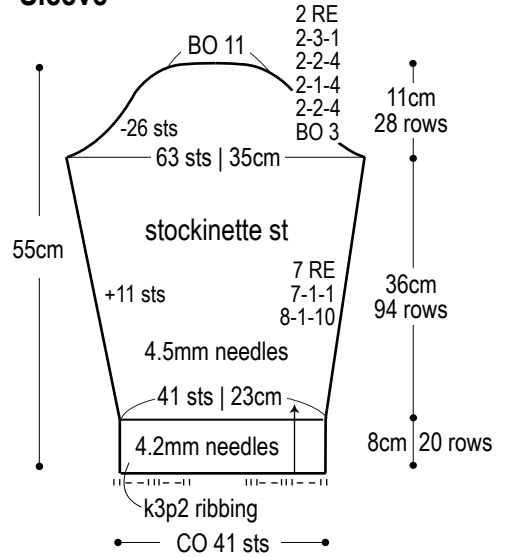
Abbreviations:

BO = bind off
CO = cast on
inc = increase
OH = on hold (i.e., place on stitch holder)
PU = pick up
RE = row(s) even
= rows-stitches-times

Front & back

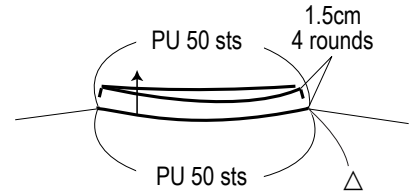


Sleeve

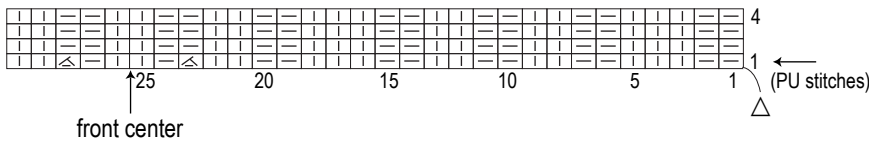


Collar

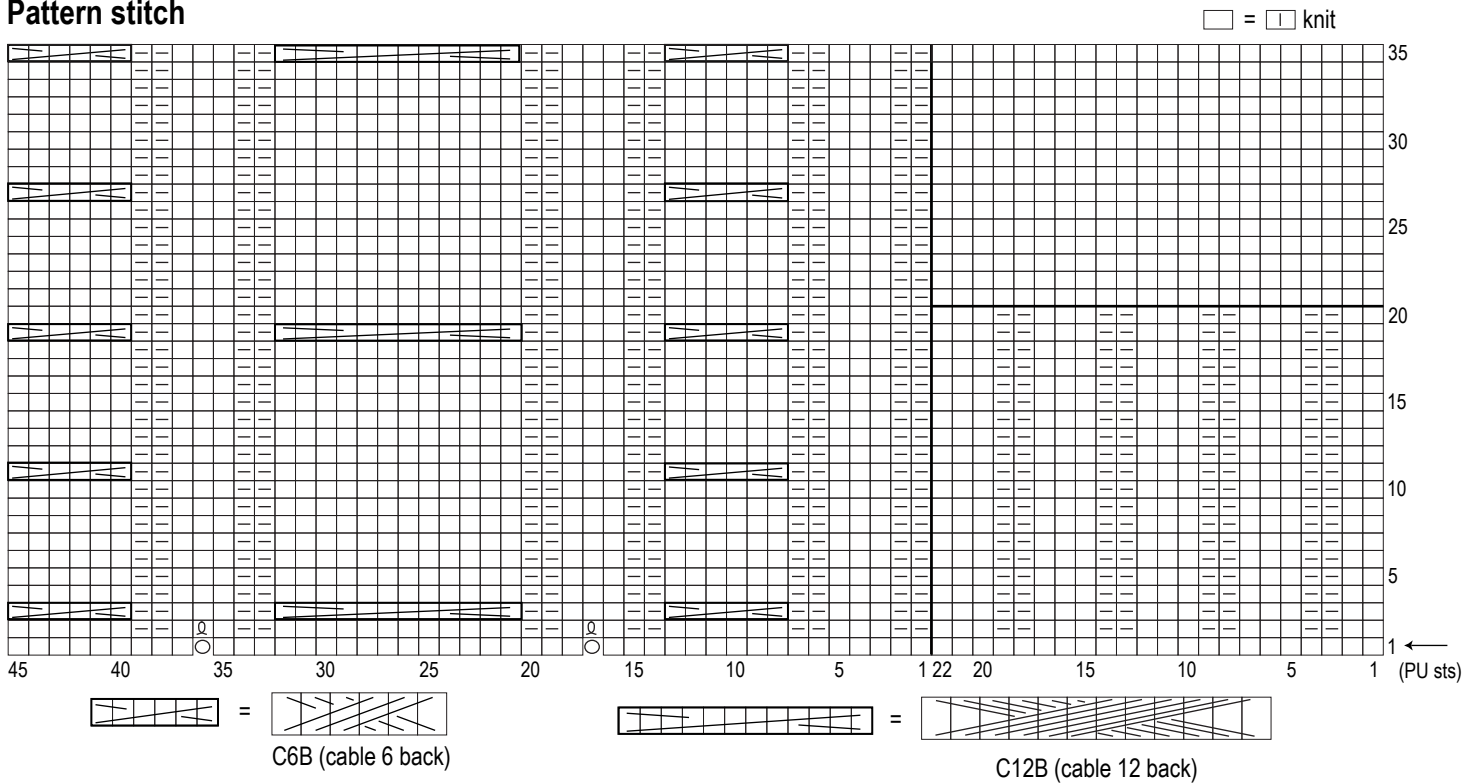
k2p2 ribbing, 4.2mm needles



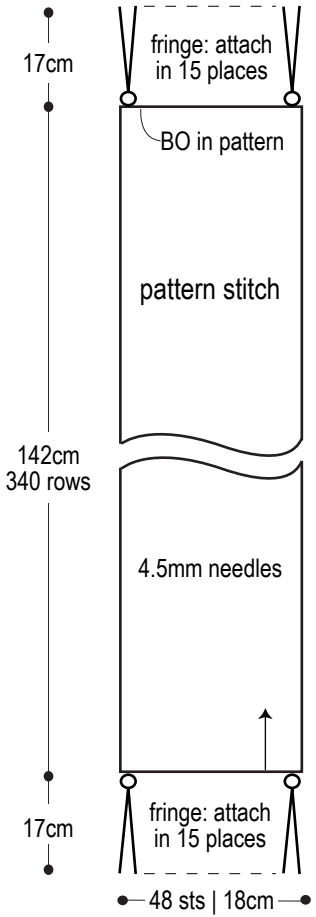
k2p2 ribbing for collar



Pattern stitch



Scarf



☆ Make fringe as follows: take 3 strands (each 37cm long) and fold in two; tie to end of scarf. Do this in 15 places on each end of scarf.

Pattern stitch (scarf)

